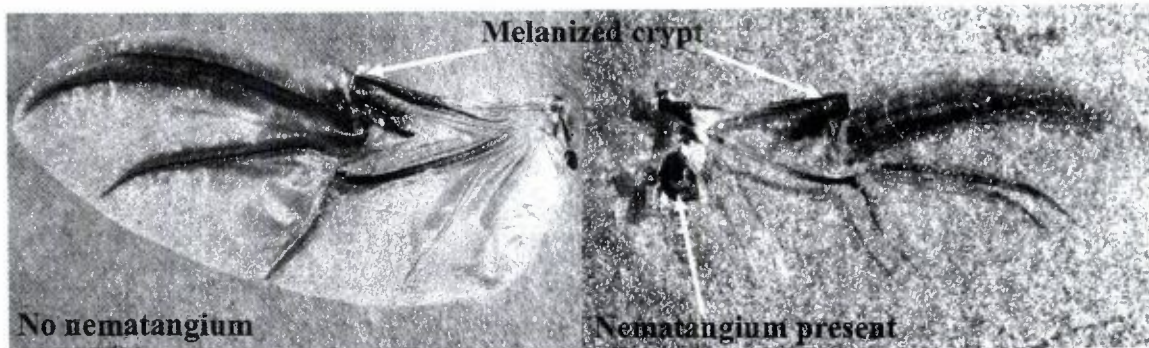


ERRATUM

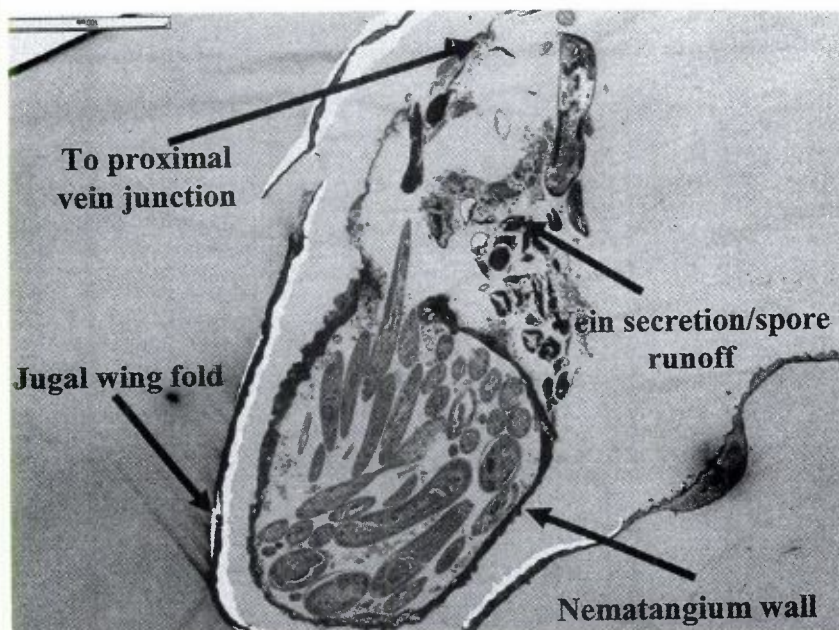
Vol. 41 (2006) pp. 71–79: **Travelling through time and space on wings of beetles: A tripartite insect-fungi-nematode association.** By Yasmin J. Cardoza, Susan Paskewitz, and Kenneth F. Raffa

The following are improved figures:

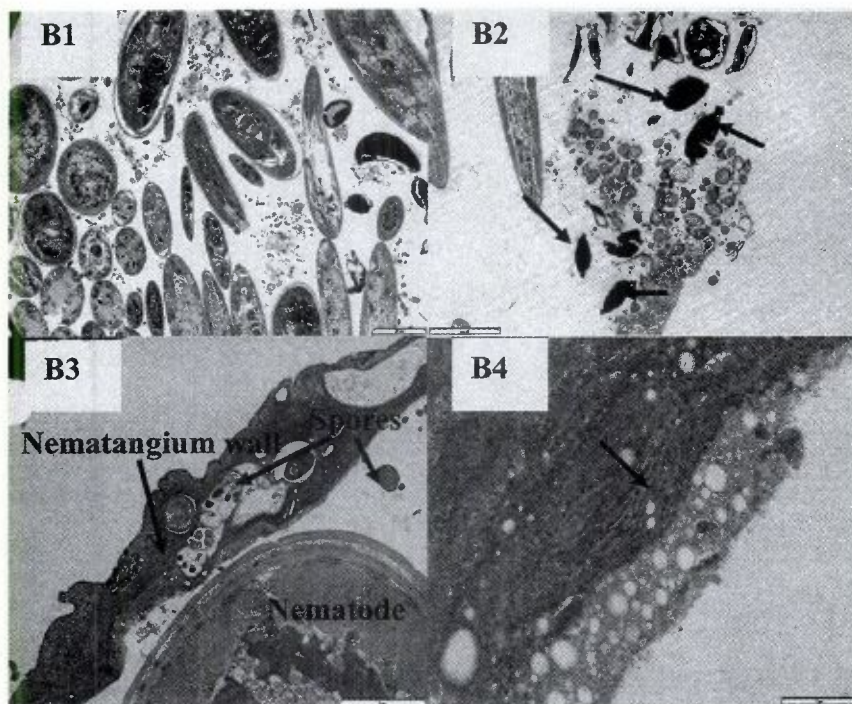


B)

Figure 2. A) Spruce beetle wings without (left) and with (right) a nematangium (10 \times , bright field); B) female *Ektaphelechus obtusus* inside a disrupted nematangium (40 \times , bright field).



A)



B)

Figure 3. Electron microscopic images of A) jugal wing fold and nematangium tissue slice, bar on upper left corner denotes $100\ \mu\text{m}$; and B) Pocket sections showing nematodes and microbial spores (B1, bar= $20\ \mu\text{m}$), microbial spores and spore-containing capsules (B2, bar= $0\ \mu\text{m}$), wall section made of granular matrix and embedded microbial spores (B3, bar= $5\ \mu\text{m}$), and wall filamentous infolding (B4, bar= $1\ \mu\text{m}$).