

## ERRATUM

Vol. 34 (2003) 145–155: A Survey of Mycobionts of Federally Threatened *Platanthera praeclara* (Orchidaceae). J. Sharma, L.W. Zettler, and J.W. Van Sambeek. The following are the improved figures of the above article:

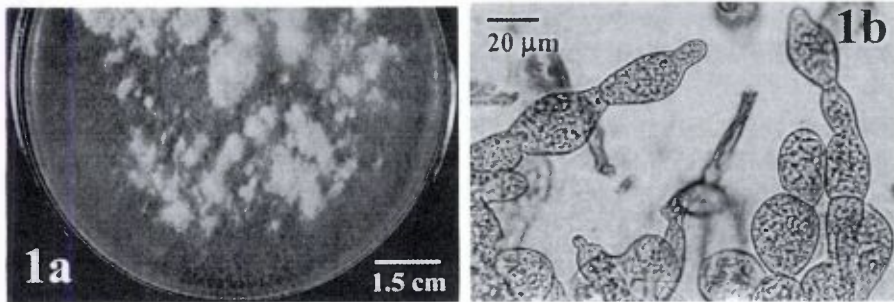


Figure 1. Blu 86 (UAMH 9848) recovered from *Platanthera praeclara*: (a) mycelium of Blu 86, a *Ceratorhiza* strain, growing on potato dextrose agar (PDA) at 23°C; (b) monilioid cells growing on oat meal agar (OMA).

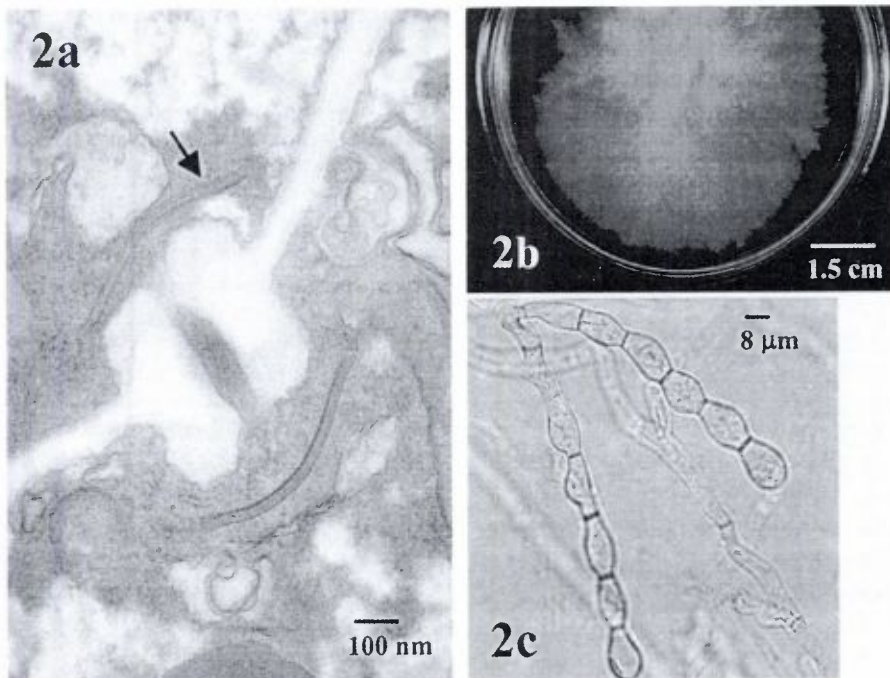


Figure 2. Bic 68 (UAMH 9844), an *Epulorhiza* strain isolated from a protocorm of *Platanthera praeclara*: (a) septal ultrastructure showing entire parenthesomes (arrow); (b) mycelium of Bic 68 appeared as a waxy submerged colony; (c) monilioid cells growing on potato dextrose agar (PDA).

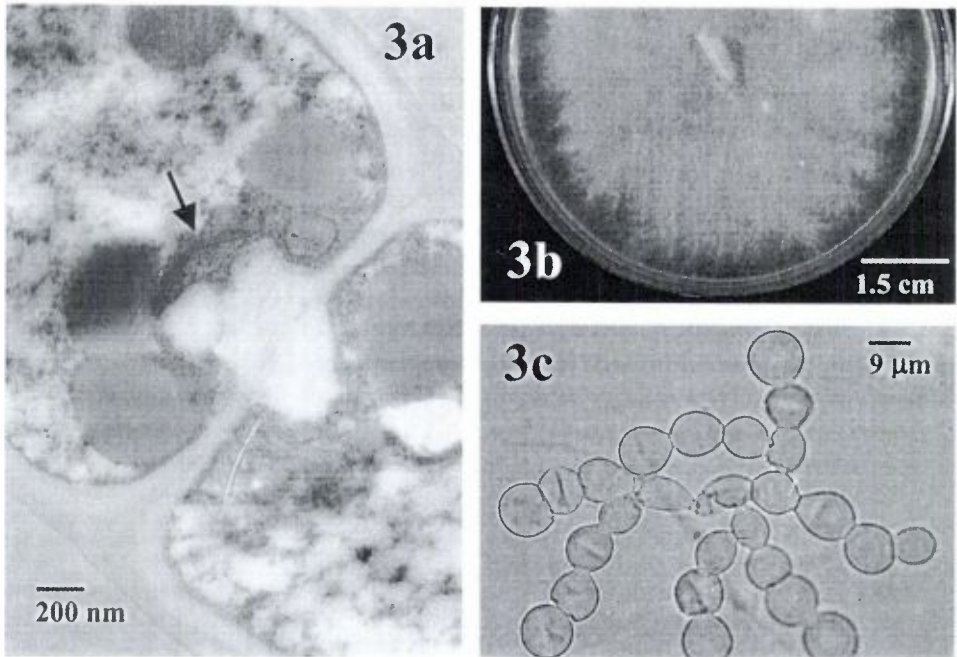


Figure 3. An *Epulorhiza* isolate, Hel 166 (UAMH 9846), recovered from roots of mature *Platanthera praeclara* from a site in Missouri: (a) a micrograph showing an entire parenthesome (arrow); (b) mycelial growth is typical of *Epulorhiza* with a waxy, submerged colony; (c) nearly spherical monilioid cells borne in short chains growing on potato dextrose agar (PDA).