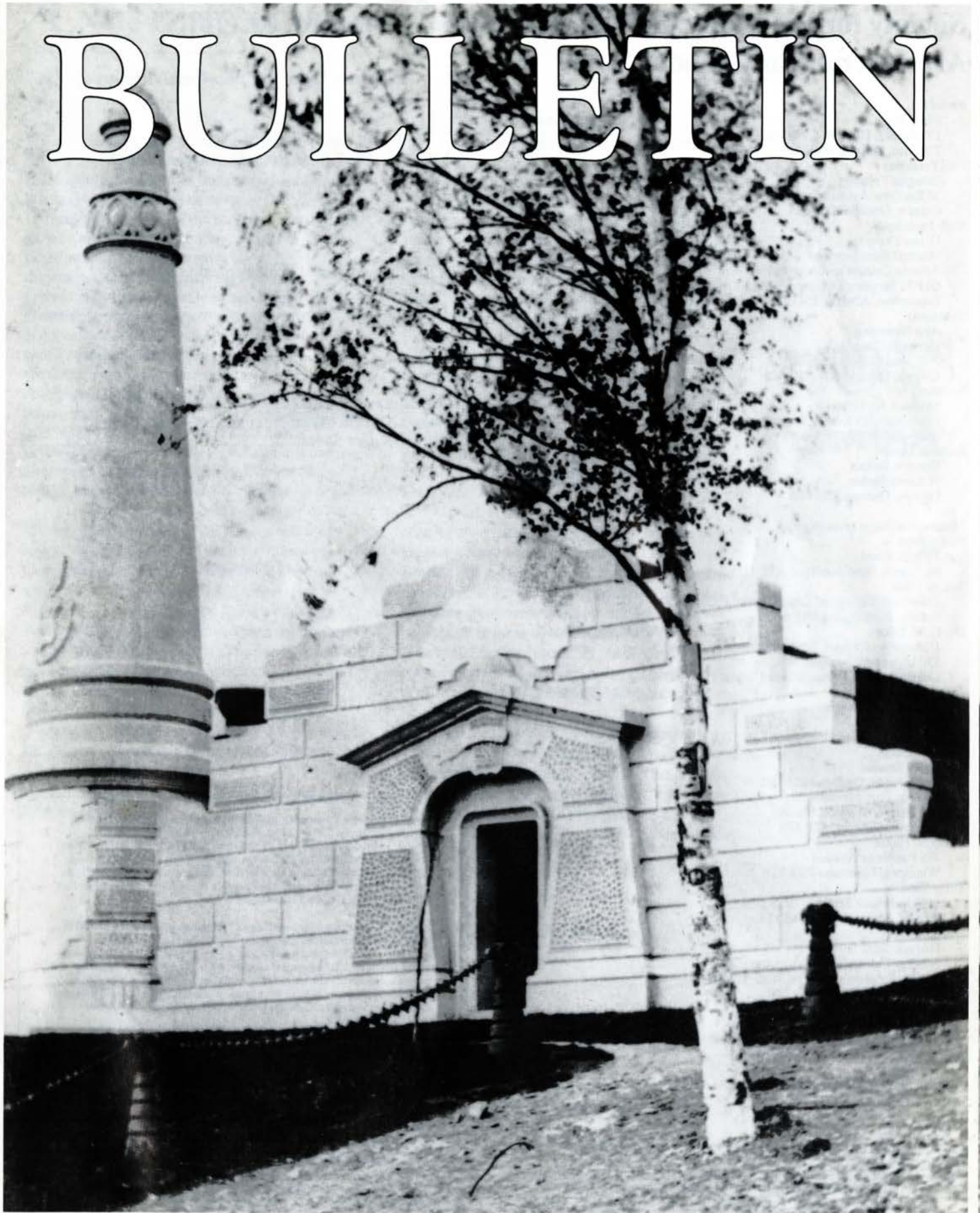


SOCIETY FOR THE STUDY OF ARCHITECTURE IN CANADA/SOCIÉTÉ POUR L'ÉTUDE DE L'ARCHITECTURE AU CANADA

BULLETIN



VOLUME/TOME 16

DECEMBER 1991 DÉCEMBRE

NUMBER/NUMÉRO 4

Society for the Study of Architecture in Canada

BULLETIN

Volume/Tome 16, Number/Numéro 4

President Mark Fram 159 Russell Hill Road, No. 101 Toronto, Ontario M4V 2S9	res. (416) 961-9956
Past President Douglas Franklin 30 Renfrew Avenue Ottawa, Ontario K1S 1Z5	office (613) 237-1867 res. 236-5395
Vice-President Diana Thomas Historic Sites Service Alberta Culture and Multiculturalism Old St. Stephen's College, 8820 112 Street Edmonton, Alberta T6G 2P8	office (403) 431-2343
Treasurer Ann Bowering Heritage Canada P.O. Box 1358, Station B Ottawa, Ontario K1P 5R4	office (613) 237-1066
Secretary Shannon Ricketts Environment Canada, Parks Service Ottawa, Ontario K1A 0H3	office (819) 953-4611
Bulletin Editor Gordon Fulton 76 Lewis Street Ottawa, Ontario K2P 0S6	office (819) 997-6966 fax: (819) 953-4909
Members-at-large (east to west) Philip Pratt 7 Plank Road St. John's, Newfoundland A1E 1H3	office (709) 576-8612
Jim St. Clair University College of Cape Breton, P.O. Box 5300 Sydney, Nova Scotia B1P 6L2	office (902) 539-5300
Dr. C. W. Eliot University of Prince Edward Island 550 University Avenue Charlottetown, Prince Edward Island C1A 4P3	office (902) 566-0400
Allen Doiron Provincial Archives P.O. Box 6000 Fredericton, New Brunswick E3B 5H1	office (506) 453-2122
Donna McGee 13310 Sauriol Pierrefonds, Québec H8Z 1B1	office (514) 939-7000
Anne M. de Fort-Menares 100 Quebec Avenue, Ste 608 Toronto, Ontario M6P 4B8	(416) 769-6862
Philip N. Haese 785 Pasadena Avenue Winnipeg, Manitoba R2T 2T6	(204) 269-7994
Terry Sinclair 3111 Retallack Street Regina, Saskatchewan S4S 1T5	
Dorothy Field Historic Sites Service Alberta Culture and Multiculturalism Old St. Stephen's College, 8820 112 Street Edmonton, Alberta T6G 2P8	office (403) 431-2344
Valda Vidners 1047 Barclay Avenue, Apt 702 Vancouver, British Columbia V6E 4H2	(604) 662-7623
Ann Peters Box 2303 Yellowknife, Northwest Territories X1A 2P7	(403) 873-7821

A Note from the Editor/Note du rédacteur
by Gordon Fulton 87

The Built Environment, Culture, and Leisure:
The Case of the Ecomuseum*
by Dr. R. Peter Heron 88

Great Princes affected great Monuments: George
Browne's Molson Mausoleum and its Antecedents*
by Dr. J. Douglas Stewart 98

* Proceedings

Membership fees are payable at the following rates: Student, \$15.00; Individual/Family, \$30.00; Organization/Corporation/Institution, \$50.00; Patron, \$20.00 (plus a donation of not less than \$100.00). There is a surcharge of \$5.00 for all foreign memberships. Contributions over and above membership fees are welcome, and are tax-deductible. Please make your cheque or money order payable to the SSAC and send to Box 2302, Station D, Ottawa, Ontario K1P 5W5.

L'abonnement annuel est payable aux prix suivantes : étudiant, 15,00 \$; individuel/famille, 30,00 \$; organisation/société/institut, 50,00 \$; bienfaiteur, 20,00 \$ (plus un don d'au moins 100,00 \$). Il y a des frais additionnels de 5,00 \$ pour les abonnements étrangers. Les contributions au-dessus de l'abonnement annuel sont acceptées et déductibles d'impôt. Veuillez s.v.p. faire le chèque ou mandat poste payable à l'ordre de SEAC et l'envoyer à la Case postale 2302, succursale D, Ottawa (Ontario) K1P 5W5.