

EXTRACTS OF THE BROWN SEAWEED, *ASCOPHYLLUM NODOSUM*, EFFECT
ARABIDOPSIS THALIANA – *MYZUS PERSICAE* INTERACTION

by

Chaminda De Silva Weeraddana

Submitted in partial fulfilment of the requirements
for the degree of Master of Science

at

Dalhousie University
Halifax, Nova Scotia

in co-operation with

Nova Scotia Agricultural College
Truro, Nova Scotia

May 2012

© Copyright by Chaminda De Silva Weeraddana, 2012

DALHOUSIE UNIVERSITY
NOVA SCOTIA AGRICULTURAL COLLEGE

The undersigned hereby certify that they have read and recommend to the Faculty of Graduate Studies for acceptance a thesis entitled “EXTRACTS OF THE BROWN SEAWEED, *ASCOPHYLLUM NODOSUM*, EFFECT *ARABIDOPSIS THALIANA* – *MYZUS PERSICAE* INTERACTION” by Chaminda De Silva Weeraddana in partial fulfilment of the requirements for the degree of Master of Science.

Dated: May 15th, 2012

Supervisor: _____

Readers: _____

DALHOUSIE UNIVERSITY
AND
NOVA SCOTIA AGRICULTURAL COLLEGE

DATE: May 15th, 2012

AUTHOR: Chaminda De Silva Weeraddana

TITLE: EXTRACTS OF THE BROWN SEAWEED, *ASCOPHYLLUM*
NODOSUM, EFFECT *ARABIDOPSIS THALIANA* – *MYZUS PERSICAE*
INTERACTION

DEPARTMENT OR SCHOOL: Department of Environmental Sciences

DEGREE: MSc CONVOCATION: October YEAR: 2012

Permission is herewith granted to Dalhousie University to circulate and to have copied for non-commercial purposes, at its discretion, the above title upon the request of individuals or institutions. I understand that my thesis will be electronically available to the public.

The author reserves other publication rights, and neither the thesis nor extensive extracts from it may be printed or otherwise reproduced without the author's written permission.

The author attests that permission has been obtained for the use of any copyrighted material appearing in the thesis (other than the brief excerpts requiring only proper acknowledgement in scholarly writing), and that all such use is clearly acknowledged.

Signature of Author

TABLE OF CONTENTS

LIST OF TABLES	viii
LIST OF FIGURES.....	ix
ABSTRACT.....	xi
LIST OF ABBREVIATION AND SYMBOLS USED	xii
ACKNOWLEDGEMENTS.....	xiv
CHAPTER 1: INTRODUCTION	1
1.1 GENERAL INTRODUCTION	1
1.2 PROJECT HYPOTHESIS	2
1.3 OBJECTIVES	2
CHAPTER 2: LITERATURE REVIEW.....	3
2.1 <i>ASCOPHYLLUM NODOSUM</i> (L.) LE JOL.....	3
2.2 <i>MYZUS PERSICAE</i> (SULZER).....	6
2.2.1 LIFE HISTORY	7
2.2.2 DAMAGE TO HOST PLANTS	8
2.3 <i>ARABIDOPSIS THALIANA</i>	8
2.4 RESISTANCE MECHANISMS	10
2.5 PLANT RESPONSE TO INSECT HERBIVORY	12
2.6 PLANT MOLECULAR RESPONSES TO APHID FEEDING.....	13
2.7 CYTOKININS.....	15
2.8 LEAF SENESCENCE.....	17
2.9 LITERATURE REVIEW SUMMARY	18
CHAPTER 3: EFFECT OF COMMERCIAL EXTRACT OF <i>ASCOPHYLLUM NODOSUM</i> ON GROWTH AND SEED YIELD OF <i>ARABIDOPSIS THALIANA</i>	19

3.1 ABSTRACT.....	19
3.2 INTRODUCTION	20
3.3 MATERIALS AND METHODS	22
3.3.1 PLANT MATERIAL AND GROWTH CONDITIONS.....	22
3.3.2 PREPARATION AND APPLICATION OF ANE AND INORGANIC CONTROL	22
3.3.3 MEASUREMENTS OF GROWTH PARAMETERS.....	22
3.3.4 STATISTICAL ANALYSIS	23
3.4 RESULTS	25
3.4.1 EFFECT OF ANE ON FRESH WEIGHT OF ARABIDOPSIS	25
3.4.2 EFFECT OF ANE ON DRY WEIGHT OF ARABIDOPSIS	26
3.4.3 EFFECT OF ANE ON LENGTH OF INFLORESCENCE OF ARABIDOPSIS.....	28
3.4.4 EFFECT OF ANE ON LEAF AREA OF ARABIDOPSIS	30
3.4.5 ANE EFFECT ON DRY WEIGHT OF SILIQUES OF ARABIDOPSIS	31
3.5 DISCUSSION	32
CHAPTER 4: EFFECT OF <i>ASCOPHYLLUM NODOSUM</i> EXTRACT TREATMENT ON <i>ARABIDOPSIS THALIANA</i> – <i>MYZUS PERSICAE</i> INTERACTION.....	35
4.1 ABSTRACT.....	35
4.2 INTRODUCTION	36
4.3 MATERIALS AND METHODS	39
4.3.1 BIOLOGICAL MATERIALS AND CHEMICALS.....	39
4.3.2 PREPARATION AND APPLICATION OF ANE AND CONTROL.....	39
4.3.3 GPA INFESTATION	40
4.3.4 ANE EFFECT ON ANTIBIOSIS MECHANISMS IN GPA.....	40
4.3.4.1 NO-CHOICE EXPERIMENTS USING CLIP CAGES	40

4.3.4.2 NO-CHOICE EXPERIMENTS USING WHOLE ARABIDOPSIS.....	41
4.3.4.3 EFFECT OF ORGANIC COMPOUNDS PRESENT IN ANE ON GPA REPRODUCTION	41
4.3.4.4 EXPERIMENTAL DESIGN AND STATISTICAL ANALYSES	41
4.3.5 ANE EFFECT ON GPA SETTLING.....	42
4.3.5.1 MULTIPLE-CHOICE FEEDING-PREFERENCE EXPERIMENTS	42
4.3.5.2 PAIRED CHOICE EXPERIMENTS USING CLIP CAGES.....	43
4.3.5.3 PAIRED CHOICE EXPERIMENTS USING WHOLE ARABIDOPSIS PLANT	44
4.3.5.4 EXPERIMENTAL DESIGN AND STATISTICAL ANALYSES	45
4.3.6 ANE EFFECT ON PLANT TOLERANCE AGAINST GPA.....	46
4.3.6.1 MEASUREMENT OF FRESH WEIGHT AND ESTIMATION OF CHLOROPHYLL PIGMENTS	46
4.3.6.2 EXPERIMENTAL DESIGN AND STATISTICAL ANALYSES	47
4.3.7 VISUALIZATION OF CELL DAMAGE	47
4.3.8 EXPERIMENT ON RECOVERY OF ARABIDOPSIS FROM GPA DAMAGE AFTER REMOVAL OF GPA.....	48
4.3.8.1 EXPERIMENTAL DESIGN AND STATISTICAL ANALYSES	48
4.3.9 QUANTITATIVE GENE ANALYSES OF ARABIDOPSIS AS AFFECTED BY ANE	49
4.3.9.1 ISOLATION OF RNA	49
4.3.9.2 PURIFICATION OF RNA AND cDNA SYNTHESIS.....	49
4.3.9.3 REAL TIME PCR ANALYSES.....	49
4.4 RESULTS	52
4.4.1 NO-CHOICE EXPERIMENTS USING CLIP CAGES	52
4.4.2 NO-CHOICE EXPERIMENTS USING WHOLE ARABIDOPSIS.....	52
4.4.3 ANE EFFECT ON GPA SETTLING	53

4.4.4 EFFECT OF ANE ON CHLOROPHYLL A, B AND TOTAL CHLOROPHYLL CONTENT AND FRESH WEIGHT OF ARABIDOPSIS INFESTED WITH GPA.....	54
4.4.5 DRY WEIGHT OF ROSETTES AND SILIQUES OF ARABIDOPSIS RECOVERY FOLLOWING GPA INFESTATION	55
4.4.6 VISUALIZATION OF CELL DAMAGE	56
4.4.7 GENE EXPRESSION STUDY IN ARABIDOPSIS AS AFFECTED BY ANE.....	58
4.5 DISCUSSION	64
CHAPTER 5: GENERAL CONCLUSIONS	68
REFERENCES..	70
APPENDIX A: MINERAL COMPOSITION OF LONG ASHTON SOLUTION (LANS) AND INORGANIC CONTROL	84

LIST OF TABLES

Table 2.1 Composition of alkaline extract of ANE, a commercial product of Acadian Seaplants Limited (Dartmouth, Canada) derived from <i>Ascophyllum nodosum</i> (pH ~ 10.0).....	4
Table 3.1 ANOVA results for an analysis of the effects of leaf sprays of <i>Ascophyllum nodosum</i> extract (ANE) and harvest time on fresh weight of Arabidopsis.	25
Table 3.2 ANOVA results for an analysis of the effects of soil drench of <i>Ascophyllum nodosum</i> extract (ANE) and harvest time on fresh weight of Arabidopsis.	25
Table 3.3 ANOVA results for an analysis of the effects of leaf sprays of <i>Ascophyllum nodosum</i> extract (ANE) and harvest time on dry weight of Arabidopsis.	26
Table 3.4 ANOVA results for an analysis of the effects of soil drench application of <i>Ascophyllum nodosum</i> extract (ANE) and harvest time on dry weight of Arabidopsis.	26
Table 3.5 ANOVA results for an analysis of the effects of leaf sprays of <i>Ascophyllum nodosum</i> extract (ANE) and harvest time on length of inflorescence of Arabidopsis.	28
Table 3.6 ANOVA results for an analysis of the effects of soil drench of <i>Ascophyllum nodosum</i> extract (ANE) and harvest time on length of inflorescence of Arabidopsis.	28
Table 4.1 Primer sequences used in the study.....	51

LIST OF FIGURES

Figure 2.1 The brown seaweed, <i>Ascophyllum nodosum</i> in situ on a beach in the Annapolis Basin at Cornwallis, Nova Scotia.	3
Figure 2.2 Different growth stages in <i>Arabidopsis thaliana</i> : (A) Arabidopsis at 4 day, (B) 13 day, (C) 21 days after germination, (D) first emergence of the peduncle, (E) first flower opens, (F) senescence completed, (G) siliques, (H) seeds.	10
Figure 2.3 Chemical structures of selected cytokinins: (A) kinetin (6-furfurylamino purine), (B) 6-benzylamino purine (BA), and (C) trans-zeatin.	16
Figure 3.1 Effect of leaf sprays of <i>Ascophyllum nodosum</i> (ANE) on dry weight (g) (\pm SE) of Arabidopsis.	27
Figure 3.2 Effect of foliar application of <i>Ascophyllum nodosum</i> (ANE) on length of inflorescence (cm) (\pm SE) of Arabidopsis.	29
Figure 3.3 Effect of two application methods of <i>Ascophyllum nodosum</i> (ANE) (soil drench and leaf spray) on leaf area (cm ²) (\pm SE) of Arabidopsis.	30
Figure 3.4 Effect of two application methods of <i>Ascophyllum nodosum</i> (ANE) (soil drench and leaf spray) on dry weight of siliques (g) (\pm SE) of Arabidopsis.	31
Figure 4.1 Multiple-choice feeding-preference set-up to observe <i>Myzus persicae</i> (GPA) settling on different treatments, (A) water, (B) inorganic control and ANE at three concentrations (C) 1.0, (D) 2.0 and (E) 3.0 g/L. Treated Arabidopsis leaves were randomly placed on a plastic disk.	43
Figure 4.2 Paired choice test to observe <i>Myzus persicae</i> (GPA) settling of control and ANE treated Arabidopsis leaves after clipping.	44
Figure 4.3 Paired choice test to observe <i>Myzus persicae</i> (GPA) settling on control and ANE treated whole Arabidopsis plants.	45
Figure 4.4 Comparison of total <i>Myzus persicae</i> (\pm SE) (GPA) five days after release of 15 adult GPA each on Arabidopsis plants following leaf spray and soil drench treatment of <i>Ascophyllum nodosum</i> extract (ANE).	53
Figure 4.5 Comparison of total fresh weight (\pm SE) content in Arabidopsis with or without treatment with <i>Ascophyllum nodosum</i> extract (ANE) at 8, 11 and 14 days after <i>Myzus persicae</i> infestation.	55

Figure 4.6 Comparison of total dry weight (\pm SE) of siliques of Arabidopsis with or without treatment with <i>Ascophyllum nodosum</i> extract (ANE) following 16 days Arabidopsis recovery.....	56
Figure 4.7 Trypan blue stained <i>Myzus persicae</i> infested Arabidopsis mutant <i>CPR5</i> leaf observed under dissection microscope.....	57
Figure 4.8 Trypan blue stained <i>Myzus persicae</i> infested Arabidopsis Col-0 (control) leaf observed under dissection microscope.....	57
Figure 4.9 Trypan blue stained <i>Myzus persicae</i> infested <i>A. nodosum</i> extract (ANE) treated Arabidopsis Col-0 leaf observed under dissection microscope.	58
Figure 4.10 Quantitative expression of <i>ARR5</i> gene in Arabidopsis at 24, 48 and 72 h with and without infestation by <i>Myzus persicae</i> , or treatment with <i>Ascophyllum nodosum</i> extract (ANE).....	59
Figure 4.11 Quantitative expression of <i>CLH1</i> gene in Arabidopsis at 24, 48 and 72 h with and without infestation by <i>Myzus persicae</i> , or treatment with <i>Ascophyllum nodosum</i> extract (ANE).....	60
Figure 4.12 Quantitative expression of senescence associated gene 21 (<i>SAG21</i>) in Arabidopsis at 24, 48 and 72 h with and without infestation by <i>Myzus persicae</i> , or treatment with <i>Ascophyllum nodosum</i> extract (ANE).....	61
Figure 4.13 Quantitative expression of senescence associated gene 13 (<i>SAG13</i>) in Arabidopsis at 24, 48 and 72 h with and without infestation by <i>Myzus persicae</i> , or treatment with <i>Ascophyllum nodosum</i> extract (ANE).....	62
Figure 4.14 Quantitative expression of phytoalexin deficient 4 (<i>PAD4</i>) gene in Arabidopsis at 24, 48 and 72 h with and without infestation by <i>Myzus persicae</i> , or treatment with <i>Ascophyllum nodosum</i> extract (ANE).....	63

ABSTRACT

An alkaline extract of the brown seaweed, *Ascophyllum nodosum* (ANE) increases plant growth and imparts resistance against biotic stresses. However, little is known of the effects of ANE on insects. *Myzus persicae*, green peach aphid (GPA), and Arabidopsis model were used to determine whether application of ANE confers protection from GPA infestation. GPA colonization increased in ANE treated plants, associated with improved biomass. However, ANE treated plants exhibited less cell death and also showed a greater ability to recover from GPA injury. Lower expression of *SAG13*, *SAG21* and *CHL1* and a higher expression of *ARR5* was observed in ANE treated plants. Taken together, gene expression along with lower cell death suggests ANE may delay senescence in Arabidopsis. Delayed senescence in Arabidopsis following ANE treatment may be a result of increased cytokinin activity. Increased GPA numbers could be, at least in part, due to delayed senescence in Arabidopsis following ANE treatment.

LIST OF ABBREVIATION AND SYMBOLS USED

α	alpha
<i>ACT2</i>	Actin 2
ANOVA	analysis of variance
<i>ARR5</i>	Arabidopsis response regulator 5
ANE	<i>Ascophyllum nodosum</i> extract
bp	base pair
°C	degree Celsius
<i>CLH1</i>	Chlorophyllase 1
cDNA	complimentary deoxyribonucleic acid
DNA	deoxyribonucleic acid
<i>df</i>	degrees of freedom
g	centrifugation force
<i>F</i>	F-test statistic
GPA	green peach aphid
g/L	grams per liter
h	hour
ι	iota
JA	jasmonic acid
kb	kilobase
λ	lambda
L	litre
LAR	local acquired resistance
μg	microgram
μL	microlitre
μM	micromolar
μm	micrometer
M	molar
Mg	milligram
min	minute(s)
ml	milliliter
ng	nanogram
LANS	Long Ashton standard nutrient solution
<i>P</i>	P value
<i>PAD4</i>	Phytoalexin deficient 4
%	percent
PR	pathogenesis-related proteins
PCR	polymerase chain reaction
RNA	ribonucleic acid
RT-PCR	reverse transcriptase polymerase chain reaction
SA	salicylic acid
SAR	systemic acquired resistance
<i>SAG13</i>	Senescence associated gene 13
<i>SAG21</i>	Senescence associated gene 21

SWC seaweed extract concentrates
Taq *Thermus aquaticus*

ACKNOWLEDGEMENTS

My first and foremost heartfelt gratitude extended to my supervisor, Dr. Balakrishnan Prithiviraj, for his tremendous academic support, guidance and encouragement throughout my thesis project. Without his help this thesis project would not have been possible. I would like to thank supervisory committee members Professor Emeritus Robin Robinson and Dr. Christopher Cutler for their great support and guidance for my thesis project. I would like to thank Dr. Owen Wally, Dr. Jatinder, Dr. Saveetha and Dr. Aaron Mills for their great support and suggestions throughout my project. My gratitude is also extended to Dr. Alan T. Critchley (Acadian Seaplants Limited) for his great support and guidance. I would like to express my special thanks to Dr. Dian Patterson, Dr. Raj Lada, Maria Law, Jill Rogers and Heather Hughes at NSAC for their support. I like to thank all the members of Marine Bio-products Research Laboratory (MBRL) at NSAC. Thanks for Jason Sproule for helping me whenever I need help in entomology lab at NSAC. I would like to thank Malinda and Surangi for their great support during the period in Truro. I would like to thank Nova Scotia Department of Agriculture and Acadian Seaplants Limited for giving funding for my thesis project. My deepest heart-felt love and thanks to my loving parents, sister, brother and my loving wife Ramya for their constant love and supporting hands.

CHAPTER 1: INTRODUCTION

1.1 GENERAL INTRODUCTION

Ascophyllum nodosum (L.) Le Jol. is a dominant perennial brown seaweed found along the Atlantic coastlines that is used for production of commercial extracts (Ugarte and Sharp, 2001). *A. nodosum* extract (ANE) enhances plant growth, and increases tolerance/ resistance against various biotic and abiotic stresses (Craigie, 2010). It contains various bioactive polysaccharides such as laminarin, fucoidan, and alginates (Khan et al., 2009). Laminarins found in *A. nodosum* extracts (ANE) are considered to be potent elicitors of plant defense (Patier et al., 1993). Elicitors are chemicals that activate plant defense signaling pathways (Mejía-Teniente et al., 2010). *Laminaria digitata* (Hudson) J.V. Lamouroux, which also contains laminarin, activates salicylic acid (SA) and jasmonic acid (JA) defense pathways in tobacco (*Nicotiana tabacum*) (Klarzynski et al., 2000).

There are only a few published reports on the use of ANE as a plant protection agent against insects. Application of ANE for plants induced resistance against black bean aphid, *Aphid fabae* Scop. (Stephenson, 1966) and two-spotted red spider mite, *Tetranychus urticae* Koch. (Hankins and Hockey, 1990) were reported. However, the mechanisms underlying these effects are not well understood. One of the reasons is the lack of a good model system to study the interactions. Plant-insect model was used which consists of model plant *Arabidopsis thaliana* (L.) Heynh and green peach aphid (GPA), *Myzus persicae* (Sulzer), were used to investigate whether ANE enhances resistance or tolerance to insects. There are several reasons for using GPA as an insect model: it is an

economically important insect pest with worldwide distribution (Blackman and Eastop, 2000) and it has rapid reproduction (Guerrieri and Digilio, 2008). Reasons for using *Arabidopsis* as a plant model are: small genome, (Meinke et al., 1998), availability of large genetic resources, a short life cycle and availability of numerous mutant strains (Somerville and Koornneef, 2002).

1.2 PROJECT HYPOTHESIS

A. nodosum extract (ANE) contains beneficial organic compounds that increase growth and yield, and improve resistance against biotic and abiotic stresses. It is hypothesized that organic compounds present in ANE will enhance vegetative growth and yield of *A. thaliana* and enhance resistance/ tolerance against green peach aphid (GPA), *M. persicae*. The objectives listed below were set to test these hypotheses.

1.3 OBJECTIVES

Major objectives of this study are:

- To examine the effect of *A. nodosum* extract on vegetative growth and yield of *A. thaliana*,
- To examine the effect of *A. nodosum* extract on resistance / tolerance in *A. thaliana* against *M. persicae*,
- To examine molecular changes in *A. thaliana* as affected by *A. nodosum* extract treatment under *M. persicae* infestation.

CHAPTER 2: LITERATURE REVIEW

2.1 *ASCOPHYLLUM NODOSUM* (L.) LE JOL.

Seaweeds are macroalgae found in shallow coastal waters, and are one of the prominent components of the marine environment. *Ascophyllum nodosum* is a dominant perennial brown seaweed found on intertidal shores of North America (Figure 2.1) and Europe, and it is commonly known as rockweed. It is one of the most predominant seaweed in Atlantic Canada. *A. nodosum* is widely used in the manufacturing of commercial seaweed products for use in agriculture (Ugarte and Sharp, 2001). Many marine algae contain industrially important polysaccharides including agar, carrageenans and alginic acids. Present research was conducted with alkaline *A. nodosum* extract (ANE) which contains different organic and inorganic components (Table 2.1.).



Figure 2.1 The brown seaweed, *Ascophyllum nodosum* in situ on a beach in the Annapolis Basin at Cornwallis, Nova Scotia.

Table 2.1 Composition of alkaline extract of ANE, a commercial product of Acadian Seaplants Limited (Dartmouth, Canada) derived from *Ascophyllum nodosum* (pH ~ 10.0).

Composition	Percentages from total dry powder of ANE
Organic matter content	45-55 %
Alginic acid	12-16 %
Fucose Polymers	13-17 %
Mannitol	4-6 %
Amino Acids	4-6 %
Other inorganic compounds	10-12 %
Ash	45-55 %
Nitrogen	0.8-1.5 %
Phosphorus	0.5-1.0 %
Potassium	14-18 %
Calcium	0.3-0.6 %
Iron	75-250 ppm
Magnesium	0.2-0.5 %
Manganese	8-12 ppm
Sodium	3.0-5.0 %
Sulfur	1.0-2.0 %
Zinc	10-25 ppm

There are many beneficial effects of ANE (Khan et al., 2009). Previous studies on different seaweed extracts showed that plants that received ANE had increased shoot growth and development (Pise and Sabale, 2010; Crouch, 1990), increased yield (Dobromilska et al., 2008; Temple and Bomke, 1989), increased carbohydrates, proteins, free amino acids and polyphenol, (Pise and Sabale, 2010), increased nutrient uptake

(Beckett and Staden, 1990), and improved resistance to biotic (Crouch and Staden, 1993) and abiotic stresses such as salinity and water stresses (Nabati et al. 1994., Nabati, 1991). Further, ANE has shown to elicit cytokinin like activity (Khan et al., 2011). In turf grass application of seaweed extracts delayed senescence and improved turf quality (Schmidt, 1990). ANE increased chlorophyll levels in tomatoes, beans, wheat, barley and maize. This increase in chlorophyll might be due to betines present in the seaweed extracts. Further, betaines can act as osmoprotectants by increasing osmotic pressure in cytoplasm and also stabilizing cell membrane (McNeil et al., 1999).

Elicitors are group of chemicals capable of inducing plant defense. Some elicitors present in seaweed extracts are complex polysaccharides such as alginates, fucans, laminarins and carrageenans (Vera et al., 2011). For example, a component of red seaweeds, λ -carrageenan was found to be a potential elicitor of defense response in tobacco against the black shank pathogen, *Phytophthora parasitica* (Mercier et al., 2001). Further investigation revealed that λ -carrageenan induced ethylene, jasmonic and salicylic acid defense signaling pathways in tabacco. In a recent study, Sangha et al. (2011) examined the effect of different carrageenan on Arabidopsis resistance against cabbage looper, *Trichoplusia ni*. The λ - carrageenan showed higher expression of plant defensin 1.2 (*PDF1.2*), pathogenesis-related gene 1 (*PR1*) and trypsin inhibitor protein 1 (*TII*). ANE contains various bioactive polysaccharides such as laminarin, fucoidan, and alginates (Khan et al., 2009). Laminarins which are present in ANE, showed an elicitor activity of D-glycanase activities in *Rubus fruticosus* cell cultures (Patier et al., 1993). In a recent study, ANE treatment induced resistance of Arabidopsis to *Pseudomonas syringae* pv. tomato DC3000 (Subramanian et al., 2011). It was found that ANE activated

plant defensin 1.2 (*PDF1.2*) which was activated mostly in jasmonic acid signaling pathway.

There are very few scientific reports on the effects of ANE on insects.

Commercial products of ANE applied as leaf spray to strawberry plants, reduced the population of two-spotted red spider mites, *Tetranychus urticae* (Hankins and Hockey, 1990). ANE treatment induced resistance in broad beans against black bean aphid (*Aphid fabae*) (Stephenson, 1966). When ANE was applied to tomato plants, *Spodoptera exigua* larvae gained more body mass. Further, *Spodoptera exigua* larvae preferred root applied ANE treated plants than foliar applied plants (Reitz and Trumble, 1996).

2.2 MYZUS PERSICAE (SULZER)

Green peach aphid (GPA), *Myzus persicae* belongs to the superfamily Aphidoidea, order Hemiptera. Aphids can feed on most plant parts including shoots, roots as well as bark (Guerrieri and Digilio, 2008). GPA is found worldwide and in most vegetable producing areas of Canada, especially in British Columbia and Southern Ontario, where they are an important pests to potatoes (Howard et al., 1994). GPA is a major pest known to attack over 400 plant species and 40 plant families (Blackman and Eastop, 2000). The Cruciferae are one of the most susceptible hosts of GPA. Direct damage to the plant by feeding can be significant, but perhaps the major threat of GPA infestation is transmission of plant viruses (Racchah and Fereres, 2009).

GPA is a useful insect model to examine plant insect interactions (De Vos et al., 2007; Pegadaraju et al., 2007; Pegadaraju et al., 2005). There are several reasons to use GPA as an insect model. It is an economically important insect pest which is distributed worldwide (Blackman and Eastop, 2000). In addition, it is easily cultured and reproduces

quickly through asexual reproduction which makes the test population more homogeneous (Guerrieri and Digilio, 2008). A number of studies have also examined gene regulation in GPA, and the function of many GPA genes is known (De Vos et al., 2010; Ramsey et al., 2007).

2.2.1 LIFE HISTORY

Apterous (wingless) adults vary from 1.7 to 2.0 mm in length and are yellow to green in color (Figure 2.2 A). Alate (winged) adults tend to be darker in color (Figure 2.2 B). GPA nymphs are initially about 1 mm in length; they initially are green and then turn yellow (Figure 2.2 C). Nymphs can be produced sexually, but are often a result of parthenogenetic reproduction (without mating). Because color of GPA can vary, *M. persicae* is best distinguished from other aphids by the presence of convergent tubercles on the head and unevenly swollen moderately long cornicles on the abdomen (Blackman and Eastop, 2000). Winged forms usually appear when environmental conditions are unfavourable, and these forms mate and lay eggs, often during the late summer. However, winged forms may appear due to overcrowding on the host plant, and this enables dispersal to a larger area in search of host plants (Guerrieri and Digilio, 2008). Winged forms known as alate aphids have a black central dorsal patch on the abdomen (Figure 2.2 B) and the length varies to 1.2- 2.3 mm (Blackman and Eastop, 2000). Alate forms use visual sensors (Döring and Chittka, 2007), and also chemicals present in the plants (Pickett et al., 1992) to find the host plants.

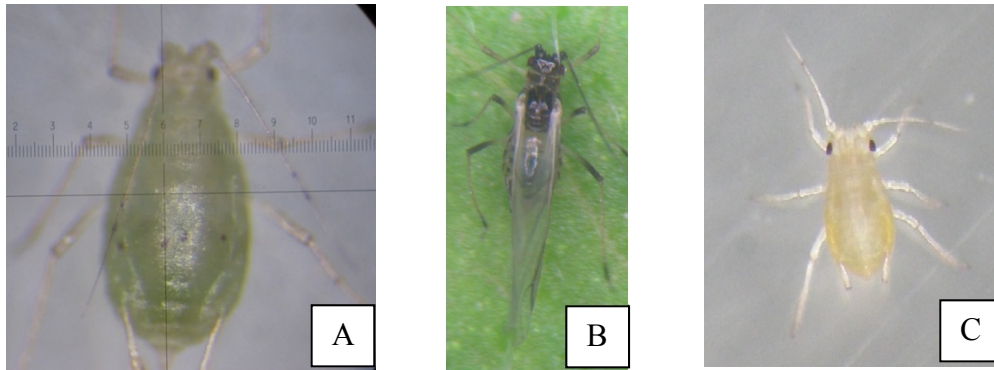


Figure 2.2 *Myzus persicae* apterous adult (A), alate adult (B), and nymph (C)

2.2.2 DAMAGE TO HOST PLANTS

Myzus persicae feeds on plant assimilates and is also capable being a vector for viruses (Kennedy et al., 1962). GPA is a phloem feeder that prefers young plant tissues. Feeding injury causes water stress, wilting and chlorosis (Deol et al., 2001), which can reduce growth and development of host plants (Petitt and Smilowitz, 1982). Aphids are also an important vectors of plant viruses (Pirone and Harris, 1977). Plant viruses spread by GPA in crucifers include: cucumber mosaic virus, turnip mosaic virus, and cauliflower mosaic virus (Cabrera y Poch et al., 1998). Examples of viruses which are spread by aphids in other crop families include: potato leaf roll virus (Ponsen, 1970), beet western yellow virus (Duffus and Gold, 1965), and lettuce mosaic virus (Moreno et al., 2007).

2.3 ARABIDOPSIS THALIANA

Arabidopsis thaliana, a small cruciferous weed, is a useful plant model for genetic and molecular studies. *A. thaliana* has a small genome (120 Mb) organized into five chromosomes (Meinke et al., 1998) and an estimated 27,416 protein-encoding genes (www.arabidopsis.org). The whole genome of Arabidopsis was sequenced in the year 2000 (The Arabidopsis Initiative, 2000). *A. thaliana* has many genetic and genomic

resources: it can easily be managed in small spaces, it has a relatively fast life cycle (around 8 weeks), it is easy to reproduce through seeds, and there is a large collection of mutants and transgenic plants that can be studied (Somerville and Koornneef, 2002). Arabidopsis growth can be separated into several stages such as seed germination, leaf development, rosette growth (Figure 2.2 A, B, C), inflorescence emergence (Figure 2.2 D), flower production (Figure 2.2 E), senescence completion (Figure 2.2 F), silique (Figure 2.2 G) and seed (Figure 2.2 H) production (Boyes et al., 2001). Many studies have used the Arabidopsis-green peach aphid (GPA) model to investigate plant-insect interactions at the molecular level (Louis et al., 2010; De Vos et al., 2007; Hunt et al., 2006; De Vos et al., 2005). Several accessions of *A. thaliana* were used to examine resistance to cabbage aphid in the field as well as laboratory conditions (Singh et al., 1994).

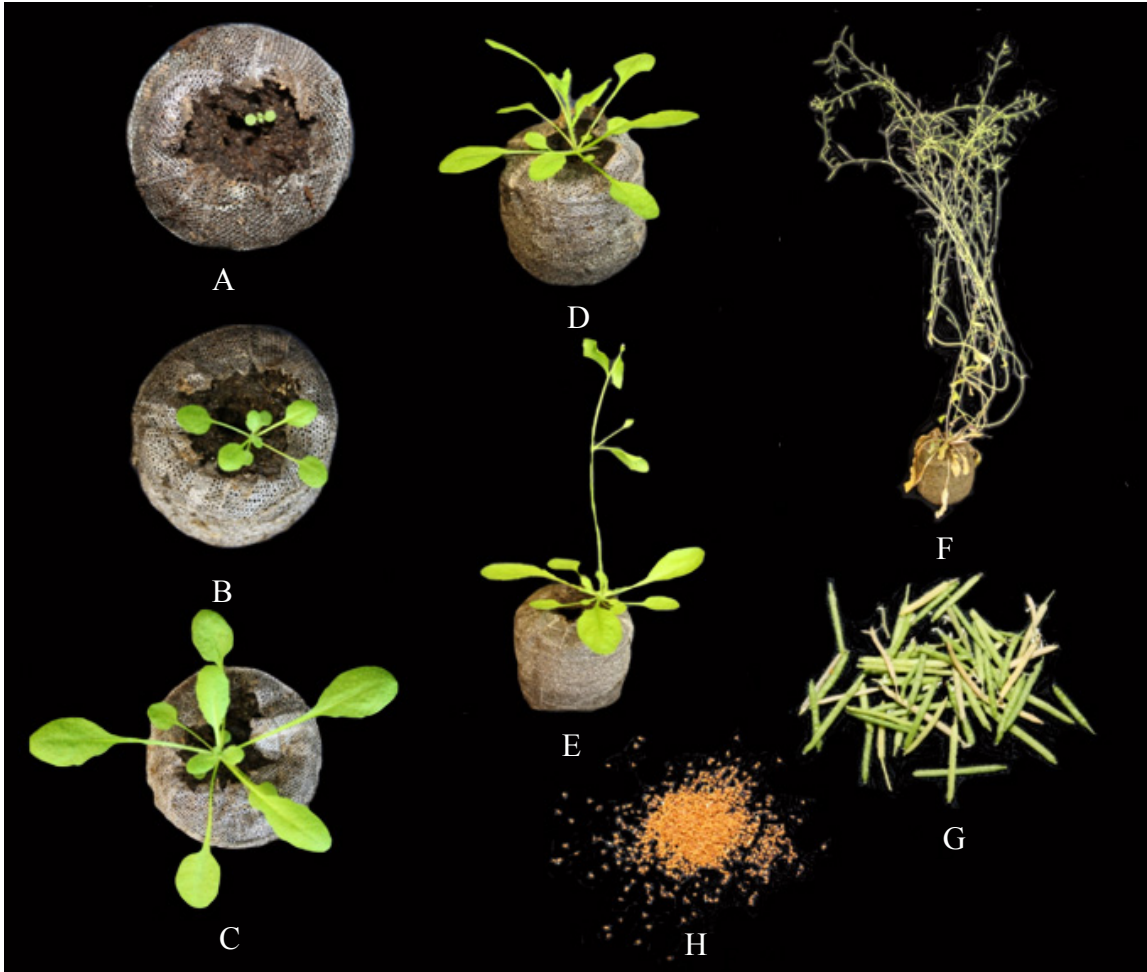


Figure 2.2 Different growth stages in *Arabidopsis thaliana*: (A) Arabidopsis at 4 day, (B) 13 day, (C) 21 days after germination, (D) first emergence of the peduncle, (E) first flower opens, (F) senescence completed, (G) siliques, (H) seeds.

2.4 RESISTANCE MECHANISMS

Plants have different resistance mechanisms to defend themselves against aphids. These include antibiosis, antixenosis and tolerance (Painter, 1951). Antibiosis affects the life cycle or biology of the insect by reducing reproductive capacity of aphids (Panda and Khush, 1995), whereas antixenotic factors affect feeding preference of aphids (Kogan and Ortmann, 1978). These defense mechanisms can occur during various stages of aphid feeding. For example, volatiles and non-volatiles produced in glandular trichomes can

affect aphid behavior when they are probing a plant tissue and searching for sieve elements (Neal et al., 1990). In Brassica species, it was found that the release of thiocyanates is toxic to aphids (Rask et al., 2000). Sealing of xylem vessels and callose deposition can affect aphid probing (Will and Bel, 2006). An antixenotic effect was tested using polygodial, a plant derived sesquiterpenoid. Aphids quickly detected the compound and it was found that aphid antenna tip was involved in the repellent activity (Dawson et al., 1986). In another study, Arabidopsis was used to test repellent activity of *cis*-jasmone, and the green peach aphid (GPA) was repelled, whereas the mustard aphid, *Lipaphis erysimi*, was attracted (Bruce et al., 2008).

Plant tolerance is a mechanism by which plants grow or recover faster following an insect infestation. It can be defined as the rapid accumulation of plant biomass in spite of an insect herbivory (John and Schwenke, 1994). Plant tolerance is an important factor in the management of insect pests (John and Schwenke, 1994). Several incidences of plant tolerance to arthropods such as an increased level of photosynthesis (Deol et al., 2001), increased growth (Brandt and Lamb, 1994) and increased yield (Jarvis et al., 1991) have been reported. John and Schewenke (1994) reviewed the advantages and disadvantages of plant tolerance. Plant tolerance does not affect insect biology, and there has no detrimental effect on natural enemies because tolerance could maintain a population of predators and parasitoids. Further, tolerance can increase the economic injury levels (EIL), and it can reduce expensive chemical treatments. There are several ways of quantifying tolerance. Visual ranking was used for assessing insect damage (Heng-Moss et al., 2002). Dixon et al. (1990) proposed a tolerance index (TI) by dividing the proportional weight loss of the plant by total number of insects at the end of the

experiment. Plant recovery from insect herbivory is another expression of having plant tolerance. Insect herbivory can reduce photosynthetic capacity of leaves, and it can affect the production of new leaves, storage organs and reproductive parts of plant (Meyer, 1998). There are several ways of recovering carbon gain capacity after insect herbivory. Delayed leaf senescence was described as one way of making the remaining leaves resistant after defoliation (Meyer, 1998).

2.5 PLANT RESPONSE TO INSECT HERBIVORY

Plants can incur damage from either chewing insects such as caterpillars or sucking insects such as aphids. Plant defense responses to insects can be classified into two categories: constitutive and inducible defense. Constitutive defenses are always present in the plant whereas inducible defenses are only produced after herbivore attack. There are various constitutive defenses in plants such as leaf cuticle (Zettler et al., 1969), thick cell walls, glandular trichomes (Musetti and Neal., 1997), epicuticular waxes (Alfaro-Tapia et al., 2007), and insecticidal allelochemicals (e.g. glucosinolates) (Kim et al., 2008). Metabolites present in glandular hairs produce chemicals (e.g. (E) - farnesene) (Gibson and Pickett, 1983) similar to alarm pheromones in aphids. This may affect the biology of insects (Walling, 2000) and play a role as a chemical constitutive defense response (Guerrieri and Digilio, 2008).

Inducible responses are elicited after infestation. Directly induced defense responses include digestive enzyme inhibitors such as protease inhibitors (Chen et al., 2005; Ussuf et al., 2001; Ryan, 2000) or reduced nutritional value (Hanhimäki, 1989). Moreover, plants synthesize insecticidal molecules such as phenolics, alkaloids, terpenoids (Karban and Baldwin, 1997) and glucosinolates. Glucosinolates are secondary

metabolites that are deterrents to generalist herbivores, whereas they act as an attractant to specialized herbivores (Rask et al., 2000). Glucosinolates themselves do not have insecticidal activity, but when they react with myrosinases, they produce the insecticidal compounds: nitriles, isothiocyanates, epithionitriles and thiocyanates (Rask et al., 2000). The stealthy feeding behavior of aphids minimizes the reaction of glucosinolate with myrosinase. However, indole glucosinolate breakdown products contribute to reduced reproduction in GPA on *A. thaliana* plants. Furthermore glucosinolate breakdown products have a deterrent effect on GPA (Kim et al., 2008). Indirect induced defenses include attracting natural enemies (Walling, 2008) such as predators and parasitoids (Van Poecke, 2007). Volicitin or N-(17-hydroxylinolenoyl)-L-glutamine, a chemical found in oral secretions of beet armyworms, applied to plants, it induces the production of volatiles that subsequently attracts natural enemies of beet armyworm (Alborn et al., 2000).

2.6 PLANT MOLECULAR RESPONSES TO APHID FEEDING

Plant defense responses to insects activate salicylic acid, jasmonic acid, and ethylene dependent defense pathways (Thompson and Goggin, 2006). The jasmonic acid signaling pathway is activated by wounding caused by chewing insects (Onkokesung et al., 2010), whereas salicylic acid signaling pathway is activated by sucking insects (Du et al., 2009; Zarate et al., 2007). However, there are “cross-talks” between defense signaling pathways (Koornneef and Pieterse, 2008; Pieterse and Dicke, 2007).

Salicylic acid (SA) is an important signaling molecule in induced plant resistance to pathogens. It plays a major role in LAR (local acquired resistance) (Wildermuth et al., 2001) as well as SAR (systemic acquired resistance) to pathogens (Ryals et al., 1996).

SAR is a type of resistance which follows an earlier infection by a pathogen that can lead to systemic immunity to various pathogens in plants. It involves a burst of reactive oxygen species, cell death, endogenous hormonal activation and expression of defense genes (Choi and Hwang, 2011). LAR is a type of resistance acquired in the infected cells and nearby cells (Métraux, 2002). Accumulation of SA in SAR and LAR is important for the expression of pathogenesis-related proteins (PR) which suppress pathogen invasion. H₂O₂ also plays a role as a signaling molecule in PR protein expression (Chamnongpol et al., 1998). Structural and biochemical changes in the cell lead to activation of defense related genes (Kuc, 2006). Phenylalanine ammonia lyase (*PAL*) is one of the genes that activate after changes in cells (Klessig et al., 2000). *PAL* is involved in the biosynthesis of phytoalexins which are antimicrobial compounds (Klessig et al., 2000). A hypersensitive response (HR) includes rapid production of reactive oxygen species and eventually causes cell death (Mur et al., 2008).

PAD4 (phytoalexin deficient4) gene, which is involved in camelexin synthesis in SA signaling, is associated with plant resistance to pathogens (Glazebrook et al., 1997). It has a similar sequence to that of lipases (Feys et al., 2001) and encodes a nucleocytoplasmic protein. Moreover, the *PAD4* gene is expressed in GPA infested plants (Pegadaraju et al., 2007), and it can modulate GPA induced leaf senescence. Arabidopsis leaf senescence is characterized by chlorophyll loss, cell death and higher expression of senescence associated genes (*SAGs*). With GPA infestation, *PAD4* mutant plants exhibited delayed senescence compared to wild type Col-0 plants. Activation of leaf senescence is a defense response against GPA, whereas delayed senescence lowers plant's resistance to GPA (Pegadaraju et al., 2005). In addition, the Arabidopsis *PAD4*

mutant showed increased numbers of GPA compared to wild type plants (Pegadaraju et al., 2005). An electronic monitoring technique (EPG) showed that GPA prefers to feed longer on *PAD4* mutant plants compared to wild type plants. In choice experiments, GPA showed increased preference to *PAD4* mutants over wild type plants (Pegadaraju et al., 2007). Constitutive expresser of PR genes5 (*cpr5*) and suppressor of SA insensitivity2 (*ssi2*) that are considered as Arabidopsis hypersenescence mutant plants exhibits higher chlorophyll, higher cell death and higher expression of SAG genes showed low GPA reproduction as compared to wild-type (Col) plants (Pegadaraju et al., 2005).

2.7 CYTOKININS

Plant hormones are naturally occurring organic substances which affect plant physiological processes such as growth, differentiation and development at low concentrations (Davies, 2010). Plant hormones include auxins, abscisic acid, cytokinins, ethylene, gibberellins, brassinosteroids, jasmonic acid and salicylic acid (Santner et al., 2009). Cytokinins are one of the abundant plant growth regulators present in seaweeds (Senn, 1987). Naturally occurring cytokinins are adenine derivatives which have either isoprene-derived or an aromatic side chain at the *N6* terminus (Sakakibara, 2006). Some examples of synthetic and natural cytokinins are: diphenylurea, zeatin, kinetin (6-furfurylamino-purine). *Trans*-zeatin (Figure 2.4 C) is the most abundant naturally occurring cytokinin in Arabidopsis. Kinetin (Figure 2.4 A) and benzyladenines (Figure 2.4 B) are other examples of synthetic cytokinins.

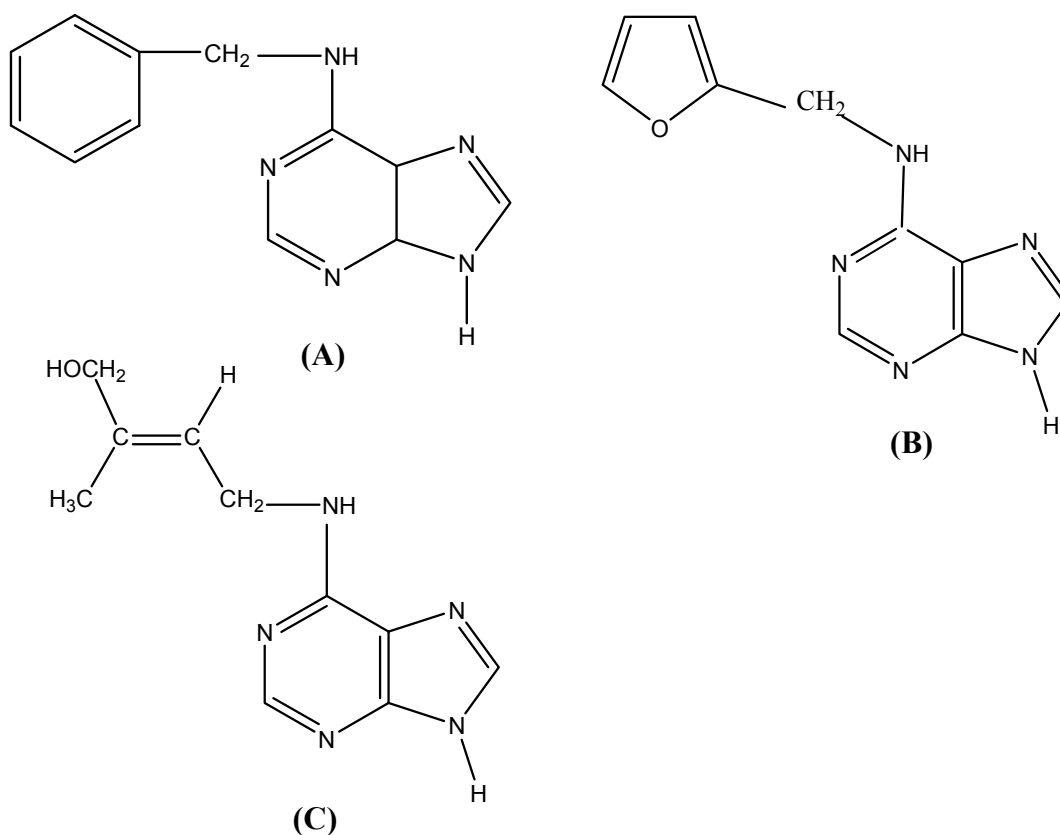


Figure 2.3 Chemical structures of selected cytokinins: (A) kinetin (6-furfurylamino purine), (B) 6-benzylamino purine (BA), and (C) trans-zeatin.

Cytokinins play a major role in several physiological processes in plants, such as growth and development of cells, shoot initiation (Frett and McCardell, 1990), retarding senescence (Mok and Mok, 1994), increasing chlorophyll content, inhibiting carbohydrate translocation, mobilizing metabolites (Towne and Clenton, 1983) and increasing crop productivity (Ashikari et al., 2005). Root inhibition was observed *in vitro* with a high cytokinin to auxin ratio (Peres et al., 1999). *IPT*, a gene encoding isopentenyl transferase enzyme that catalyzes cytokinin biosynthesis was studied using senescence specific promoter P_{SAG12}-*IPT* in transgenic tobacco plants. It was found that endogenous

cytokinins can regulate the leaf senescence (Gan and Amasino, 1996). These transgenic tobacco plants showed increased number of flowers, biomass and yield compared to wild type plants (Gan and Amasino, 1995). An increased concentration of cytokinin increases net CO₂ fixation in plants, due to increase assimilate transport and nutrient uptake (Satoh et al., 1977).

2.8 LEAF SENESCENCE

Leaf senescence is a complex process which involves changes in physiology, biochemistry and gene expression in the leaf cells (Lim et al., 2003). Leaf senescence in *Arabidopsis* depends on endogenous factors such as aging and hormones, but also on environmental factors such as stress and nutrient supply. Moreover, leaf senescence can be explained as a process which occurs in last stage of their development which leads to cell death. When leaf senescence begins, nitrogen, carbon and minerals will flow from mature to immature parts of the plants. Several events are involved in leaf senescence such as the degradation of chloroplasts, leaf proteins and chlorophylls (Buchanan-Wollaston, 1997). There are several genes involved in the senescence process which are referred to as senescence associated genes (*SAGs*) (Lim et al., 2003). *SAG13* and *SAG21* gene expression are induced by ozone treatment, and it was suggested that they are not associated with age dependent senescence, whereas *SAG12* was expressed during aging in *A. thaliana* leaves (Pegadaraju et al., 2005).

There are several plant hormones which regulate senescence. Ethylene, methyl jasmonate, brassinosteroids and salicylic acid were identified as plant hormones that accelerate senescence (Lim et al., 2003). Cytokinins were identified as plant hormones which can delay the leaf senescence (Gan and Amasino, 1995). Isolated cytokinin,

kinetin (6-furfurylaminopurine) showed delayed senescence in excised wheat leaves (Mik et al., 2011). However, transgenic tobacco plants with delayed senescence produced more flowers (Gan and Amasino, 1995), increased chlorophyll, and there were fewer dead leaves compared to control plants (Ori et al., 1999). Furthermore, delaying senescence in plants resulted in better recovery after herbivory (Meyer, 1998).

2.9 LITERATURE REVIEW SUMMARY

This literature review focuses on effects of *A. nodosum extract* (ANE) on *M. persicae* (GPA) - *A. thaliana* interaction. The section outlines information on ANE, GPA and Arabidopsis, in order to build a platform to better understand the interaction. ANE has many beneficial effects that include enhanced growth and resistance/ tolerance against biotic and abiotic stresses. Plant resistance and tolerance can be achieved through elicitation of plant defense responses. However, there is little information on ANE effects on insects. To understand how plants cope with aphid attack, I discussed three major resistance mechanisms that plants use to defend themselves against herbivorous insects. These mechanisms include antibiosis, antixenosis and tolerance. The mechanisms were then discussed in terms of influence on the plant in response to insect herbivory.

There are many reports on the promotion of plant growth following ANE treatment. Enhanced growth following ANE treatment may be due to activity of plant growth regulators. Among plant growth regulators, cytokinins play a major role in plant growth and development. Cytokinin activity increased following ANE treatment. Therefore cytokinins and their effect on plant growth and development may play an important role in this plant-insect interaction. The overall aim in this study was to understand more clearly the interaction of ANE on the GPA-Arabidopsis model.

**CHAPTER 3: EFFECT OF COMMERCIAL EXTRACT OF *ASCOPHYLLUM*
NODOSUM ON GROWTH AND SEED YIELD OF *ARABIDOPSIS THALIANA***

3.1 ABSTRACT

Seaweeds and their extracts have been used as an organic soil amendment for centuries. *Ascophyllum nodosum* is brown macroalga found on northern Atlantic coasts and most commonly used in agriculture. As a model plant, *Arabidopsis thaliana* was used in this study in order to achieve rapid and systematic phenotypic analyses. *A. nodosum* extract (ANE) at 1.0 g/L was applied to Arabidopsis as leaf spray and soil drench. Control containing the same inorganic nutrient components in ANE was used. Leaf area was measured at 32nd day after planting. ANE applied as soil drench did not have an effect on dry weight, length of inflorescence and seed yield. However, there was a significant increase in dry weight, length of inflorescence and seed yield when ANE was applied as foliar treatment.

3.2 INTRODUCTION

Organic fertilizers can deposit organic matter and improve soil conditions for beneficial organisms relative to chemical fertilizers (Celik et al., 2004). In addition, they are non-toxic and cause less harm to the environment. To meet the increasing demand of organic fertilizers, several options have been explored. The application of seaweed extracts has been recognized as one of the better options. The use of seaweed extracts as organic fertilizers have many beneficial effects including enhanced yield (Dobromilska et al., 2008; Crouch, 1990) and their quality (Zodape, 2009), a delay of fruit senescence and an induced tolerance to biotic (Featonby-Smith and Van Staden, 1983) and abiotic stress conditions (Yan, 1993).

Ascophyllum nodosum (L.) Le Jol. is a brown macroalga found on intertidal shores of North America and Europe (Ugarte and Sharp, 2001). Numerous beneficial effects have been reported with *Ascophyllum* seaweed extracts (Khan et al., 2009). Extracts of marine algae contain secondary metabolites such as agar, carrageenan and alginic acid. Among organic components present in *A. nodosum* extracts (ANE), plant growth regulators have been studied to a large extent. Cytokinin is one of the most abundant plant growth regulators found in seaweeds (Senn, 1987) and plays a major role in several physiological processes in plants such as growth and development of cells, shoot initiation (Frett and McCardell, 1990), delayed senescence (Mok and Mok, 1994), increased photosynthesis, inhibition of carbohydrate translocation, mobilization of metabolites (Towne and Clenton, 1983) and increased crop production (Ashikari et al., 2005). Extracts from brown seaweed treated plants showed cytokinin-like activities (Khan et al., 2011). When seaweeds were applied to turfgrasses, it improved the turf

quality while delaying the senescence process in the treated grasses (Schmidt, 1990). Increased cytokinin levels in transgenic tobacco plants resulted in plants with increased biomass, flowers and seed yield compared to wild type plants (Gan and Amasino, 1995). Other than cytokinin, ethylene is major plant hormone involved in fruit ripening (Chaves and Mello-Farias, 2006). 1-aminocyclopropane-1-carboxylic acid (ACC) which is a precursor of the ethylene biosynthesis pathway was found in brown seaweed extracts (Nelson and Van Staden, 1985). Organic compounds present in seaweed extracts (SWE) might behave as a chelating agent for nutrients (Lynn, 1972). An extract of the red alga, *Kappaphycus alvarezii* increased nutrient uptake (N, P, K and S) in soybean plants (Rathore et al., 2009).

Arabidopsis was used in the present investigation in order to achieve rapid quantification of ANE effects. Since Arabidopsis is a model plant used in genetic studies, phenotypic analyses from this study will help to build a platform to interpret gene expression studies. Specifically, this study aimed to investigate the effects of leaf spray and soil drench applications on vegetative growth and yield of Arabidopsis.

3.3 MATERIALS AND METHODS

3.3.1 PLANT MATERIAL AND GROWTH CONDITIONS

Arabidopsis seeds (Lehle Seeds Company, Texas, USA) were seeded in peat pellets (Jiffy Co., Shippegan, New Brunswick, Canada) and grown under florescent bulbs at 16:8 h (day : night) cycle ($100 \mu\text{mol photons m}^{-2} \text{s}^{-1}$) in a growth room at $23 \pm 2^{\circ}\text{C}$. After germination, plants were thinned as one plant per peat pellet. Thirteen day-old plants were used in the initial treatments. Plants were watered regularly and fertilized using a standard fertilizer solution (20-20-20).

3.3.2 PREPARATION AND APPLICATION OF ANE AND INORGANIC CONTROL

An aqueous solution of ANE extract (Acadian Seaplants Limited, Dartmouth, NS, Canada) was prepared by dissolving the desired amount of ANE dry extract powder in distilled water by constant stirring by hand for 15 minutes. Modified Long Ashton solution (LANS) was used as a control, containing a similar inorganic composition as 1 g/L ANE dissolved in water (Appendix A). Two experiments were conducted using two application methods of ANE; leaf spray and soil drench. Freshly prepared ANE or control was applied as either a soil drench (10.0 ml applied to each peat pellet) or leaf spray ($\sim 500 \mu\text{L}$) per plant. Plants were treated every three days starting at 13 days post germination. Beyond 22 days, plants were treated weekly. Ten plants were harvested on each of 25, 32 and 39 days after post-germination.

3.3.3 MEASUREMENTS OF GROWTH PARAMETERS

During harvest, Arabidopsis were cut at the bottom of the stem at the soil line. Plants were blotted very gently with paper towel to remove free moisture, and fresh weight per plant was measured. Length of inflorescence was measured from the base to

the terminal flower of the main bolt of Arabidopsis. Plants were later dried in an oven at 60°C for three days, after which time dry weight was measured. At 35 day, before taking the dry weight of each plant, all leaves were separated and scanned with a scanner (Epson Expression 1000 XL). The digitalized image of each leaf was analyzed using image processing software (WinFOLIA 2008a, Regent Instruments Inc., Quebec, Canada) to measure total leaf area of plants at day 32 post-germination. Siliques from each plant were harvested on day 39. Siliques were oven dried at 60°C for three days, and total dry weight of siliques on each plant was determined.

3.3.4 STATISTICAL ANALYSIS

As mentioned in section 3.3.2, two different experiments were conducted. Each experiment consisted of 30 plants arranged in a two factor factorial design with 10 replicates for each treatment at each time point. The two factors analyzed were treatments and harvest time. Treatments were considered as a fixed factor and time as a random factor. There are two levels for treatment (control and 1 g/L ANE) and three levels for harvest time (day 25, 32 and 39). The effects of these factors on fresh weight, dry weight and length of peduncle were analyzed using Minitab 15.0 (Minitab Inc. Pennsylvania, USA) and PROC MIXED in SAS version 9.2, Cary, NC, USA). Tukey's test was performed when treatment*time interactions were significantly different ($\alpha = 0.05$).

Leaf area of Arabidopsis was measured in day 32. Two experiments were conducted as mention in section 3.3.2. Each experiment was consisted of 20 plants in a completely randomized design with 10 replicates for each treatment. Data were analyzed using ANOVA ($\alpha = 0.05$) in Minitab 15.

The experiment on seed yield of Arabidopsis was conducted as completely randomized block design. Two runs of experiments were conducted (July-August 2011 and January-February 2012) each constituting a block. Data were analyzed using ANOVA ($\alpha = 0.05$) in Minitab 15.

3.4 RESULTS

3.4.1 EFFECT OF ANE ON FRESH WEIGHT OF ARABIDOPSIS

There was no difference between control and ANE treatment on fresh weight of Arabidopsis for leaf spray (Table 3.1) and soil drench application (Table 3.2) of ANE. There was a significant effect of harvest time on fresh weight for both leaf spray (Table 3.1) and soil drench application methods (Table 3.2) of ANE. Plants were heavier at late harvest dates. There was no interaction between treatments*harvesting time on fresh weight of Arabidopsis for leaf spray (Table 3.1) and soil drench application (Table 3.2) of ANE.

Table 3.1 ANOVA results for an analysis of the effects of leaf sprays of *Ascophyllum nodosum* extract (ANE) and harvest time on fresh weight of Arabidopsis.

Effect	<i>df</i>	<i>F</i> value	<i>Pr</i> > <i>F</i>
Treatment	1	1.72	0.19
Harvest time	2	55.13	<0.01*
Harvest time x treatment	2	0.02	0.98

* Significant at $\alpha = 0.05$

Table 3.2 ANOVA results for an analysis of the effects of soil drench of *Ascophyllum nodosum* extract (ANE) and harvest time on fresh weight of Arabidopsis.

Effect	<i>df</i>	<i>F</i> value	<i>Pr</i> > <i>F</i>
Treatment	1	0.08	0.78
Harvest time	2	134.17	<0.01*
Harvest time x treatment	2	0.15	0.86

* Significant at $\alpha = 0.05$

3.4.2 EFFECT OF ANE ON DRY WEIGHT OF ARABIDOPSIS

Leaf treatment of ANE significantly increased dry weight of Arabidopsis (Figure 3.1, Table 3.3), and there was a significant interaction between ANE leaf treatment and harvest time. Moreover, leaf spray application of ANE had significant effects on length of inflorescence of Arabidopsis on day 39 post-germination ($P < 0.05$).

Soil application of ANE did not have a significant effect on the dry weight of Arabidopsis, and there was no significant interaction between ANE soil drench treatment and harvesting time (Table 3.4). However, dry weight in both ANE treated and control plants significantly increased over time (Table 3.4).

Table 3.3 ANOVA results for an analysis of the effects of leaf sprays of *Ascophyllum nodosum* extract (ANE) and harvest time on dry weight of Arabidopsis.

Effect	<i>df</i>	<i>F</i> value	<i>Pr</i> > <i>F</i>
Treatment	1	7.59	0.01*
Harvest time	2	139.71	<0.01*
Harvest time x treatment	2	6.91	<0.01*

* Significant at $\alpha = 0.05$

Table 3.4 ANOVA results for an analysis of the effects of soil drench application of *Ascophyllum nodosum* extract (ANE) and harvest time on dry weight of Arabidopsis.

Effect	<i>df</i>	<i>F</i> value	<i>Pr</i> > <i>F</i>
Treatment	1	0.95	0.33
Harvest time	2	152.49	<0.01*
Harvest time x treatment	2	0.96	0.39

* Significant at $\alpha = 0.05$

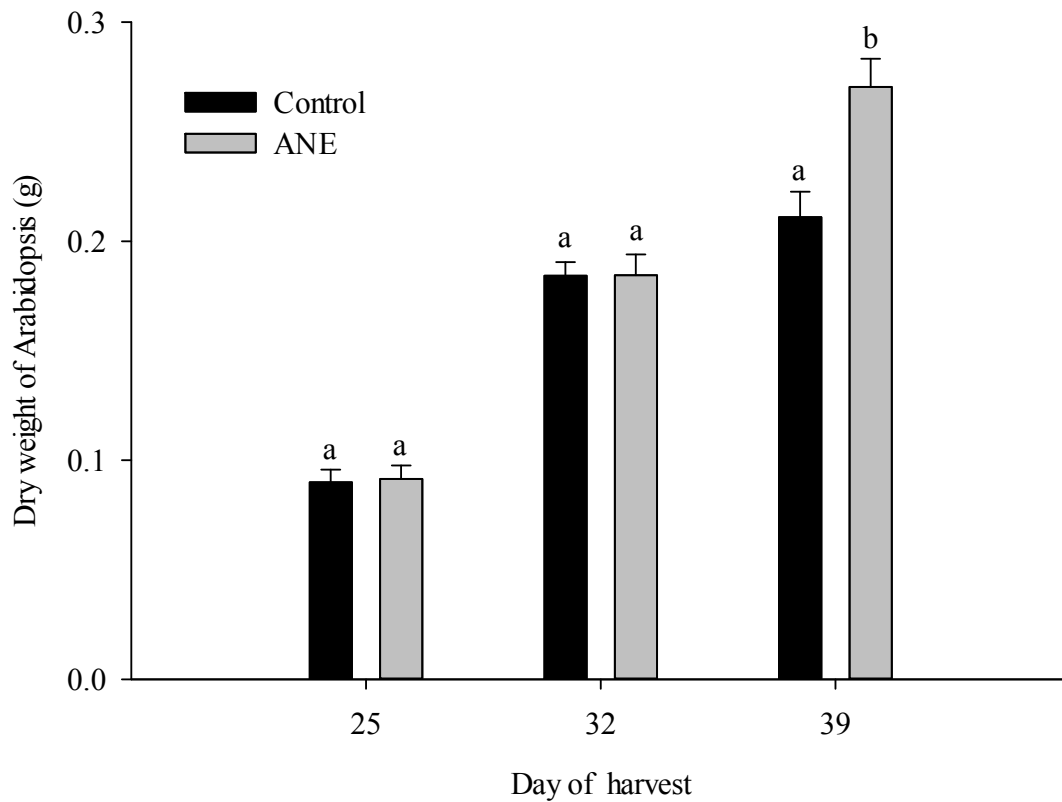


Figure 3.1 Effect of leaf sprays of *Ascophyllum nodosum* (ANE) on dry weight (g) (\pm SE) of Arabidopsis. Different letters above bars indicate treatments are significantly different on a given day (Tukey's test, $\alpha = 0.05$).

3.4.3 EFFECT OF ANE ON LENGTH OF INFLORESCENCE OF ARABIDOPSIS

Leaf treatment of ANE significantly increased the length of inflorescence of Arabidopsis (Figure 3.2, Table 3.5), and there was a significant interaction of ANE leaf treatment with harvest time, as the treatment effect was only seen in plants harvested on day 39 ($P < 0.05$).

Soil drench of ANE did not have significant effect on the length of inflorescence of Arabidopsis and there was no significant interaction of ANE soil drench treatment with harvest time (Table 3.6). However, dry weight in both ANE treated and control plants were significantly increased over time (Table 3.6).

Table 3.5 ANOVA results for an analysis of the effects of leaf sprays of *Ascophyllum nodosum* extract (ANE) and harvest time on length of inflorescence of Arabidopsis.

Effect	<i>df</i>	<i>F value</i>	<i>Pr > F</i>
Treatment	1	8.61	0.01*
Harvest time	2	138.37	<0.01*
Harvest time x treatment	2	3.50	0.04*

* Significant at $\alpha = 0.05$

Table 3.6 ANOVA results for an analysis of the effects of soil drench of *Ascophyllum nodosum* extract (ANE) and harvest time on length of inflorescence of Arabidopsis.

Effect	<i>df</i>	<i>F value</i>	<i>Pr > F</i>
Treatment	1	0.05	0.83
Harvest time	2	234.97	<0.01*
Harvest time x treatment	2	0.10	0.91

* Significant at $\alpha = 0.05$

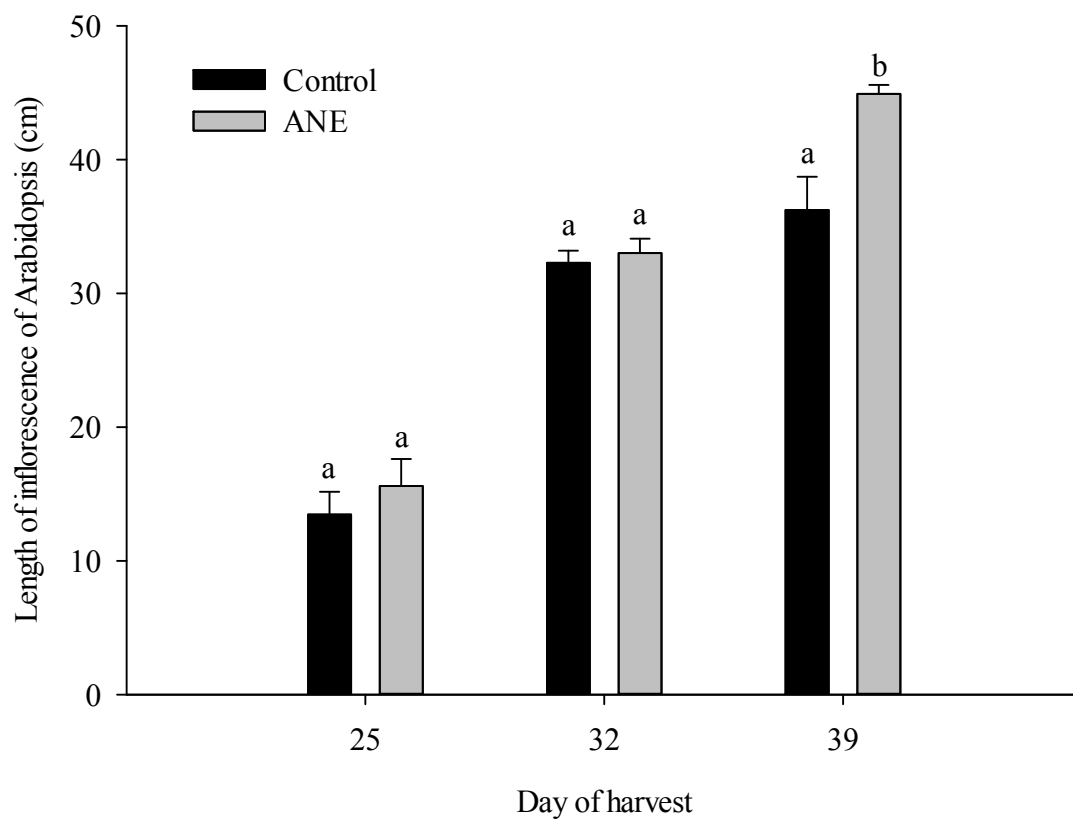


Figure 3.2 Effect of foliar application of *Ascophyllum nodosum* (ANE) on length of inflorescence (cm) (\pm SE) of Arabidopsis. Different letters above bars indicate treatments are significantly different on a given day (Tukey's test, $\alpha = 0.05$).

3.4.4 EFFECT OF ANE ON LEAF AREA OF ARABIDOPSIS

There was no significant ANE effect on leaf area of Arabidopsis on day 32 post-germination by either leaf spray ($F = 0.13$; $df = 1, 18$; $P = 0.13$; Figure 3.3), or soil drench ($F = 0.12$; $df = 1, 18$; $P = 0.73$; Figure 3.3).

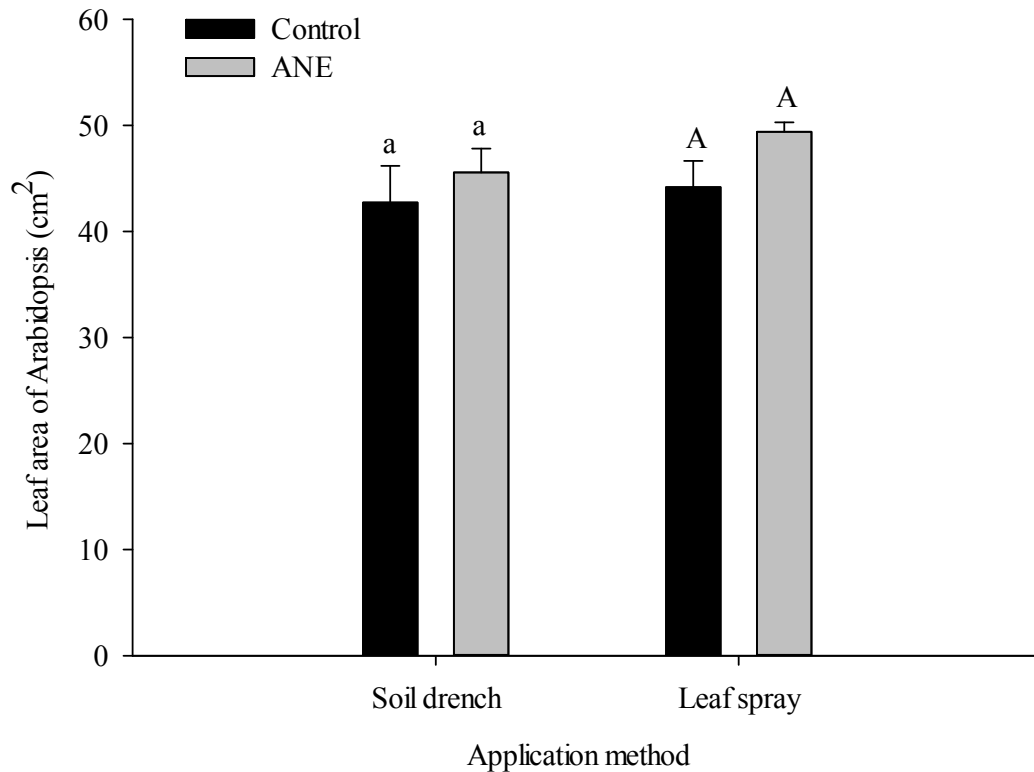


Figure 3.3 Effect of two application methods of *Ascophyllum nodosum* (ANE) (soil drench and leaf spray) on leaf area (cm²) (\pm SE) of Arabidopsis. Same case of same letters above bars indicate treatments are not significantly different (ANOVA, $\alpha = 0.05$)

3.4.5 ANE EFFECT ON DRY WEIGHT OF SILIQUES OF ARABIDOPSIS

There was no significant effect of soil drench of ANE on dry weight of siliques of Arabidopsis on day 39 ($F = 0.83$; $df = 1, 36$; $P = 0.37$; Figure 3.4). Leaf application of ANE enhanced the dry weight of siliques ($F = 8.49$; $df = 1, 36$; $P < 0.01$; Figure 3.4).

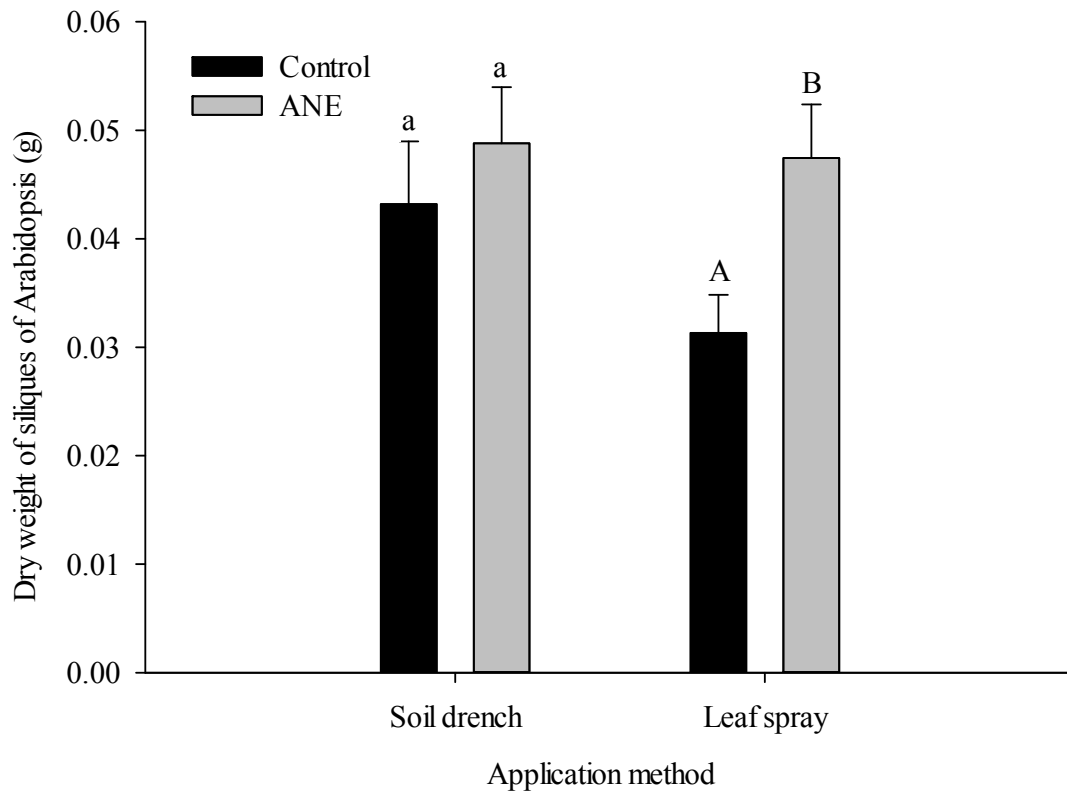


Figure 3.4 Effect of two application methods of *Ascophyllum nodosum* (ANE) (soil drench and leaf spray) on dry weight of siliques (g) (\pm SE) of Arabidopsis. Same case of different letters above bars indicate treatments are significantly different (ANOVA, $\alpha = 0.05$)

3.5 DISCUSSION

Results from this study showed that the leaf spray treatment of *A. nodosum* extract (ANE) increased whole plant dry weight, length of peduncle and dry weight of siliques of *Arabidopsis* at last harvest time (day 39). This may be due to increased activity of ANE treated plants in flowering stage. Previous reports have shown improved plant growth and yield increase following treatment with seaweed extracts. Soil drench application of extracts of the brown alga, *Ecklonia maxima* (Osbeck) Papenfuss enhanced the growth of tomato plants and reduced the infestation of root-knot nematode, *Meloidogyne incognita* (Crouch and Staden, 1993). Yield of ‘Thompson seedless’ grape (*Vitis vinifera* L.) increased 60 % over three years with application of ANE, giving an increase in: number of berries per bunch, berry size, length of rachis and number of primary bunches (Norrie and Keathly, 2006). Early ripening of the tomato was observed after application of seaweed extract concentrates (SWC). Total fruit fresh weight increased by 17% with the SWC. By the end of the experiment, plants treated with foliar application of 0.4% SWC had 70 % more flowers than control plants (Crouch and Staden, 1992). Overall, foliar spray had a greater effect on fruit yield compared to soil drenching with SWC.

In this present study, the controls contained the same mineral composition as that present in 1 g/L ANE. Thus any results indicating a beneficial increase in growth and yield will be due to organic components present in ANE. Enhanced fruit growth could be caused by organic plant growth promoting activity following the application of ANE. Seaweed extract (0.4 %) prepared from *Ecklonia maxima* increased the yield of lettuce plants by 14 %, and increased the amounts of Ca, K and Mg in leaves of lettuce. This was due, at least in part, to increased nutrient uptake due to application of *E. maxima* extract

(Crouch et al., 1990). Increased nutrient uptake could be a result of chelating activity of organic compounds present in seaweeds (Lynn, 1972). Increased flower and fruit weight might be a result of increased plant growth or the activity of hormones present in extracts (Crouch and Staden, 1992). Cytokinins, auxins, gibberellins and ethylene are important for increased flowering, and increased yield may be a result of increased cytokinin activity following SWC treatment (Crouch and Staden, 1992). Higher cytokinin levels were found at the fruiting stage of tomatoes and beans (Featonby-Smith, 1984). Seaweed extract treated plants showed more cytokinins in roots, which would be translocated to the developing fruits (Vonk, 1979; Davey and Van Staden, 1978) and seeds (Davey and Van Staden, 1979). On the other hand, higher seed yield may be the result of early fruit ripening, which has economic importance as earlier ripened fruit get better market prices (Crouch and Staden, 1992).

The observed different physiological processes affected by the application of seaweed extracts may explain the presence of other beneficial plant growth regulators in the extracts (Nelson and Van Staden, 1985). Ethylene is a phytohormone responsible for plant growth and developmental processes including fruit ripening. It can be active at very low concentrations (Chaves and Mello-Farias, 2006). Precursor of ethylene biosynthesis (1-aminocyclopropane-l-carboxylic acid) was found in commercial extracts of brown seaweed *Ecklonia maxima* (Nelson and Van Staden, 1985). There is an antagonistic effect between production of cytokinin and ethylene. Thus, while plants are under stress, there is a reduction in cytokinins, and an increase in the levels in ethylene (Hare and Van Staden, 1997). However, the effect of seaweed extracts on plant growth

has a greater influence than when cytokinin applied alone and this greater effect may due to different plant growth regulators present in the seaweed extracts (Allen et al., 2001).

**CHAPTER 4: EFFECT OF *ASCOPHYLLUM NODOSUM* EXTRACT
TREATMENT ON *ARABIDOPSIS THALIANA* – *MYZUS PERSICAE*
INTERACTION**

4.1 ABSTRACT

An extract of the brown macroalga, *Ascophyllum nodosum* (ANE) contains biological elicitors that impart plant resistance against various biotic and abiotic stresses. A green peach aphid (GPA) (*Myzus persicae*)-*Arabidopsis* model was used to examine how application of ANE affects the interaction of *Arabidopsis* with GPA. Antibiosis, antixenosis and tolerance mediated resistance were examined following treatment of plants with ANE. Application of ANE did not induce antibiosis or antixenosis in treated plants. GPA numbers were higher in ANE treated plants, which was also associated with higher plant biomass. However, ANE treated plants were significantly more tolerant of GPA feeding. Treated plants did not exhibit higher chlorophyll content as compared to control. ANE treated plants recovered quickly from GPA damage resulting significantly higher seed yield. As compared to control, the expression of the cytokinin response gene (*ARR5*) was higher (~ two fold) in ANE treated plants and without the presence of GPA (~ half fold). The expression of one of the chlorophyll degradation gene (*CLH1*) was lowered (half fold) in ANE treated plants with GPA whereas slightly higher expression was observed without GPA (~ quarter fold). Senescence associated gene 13 (*SAG13*) transcript level was lower (~ quarter fold) at 24 and 48 h with GPA and (~ half fold) at 48 and 72 h without GPA. Senescence associated gene 21 (*SAG21*) transcript level was suppressed (~ quarter fold) at all the time points without GPA but there was no change occurred in the presence of GPA. Expression of phytoalexin deficient gene (*PAD4*) did not change in any of the treatments. ANE-treated plants showed less trypan staining indicating reduced cell death. Taken together, these results suggest that ANE treatment activates delayed senescence in *Arabidopsis*, which may lower resistance to GPA but result in enhanced recovery of the plant after GPA feeding, which may be partly, mediated by increased cytokinins in the ANE treated plants.

4.2 INTRODUCTION

The world population estimated to exceed 8.9 billion by 2050 and it is essential to increase food supply to feed an increasing population (Cohen, 2003). At the same time there is increased competition for land, water and energy (Godfray et al., 2010). Crop losses due to insects are estimated to be between 26-40 % of total production in sugar beet, soybean, wheat, cotton, maize, potatoes and rice (Oerke and Dehne, 2004). Minimizing the losses due to insect damage has potential to achieve an increase food production without increasing the arable land area (Oerke and Dehne, 2004). The use of insecticides to control insects is costly and undesirable due to the development of pesticide resistance, damage to non-target organisms, and various unknown effects on animals. Induction of plant innate defense pathways through elicitors is one potential solution (Hammond-Kosack and Parker, 2003).

Elicitors are chemicals from biological or synthetic sources that activate or enhance the endogenous defense pathways within plants, resulting in increased tolerances towards a vast array of stressors (Mejía-Teniente et al., 2010). *Ascophyllum nodosum* (L.) Le Jol. is a brown macroalga found along the shores of the North Atlantic Ocean (Ugarte and Sharp, 2001). It is the most commercially applied macroalga in agriculture (Craigie, 2010). Macroalgae are a rich source of biological elicitors (Cluzet et al., 2004). Brown macroalga contains bioactive compounds including: alginates, laminarans and sulfated fucans (Rioux, 2007; Chevolut et al., 2001; Marais and Joseleau, 2001). These are considered to be effective elicitors of plant defenses (Craigie, 2010). However, there are only few reports on the effect of *A. nodosum* extracts (ANE) on plant resistance to insects. In this research, plant-insect model was utilized which consists of the model plant

Arabidopsis thaliana and the green peach aphid (GPA), *Myzus persicae* to investigate whether ANE could enhance resistance or tolerance to insects.

Plant resistance against insect pests can be grouped into three categories: antibiosis, antixenosis and tolerance (Painter, 1951). Antibiosis affects the development or physiology of insects (Panda and Khush, 1995) whereas antixenotic factors can deter settling and feeding of pests on resistant plants (Kogan and Ortman, 1978). Plant tolerance is a mechanism which allows the plant to grow or recover quickly under the pressure of insect pest populations (Painter, 1951). These defense mechanisms can occur during various stages of aphid feeding (Neal et al., 1990). Antibiosis and antixenosis mechanisms can be tested by no-choice and choice feeding experiments (Smith, 2005).

A. nodosum extract (ANE) treated plants showed cytokinin-like activities (Khan et al., 2011). Cytokinins play a major role in several physiological processes in plants such as growth and development of cells, shoot initiation (Frett and McCardell, 1990) and retarding senescence (Mok and Mok, 1994). Leaf senescence is a complex process which involves various changes in cellular physiology, biochemistry and gene expression. It can be explained as a process which occurs in the final stages of the plant life cycle leading to cell death. When leaf senescence begins, nitrogen, carbon and minerals in mature leaves will flow from mature parts to immature parts of plants (Buchanan-Wollaston, 1997). Leaf senescence in *Arabidopsis* is characterized by chlorophyll loss due to up regulation of chlorophyll degradation gene *CLH1* (Tsuchiya et al., 1999), up regulation of senescence associated genes (*SAGs*), and a higher rate of cell death (Pegadaraju et al., 2005; Lim et al., 2003; Satoko, 2003). Leaf senescence is one key mechanism to defend against GPA (Pegadaraju et al., 2005). Leaf senescence in

Arabidopsis can reduce GPA growth whereas delaying senescence can lower the resistance to GPA (Pegadaraju et al., 2005).

The phytoalexin deficient gene (*PAD4*), which is associated with camelexin synthesis and salicylic acid (SA) signaling, is associated with plant resistance to pathogens (Glazebrook et al., 1997), but it is also expressed in GPA infested plants (Pegadaraju et al., 2007). *PAD4* mutant plant which is deficient in camelexin synthesis and salicylic acid (SA) signaling was used in an insect choice experiment (Pegadaraju et al., 2007). GPA showed an increased preference for *PAD4* mutants over wild type plants. A number of plant hormones regulate the senescence process. Cytokinin is a plant hormone which can delay the leaf senescence (Gan and Amasino, 1995). Cytokinin primary response gene, *ARR5* is a gene which responds to exogenous application of cytokinins (Kieber, 2002). *CLH1* encodes for the first enzyme involved in chlorophyll degradation pathway and it can play a significant role in plant defense signaling pathways by detoxifying free chlorophylls after tissue damages. Moreover this can avoid accumulation of reactive oxygen species in plant cells (Kariola et al., 2005).

ANE contains biological elicitors which can activate plant defense signaling pathways that can lead to elicitation of resistance or tolerance in Arabidopsis against GPA. To test this hypothesis, experiments were conducted examining the development of antibiosis, antixenosis and tolerance mechanisms following Arabidopsis treatment with ANE.

4.3 MATERIALS AND METHODS

4.3.1 BIOLOGICAL MATERIALS AND CHEMICALS

Seeds of *A. thaliana* ecotype Columbia (Col-0) (Lehle seed company Texas, USA) were used for all the experiments. Arabidopsis mutant, *cpr5* (constitutive expresser of pathogenesis-related gene 5) plants have elevated levels of salicylic acid (SA) that leads to chlorotic lesions and spontaneous cell death (Bowling *et al.*, 1997) was used in a cell death visualization experiment. Seeds of Arabidopsis mutant *cpr5* (CS 3770) were obtained from Arabidopsis biological resource center, Ohio State University, Columbus, USA. Arabidopsis seeds were planted in peat pellets (Jiffy Co., Shippegan, New Brunswick, Canada) and grown under florescent bulbs at 16:8 h (day: night) cycle (100 $\mu\text{mol photons m}^{-2} \text{s}^{-1}$) and $23 \pm 2^{\circ}\text{C}$ in a growth room. After germination, plants were thinned so that one plant per peat pellet remained. Thirteen-day-old plants were used at the beginning of all experiments.

A GPA colony was started from a single adult, reared on the leaves of potato plants (Kennebec potatoes, Fred A. Duplessis, New Brunswick, Canada). GPA cultures were maintained in a greenhouse under 16:8 h day: night cycle (150 $\mu\text{mol photons m}^{-2} \text{s}^{-1}$) and $23 \pm 2^{\circ}\text{C}$. Apterous GPA adults were used at the start of all experiments.

Chemicals used in the experiments were of analytical grade purchased from Sigma Aldrich (ON, Canada) unless otherwise stated.

4.3.2 PREPARATION AND APPLICATION OF ANE AND CONTROL

An aqueous solution of ANE (Acadian Seaplants Limited, Dartmouth, NS, Canada) was prepared by dissolving the desired amount of extract powder in distilled water by constant stirring by hand for 15 min. Modified Long Ashton standard nutrient

solution (LANS) was used as control. Mineral composition in LANS was adjusted as same inorganic composition as in 1.0 g/L ANE (Appendix A.), but does not contain the organic components in ANE. Freshly prepared ANE or control solution was applied as either a soil drench application (10.0 ml) or leaf spray (~ 500 μ L) per plant. Leaf spray applications of treatments were sprayed to Arabidopsis rosette until dripping.

Arabidopsis were treated with either ANE or control three times, every three days starting at 13th day after germination. Beyond day 22, plants were treated weekly.

4.3.3 GPA INFESTATION

Twenty-one-day old treated Arabidopsis were infested with 15 adult GPA by placing with a paint brush on the center of rosettes of Arabidopsis. Each infested plant was kept in a transparent plastic container covered with a nylon mesh to retain GPA and prevent immigration of other insects on to test plants. All experiments (without no-choice experiments using clip cages) studied GPA reproduction on wild type Col-0 Arabidopsis through the method described by Pegadaraju et al. (2005).

4.3.4 ANE EFFECT ON ANTIBIOSIS MECHANISMS IN GPA

4.3.4.1 NO-CHOICE EXPERIMENTS USING CLIP CAGES

Two no-choice experiments were conducted using clip cages to study GPA reproduction with two different application methods: leaf spray and soil drench. Either leaf spray or soil drench application of water and ANE with three concentration levels (1.0, 2.0 and 3.0 g/L) were used as different treatments. A second whorl leaf of each Arabidopsis was clipped using a clip cage sized 36.5 x 25.4 x 9.5 mm (BioQuip Products, CA, USA). Each clip cage contained one second instar of GPA. The total number of GPA

within clip cage was counted 9 days after infestation. Each treatment consisted of nine replicates.

4.3.4.2 NO-CHOICE EXPERIMENTS USING WHOLE ARABIDOPSIS

Two no-choice experiments were conducted to study GPA population growth with two types of ANE application methods: leaf spray and soil drench. Either leaf spray or soil drench application of water and ANE with three concentration levels (1.0, 2.0 and 3.0 g/L) were used as different treatments. Each Arabidopsis received 15 adult apterous GPA at the center of the rosettes. Each treatment consisted five replicates. The experiments were conducted using a method described by Pegadaraju et al. (2005) with minor modifications. In this experiment, GPA infestation was done at day 21 post-germination of Arabidopsis and total number of GPA was counted 5 days after infestation.

4.3.4.3 EFFECT OF ORGANIC COMPOUNDS PRESENT IN ANE ON GPA REPRODUCTION

To distinguish the effect of organic components of ANE on GPA number, inorganic control was used. Soil drench of ANE (1.0 g/L) and inorganic control were used as treatments. Same procedure was followed as mention in section 4.3.4.2 and total GPA number was counted five days after infestation.

4.3.4.4 EXPERIMENTAL DESIGN AND STATISTICAL ANALYSES

The experiments were conducted using a completely randomized design (CRD). Before performing ANOVA, three assumptions were tested. The assumption of normality was checked using the normal probability plot of residuals (Anderson-Darling normality test); homogeneity of variance was checked by plotting the residuals vs. fitted values; independence was assumed through randomization of GPA infested Arabidopsis.

ANOVA was performed to test the effect of ANE on number of GPA. All analyses were performed at $\alpha = 0.05$. Tukey's test was performed to compare treatments when mean effects were significantly different. All analyses were done by using Minitab 15.0 (Minitab Inc. Pennsylvania, USA) and SAS version 9.2 software (Cary, NC, USA).

4.3.5 ANE EFFECT ON GPA SETTLING

4.3.5.1 MULTIPLE-CHOICE FEEDING-PREFERENCE EXPERIMENTS

Multiple-choice feeding-preference experiments were conducted to test antixenotic mediated resistance in *Arabidopsis* following leaf spray and soil drench treatments of ANE. Two choice experiments were conducted to study GPA settling with two types of ANE application methods: leaf spray and soil drench. Twenty apterous adult GPA were introduced approximately same distance to each leaf in the middle of plastic disk (Figure 4.1). Water, LANS (inorganic control) and ANE at three concentrations (1.0, 2.0 and 3.0 g/L) were selected as choices for GPA. Each arena was placed in an insect cage (BioQuip Products, CA, USA). The total number of GPA was counted in treated *Arabidopsis* plants after 48 h GPA infestation. Percentage settling was calculated for all five treatments. Each setup was replicated five times. The method used in this experiment (Castle et al., 1998) was carried out with a minor modification. Treated *Arabidopsis* leaves were not covered with a plexiglas cylinder.

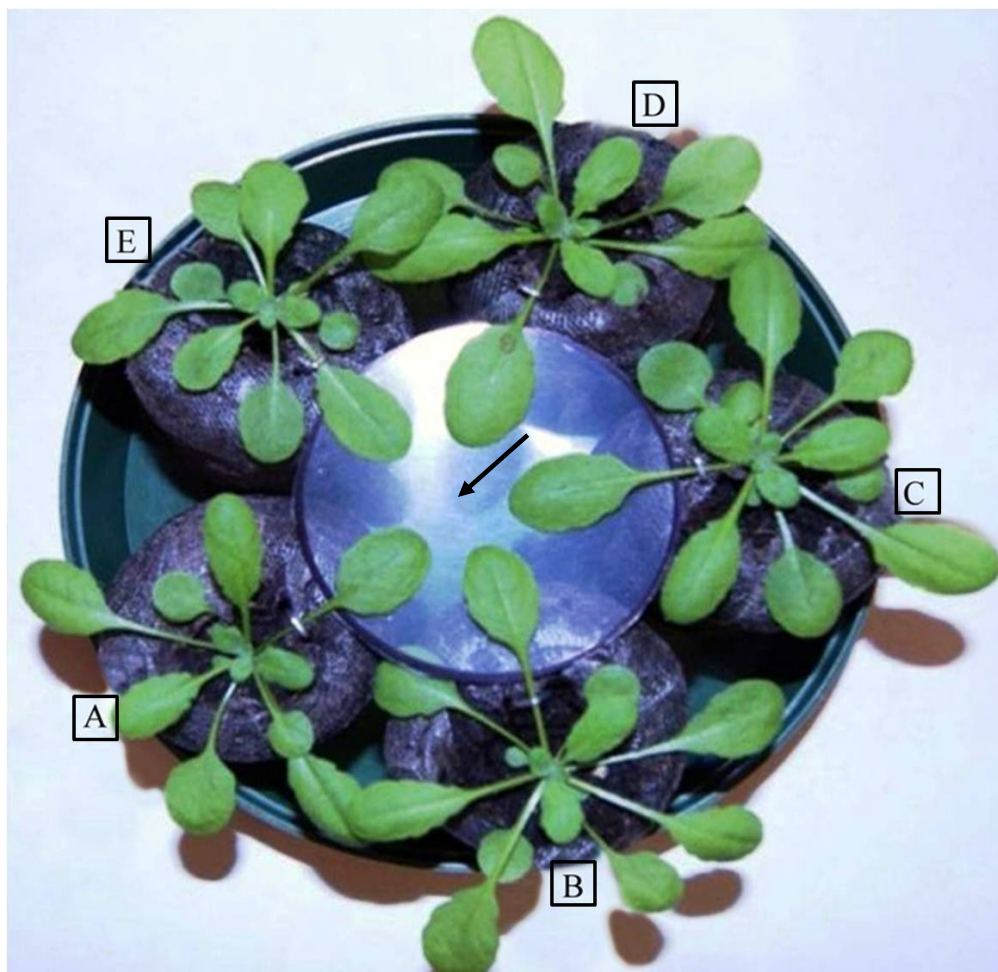


Figure 4.1 Multiple-choice feeding-preference set-up to observe *Myzus persicae* (GPA) settling on different treatments, (A) water, (B) inorganic control and ANE at three concentrations (C) 1.0, (D) 2.0 and (E) 3.0 g/L. Treated Arabidopsis leaves were randomly placed on a plastic disk. Arrow indicates the spot where the GPA was released.

4.3.5.2 PAIRED CHOICE EXPERIMENTS USING CLIP CAGES

One concentration of ANE (1.0 g/L) and the inorganic control were selected as treatments for paired choice experiments. Two paired choice experiments were conducted to study GPA settling with two types of ANE application methods: leaf spray and soil drench. Paired choice experiments were carried out using clip cages (36.5 x 25.4 x 9.5 mm; BioQuip Products, CA, USA) (Figure 4.2). Treatment either consisted of 1.0 g/L ANE or control. Second whorl leaves of Arabidopsis were clipped after placing 10

apterous adult GPA on each leaf. Each setup was replicated ten times. Total GPA numbers within clip cages were counted after 48 h and the percentage settling was calculated.

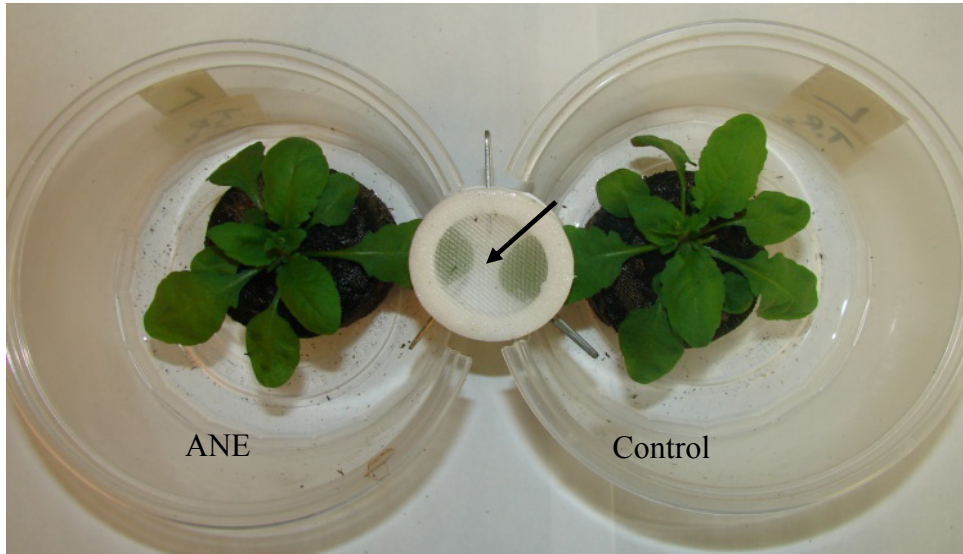


Figure 4.2 Paired choice test to observe *Myzus persicae* (GPA) settling of control and ANE treated Arabidopsis leaves after clipping. Arrow indicates the spot where the GPA was released in the clip cage.

4.3.5.3 PAIRED CHOICE EXPERIMENTS USING WHOLE ARABIDOPSIS PLANT

Paired choice experiment was conducted using whole Arabidopsis plant instead of clip cages. Paired choice experiments were carried out using methods described by Pegadaraju et al., (2007) with modifications. Rectangular plastic containers (13.5 X 9.0 cm) were used for potting Arabidopsis with peat pellets. The nearest leaf of ANE (1.0 g/L) and control plants in each replicate pair were spaced approximately 1 cm apart in these plastic containers. Twenty-five GPA were released on sides of the rectangular container which consists of one ANE treated and one control Arabidopsis. Each pair was replicated ten times. The number of GPA counted after 48 h and 72 h. The percentage settling of control vs. ANE was calculated.

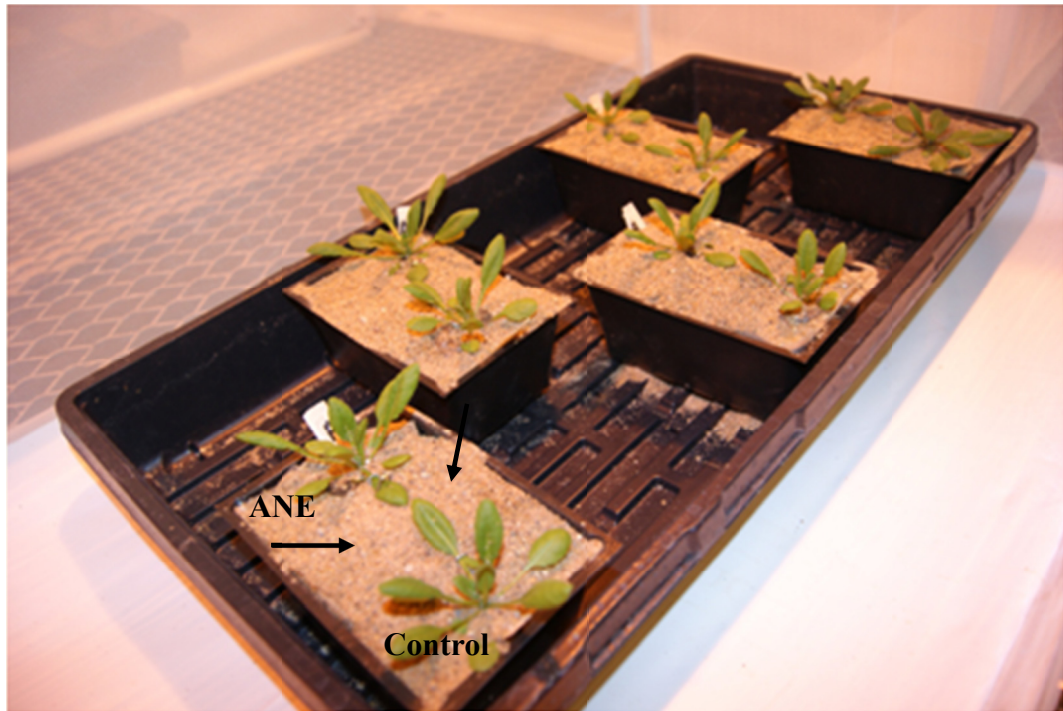


Figure 4.3 Paired choice test to observe *Myzus persicae* (GPA) settling on control and ANE treated whole Arabidopsis plants. Arrow indicates the place where the GPA was released.

4.3.5.4 EXPERIMENTAL DESIGN AND STATISTICAL ANALYSES

All data were checked to meet the three assumptions of the ANOVA tests. All choice experiments were conducted under a completely randomized design. ANOVA was performed to test the effects of ANE on percentage settling of GPA in Multiple-choice feeding-preference experiments. A paired t-test was performed to test the effects of ANE on percentage settling of GPA in paired choice experiments using clip cages. In paired choice experiment using whole Arabidopsis plants, repeated measures analyses were performed to test the ANE on percentage settling of GPA over time (PROC MIXED procedure in SAS 9.2 software).

4.3.6 ANE EFFECT ON PLANT TOLERANCE AGAINST GPA

4.3.6.1 MEASUREMENT OF FRESH WEIGHT AND ESTIMATION OF CHLOROPHYLL PIGMENTS

Soil drench application of either 1.0 g/L ANE or control treatments were conducted as in section 4.3.2. Fifteen adult GPA were released at the center of the rosettes of Arabidopsis. Fresh weight of all above ground parts of five Arabidopsis plants were measured prior to chlorophyll analyses. After taking the fresh weight, each Arabidopsis plant leaf samples infested with GPA were collected and analyzed for chlorophyll a, b and total chlorophyll during three different harvesting time points (8, 11, 14 days). Analysis of chlorophyll was carried out by the method described by Pegadaraju et al (2005). All extractions carried out at 4 °C under low light conditions. One hundred milligram of leaf sample (from second whorl) of *A. thaliana* were crushed until leaf tissues were turn into colorless using 1.0 ml of extraction buffer consisted of 85 % acetone and 15 % 1.0 M Tris-HCl (pH 8.0). The extract was centrifuged at 12, 000 x g for 5 min, at 4 °C. Supernatant was collected and diluted five times to measure the absorbance against the blank (consists of extraction buffer). Absorbance was measured at 664 nm, 647 nm using a microplate reader (BioTek Power XS2, VT, USA). Calculation of chlorophyll a, chlorophyll b and total chlorophyll was done by using the following formula described by Lichtenthaler (1987).

$$\text{Chlorophyll a} = 12.25 * A_{663} - 2.79 * A_{647}$$

$$\text{Chlorophyll b} = 21.50 * A_{647} - 5.10 * A_{663}$$

$$\text{Total chlorophyll content} = \text{Chlorophyll a} + \text{Chlorophyll b}$$

4.3.6.2 EXPERIMENTAL DESIGN AND STATISTICAL ANALYSES

A plant tolerance study was conducted using a completely randomized design with five replicates for each treatment. All data were checked to meet the three assumptions of ANOVA and analyzed using repeated measures in PROC MIXED procedure in SAS 9.2 software ($\alpha = 0.5$) followed by Tukeys test.

4.3.7 VISUALIZATION OF CELL DAMAGE

Cell death visualization experiment was conducted to determine whether the senescence phenomenon was associated with the application of ANE. Arabidopsis constitutive expresser of *PR* gene5 (*CPR5*) mutant plant which can accumulate more salicylic acid (SA), and undergoes more cell death as well as ANE treated and control Arabidopsis Col-0 type plants were used. Soil drench applied to either 1.0 g/L ANE or inorganic control was used as treatments. A second whorl leaf of either the Arabidopsis ecotype Col-0 or the *CPR5* leaf was clipped using a clip cage with five apterous adult GPA. Leaf samples were taken seven days after release of GPA. All treatments were consisted of three replicates. Cell damage was visualized using a method described by Rate et al. (1999). The cellular clearing step was modified by using chloral hydrate solution. Lactophenol blue solution was prepared by mixing 10:10:10 mL; glycerol, lactic acid, phenol. Ten mg of trypan blue powder was dissolved in 10.0 mL of distilled water and then added to lactophenol solution to a final concentration of 0.025%. Stained leaf samples were cleared by placing the leaf samples overnight in chloral hydrate solution. Chloral hydrate solution was prepared by adding 25.0 g of chloral hydrate to 10.0 mL of distilled water with constant stirring. Cleared leaf samples were mounted in 70 %

glycerol, and dead cells were observed using a dissecting microscope. Cell death was observed in all treatments.

4.3.8 EXPERIMENT ON RECOVERY OF ARABIDOPSIS FROM GPA DAMAGE AFTER REMOVAL OF GPA

GPA feeding reduces photosynthetic capacity and prolonged infestation can reduce biomass of plants. A recovery experiment was conducted to determine whether ANE treated plants can recover better following GPA infestation than non ANE treated plants. Soil drenches applications of either 1.0 g/L ANE or control solution were followed as in section 4.3.2. Fifteen adult GPA were placed at the center of rosettes of each Arabidopsis. Seven days after infestation, with GPA, all insects were removed carefully with a fine paint brush. Treatment of ANE or control was continued every seven days until harvesting the siliques. Dry weight of each Arabidopsis rosettes and total dry weight of siliques were measured at 16th day of after removing GPA.

4.3.8.1 EXPERIMENTAL DESIGN AND STATISTICAL ANALYSES

The experiment on recovery of Arabidopsis from GPA damage was conducted using a completely randomized design. All data were checked to meet the three assumptions of the ANOVA tests. ANOVA was performed to test effect on ANE on dry weight of each Arabidopsis plant and total dry weight of siliques from each plant. Results were analyzed using ANOVA at $\alpha = 0.05$ level by using Minitab 15.0.

4.3.9 QUANTITATIVE GENE ANALYSES OF ARABIDOPSIS AS AFFECTED BY ANE

4.3.9.1 ISOLATION OF RNA

Soil drench application of either 1.0 g/L ANE or control treatments were followed as in section 4.3.2. Fifteen GPA were released at the center of the rosettes of either ANE or inorganic control solution treated Arabidopsis plants. A similar setup was kept without GPA for treatment comparison. All the leaves from GPA infested and uninfested Arabidopsis plants were collected at 24, 48 and 72 h. Three plants were pooled as one biological replicate for analyses. Leaf samples were collected and snap frozen in liquid nitrogen and then lyophilized. Leaf samples were ground at 3000 rpm for 15 seconds using a Tomy MicroSmash™ MS-100 micro homogenizing system (Tokyo, Japan). RNA was extracted using Trizol (Invitrogen, USA) following manufactures instructions. Isolated RNA was quantified using a NanoDrop 2000 spectrophotometer (Thermo Scientific, USA). Isolated RNA quality was confirmed by visualizing RNA bands after resolving on 0.7% agarose gel.

4.3.9.2 PURIFICATION OF RNA AND CDNA SYNTHESIS

Isolated RNA was treated with RQ1 DNase (Promega Inc., USA) following the instructions provided by the manufacturer. Purified RNA was reverse transcribed using a high capacity cDNA reverse transcript kit (Applied Biosystems, ON, Canada) following the instructions provided by the manufacturer.

4.3.9.3 REAL TIME PCR ANALYSES

Real time PCR was performed using StepOne™ Real-Time PCR System (Applied Biosystems, CA). Ten microliter of total reaction mixture contained 50 ng of cDNA, 20 ng of gene specific primers, 5 µL of 2X SYBR green reagent and 2.5 µL DEPC water.

Reaction products were confirmed with the melt curve and running a 1 % agarose gel. Transcript levels of each gene were normalized to the expression of *ACT2* (actin 2) gene. Fold change for GPA infested Arabidopsis was relative to GPA uninfested control plants. *PAD4* (phytoalexin deficient 4) (Wang et al., 2010), *CLH1* (chlorophyllase1), *SAG21* (senescence associated gene 21), *SAG13* (senescence associated gene 13), *ARR5* (Arabidopsis response regulator 5) (Takei et al., 2004a) and *ACT2* (Takei et al., 2004b) were selected for quantitative PCR. Real Time PCR conditions for gene specific primers were as follows; heat activation at 95°C for 10 min, denaturation at 95°C for 15 s, annealing and final extension at 60°C for 1 min followed by 40 cycles. Relative transcript levels were analyzed using the $2^{-\Delta\Delta Ct}$ method (Pfaffl, 2001). The gene specific primers used in this study are given in Table 4.1.

Table 4.1 Primer sequences used in the study

Gene	Locus	Gene specific primers
<i>AtCLH1</i>	At1g19670	F5' GAGTGTAAGGCGACGAAAGC-3' R5' AGAAACGCAACCACAATTCC-3'
<i>AtSAG21</i>	At4g02380	F5' CATTCCTCGGATATATCTCTCCTT-3' R5' TTCTTGAAAAGAGAGAAAACAGACTTT-3'
<i>AtSAG13</i>	At2g29350	F5' AGGAAACTCAACATCCTCGTC-3' R5' GCTGACTCGAGATTTGTAGCC-3'
<i>AtARR5</i>	At3g48100	F5' TTAAAAGCTCAAAGATTCACACACA-3' R5' ATCAGCAAAGAAGCCGTAATGT-3'
<i>AtPAD4</i>	At3g52430	F5' TCTTAGCCGAGCCACTCGAC-3' R5' TTCTCGCCTCATCCAACCAC-3'
<i>AtACT2</i>	At3g18780	F5' TTGTTTGTTCATTTCCCTTTTTG-3' R5' GCAGACGTAAGTAAAACCCAGAGA-3'

4.4 RESULTS

4.4.1 NO-CHOICE EXPERIMENTS USING CLIP CAGES

No-choice experiments were conducted to test antibiosis mediated resistance in *Arabidopsis* following leaf spray and soil drench treatment of ANE. There were no significant effect of ANE treatment on total GPA numbers, whether by leaf spray ($F = 0.45$; $df = 3, 30$; $P = 0.72$) and soil drench ($F = 0.80$; $df = 3, 26$; $P = 0.50$).

4.4.2 NO-CHOICE EXPERIMENTS USING WHOLE ARABIDOPSIS

Compared to water controls, GPA numbers were higher in leaf spray applications ($F = 5.58$; $df = 3, 16$; $P < 0.01$) and soil drench applications ($F = 5.15$; $df = 3, 16$; $P = 0.01$) of ANE. For both application methods, ANE concentrations (1.0 and 2.0 g/L) had significantly higher GPA numbers ($P < 0.05$), but GPA numbers for the 3.0 g/L were not significantly different as compared to control (Figure 4.4).

Compared to the inorganic control, GPA numbers were higher in the soil drench application of ANE 1.0 g/L ($F = 8.73$; $df = 1, 8$; $P = 0.02$).

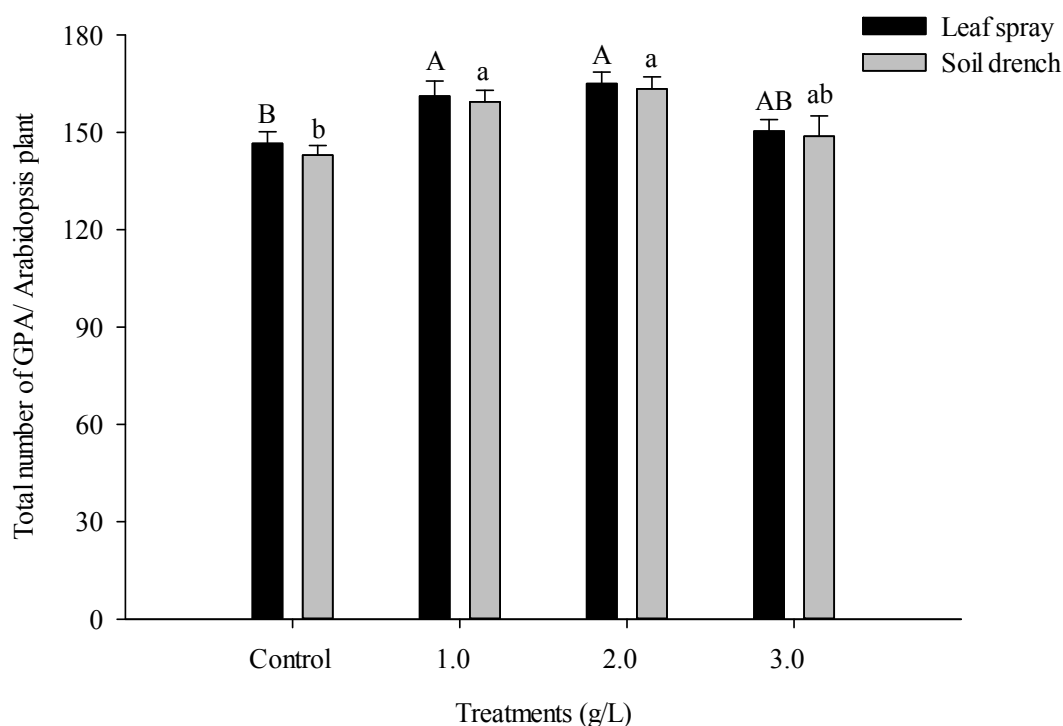


Figure 4.4 Comparison of total *Myzus persicae* (\pm SE) (GPA) five days after release of 15 adult GPA each on Arabidopsis plants following leaf spray and soil drench treatment of *Ascophyllum nodosum* extract (ANE). Bars with same case different letters indicate that each treatment is significantly different (Tukey's test, $\alpha = 0.05$)

4.4.3 ANE EFFECT ON GPA SETTLING

In multiple-choice feeding-preference experiments, there were no significant effects of ANE on percentage settling of GPA for both application methods of ANE: leaf spray ($F = 0.79$; $df = 4, 20$; $P = 0.55$) and soil drench ($F = 1.40$; $df = 4, 20$; $P = 0.27$).

In paired choice experiments using clip cages, there were no significant differences between control plants and those treated with ANE in the number of GPA recovered, whether for the leaf spray ($P = 0.63$) or soil drench ($P = 0.53$) application methods.

In whole plant paired choice experiments, there were no significant differences between control plants and those treated with ANE in the number of settling GPA (leaf

spray, $F = 0.96$; $df = 1, 18$; $P = 0.34$; soil drench ($F = 0.82$; $df = 1, 18$; $P = 0.38$). There was no ANE effect on GPA settling over time (leaf spray, $F = 0.01$; $df = 1, 18$; $P = 0.91$; soil drench, $F = 0.08$; $df = 1, 18$; $P = 0.78$) and between treatment * time (leaf spray, $F = 0.44$; $df = 1, 18$; $P = 0.51$; soil drench $F = 1.51$; $df = 1, 18$; $P = 0.24$).

4.4.4 EFFECT OF ANE ON CHLOROPHYLL A, B AND TOTAL CHLOROPHYLL CONTENT AND FRESH WEIGHT OF ARABIDOPSIS INFESTED WITH GPA

ANE treatment did not affect the level of chlorophyll 'a' ($F = 0.88$; $df = 1, 8$; $P = 0.38$), chlorophyll 'b' ($F = 2.37$; $df = 1, 8$; $P = 0.16$) and total chlorophyll ($F = 1.24$; $df = 1, 8$; $P = 0.30$). Chlorophyll in both ANE treated and control plants were significantly reduced over time with GPA infestation, chlorophyll a ($F = 39.62$; $df = 2, 16$; $P < .01$); chlorophyll b ($F = 36.62$; $df = 2, 16$; $P < .01$) and total chlorophyll ($F = 41.16$; $df = 2, 16$; $P < .01$). There were no significant interaction effects between treatment*harvest time on chlorophyll 'a' ($F = 0.28$; $df = 2, 16$; $P = 0.76$); chlorophyll 'b' ($F = 0.04$; $df = 2, 16$; $P = 0.96$) and total chlorophylls ($F = 0.13$; $df = 2, 16$; $P = 0.88$).

Application of ANE reduced the total fresh weight loss in Arabidopsis following GPA infestation ($F = 7.27$; $df = 1, 8$; $P = 0.03$, Figure 4.5). Biomass of both ANE and control were significantly reduced over time with GPA infestation ($F = 22.10$; $df = 2, 16$; $P < 0.01$, Figure 4.5). However there were no significant interaction effects between treatment*harvesting time ($F = 0.11$; $df = 2, 16$; $P = 0.90$, Figure 4.5).

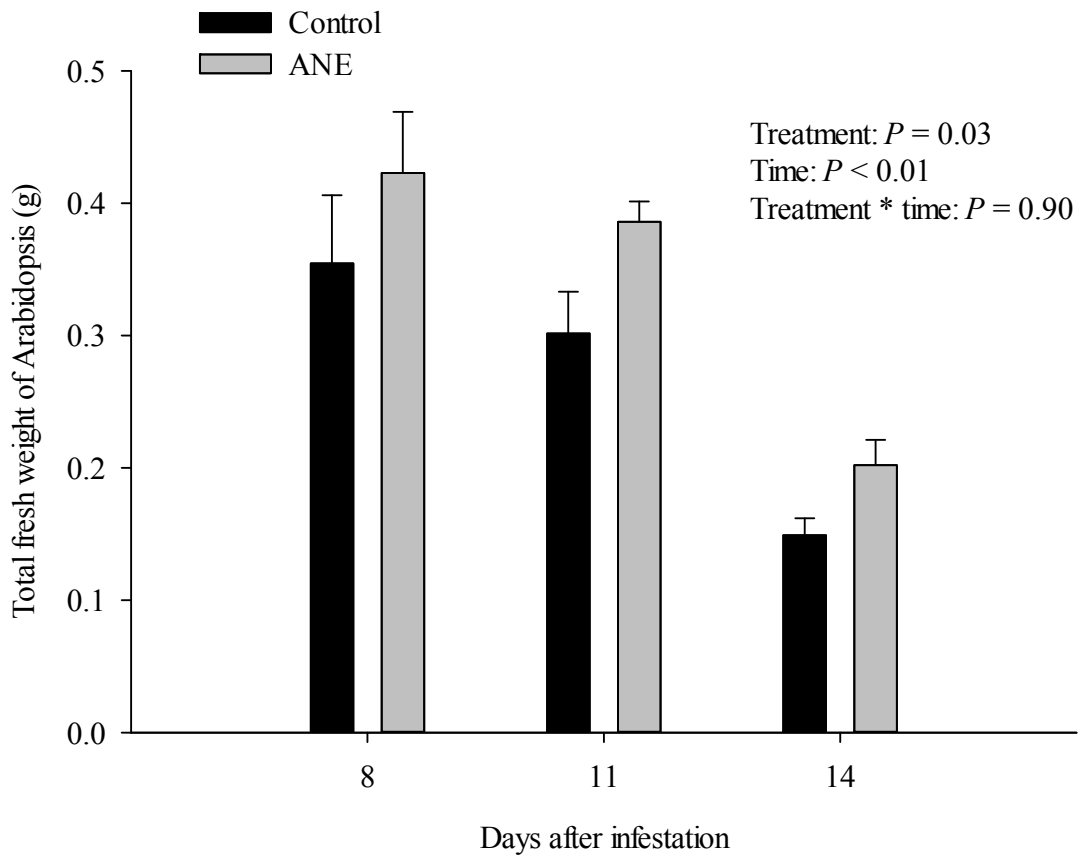


Figure 4.5 Comparison of total fresh weight (\pm SE) content in Arabidopsis with or without treatment with *Ascophyllum nodosum* extract (ANE) at 8, 11 and 14 days after *Myzus persicae* infestation. Overall, treatments are significant different ($\alpha = 0.05$).

4.4.5 DRY WEIGHT OF ROSETTES AND SILIQUES OF ARABIDOPSIS RECOVERY FOLLOWING GPA INFESTATION

In the experiment examining plant recovery after removal of GPA, there were no significant differences between dry weight of rosettes of ANE treated plants and control plants after 16 days of GPA recovery period ($F = 2.59$; $df = 1, 33$; $P = 0.12$). When siliques from Arabidopsis were weighed after a recovery following removal of a GPA infestation, ANE treated Arabidopsis had significantly higher seed yields than control plants ($F = 4.69$; $df = 1, 33$; $P = 0.04$, Figure 4.6).

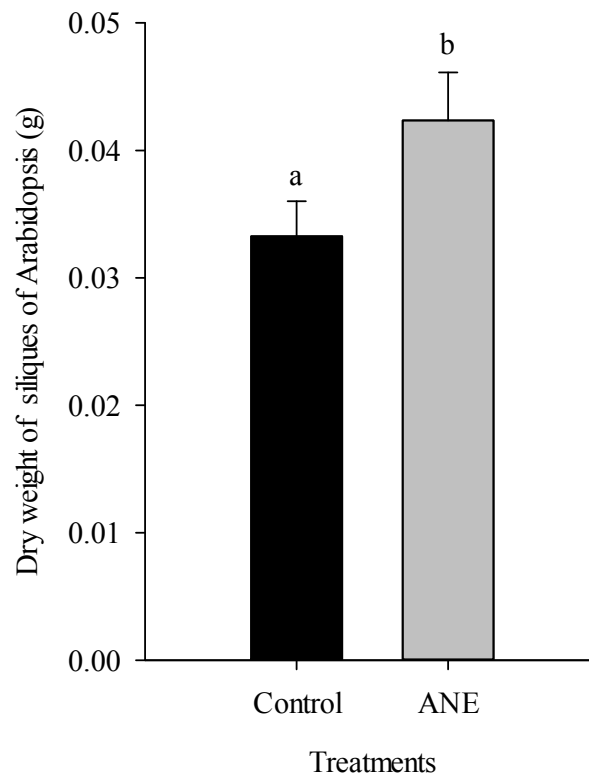


Figure 4.6 Comparison of total dry weight (\pm SE) of siliques of Arabidopsis with or without treatment with *Ascophyllum nodosum* extract (ANE) following 16 days Arabidopsis recovery. Different letters above them bars indicate that each treatment is significantly different (ANOVA, $\alpha = 0.05$)

4.4.6 VISUALIZATION OF CELL DAMAGE

Greater trypan staining was observed more in *CPR5* mutant plants (Figure 4.7.) than the control Arabidopsis Col-0 plants (Figure 4.8). ANE treated leaves exhibited much lower trypan blue staining (Figure 4.9).

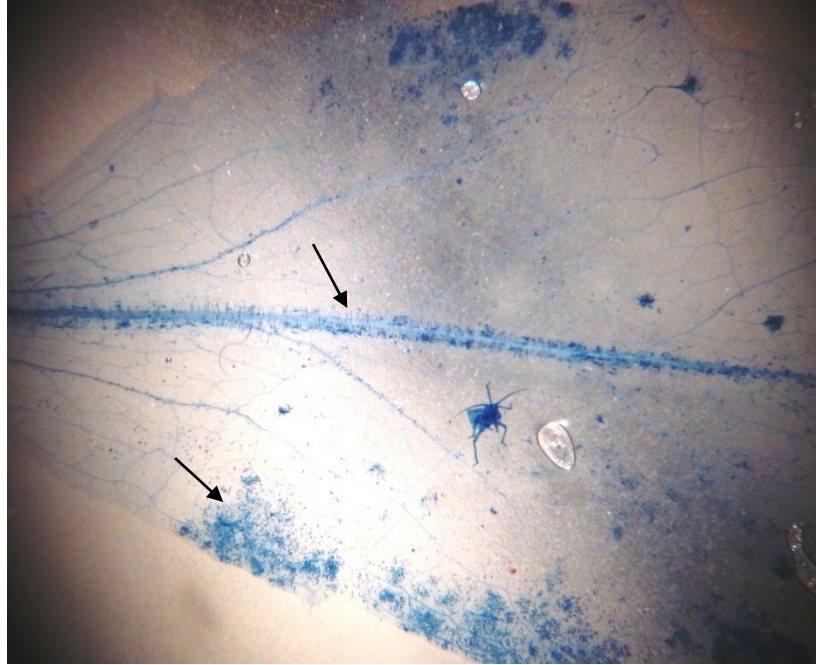


Figure 4.7 Trypan blue stained *Myzus persicae* infested Arabidopsis mutant *CPR5* leaf observed under dissection microscope. Arrows indicate the intensely stained clusters of dead cells.

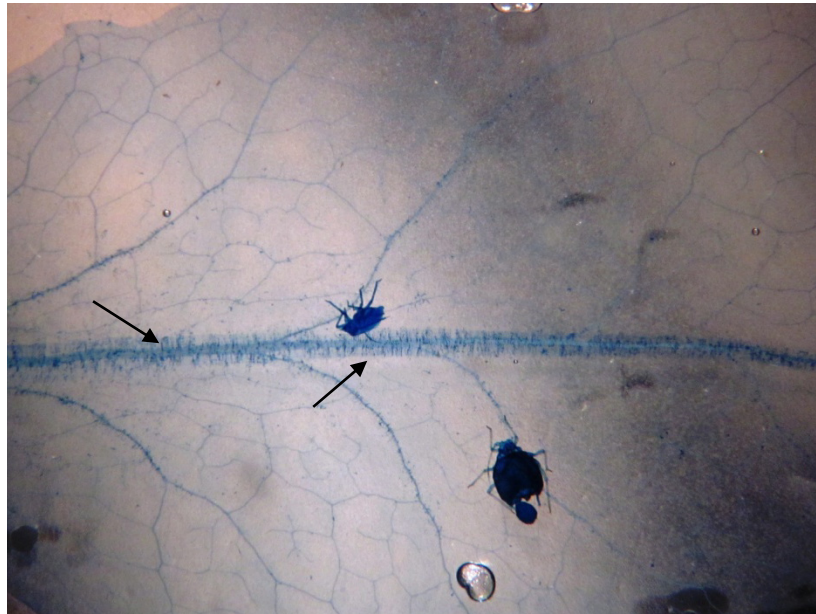


Figure 4.8 Trypan blue stained *Myzus persicae* infested Arabidopsis Col-0 (control) leaf observed under dissection microscope. Arrows indicate the intensely stained clusters of dead cells.

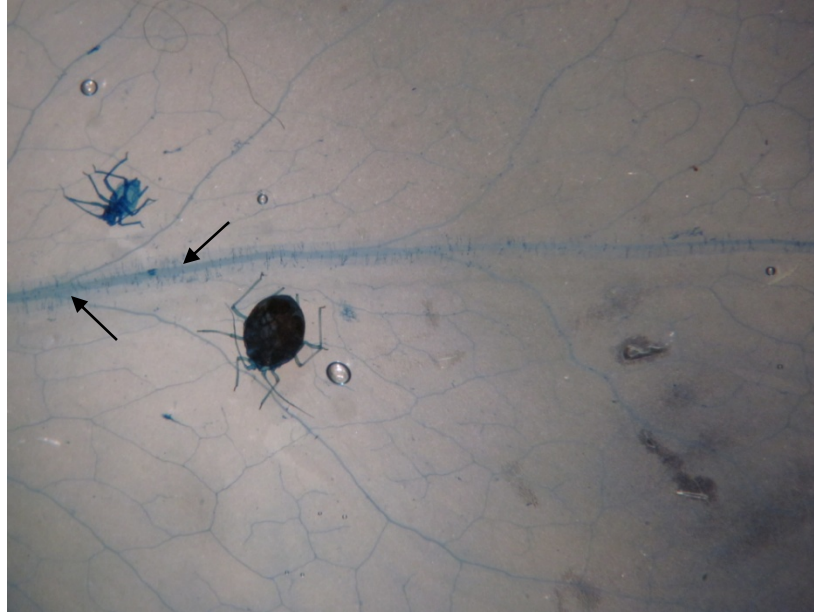


Figure 4.9 Trypan blue stained *Myzus persicae* infested *A. nodosum* extract (ANE) treated Arabidopsis Col-0 leaf observed under dissection microscope. Arrows indicate the intensely stained clusters of dead cells.

4.4.7 GENE EXPRESSION STUDY IN ARABIDOPSIS AS AFFECTED BY ANE

Observation of higher numbers of GPA and decreased cell death (section 4.4.6) in ANE treated plants suggests that ANE treatment may lead to delayed senescence in Arabidopsis. Further, gene expression studies were conducted to validate the phenotypic observations.

Expression of *ARR5*, a gene which is considered to be one of cytokinin primary responsive genes, was examined following the application of ANE (Figure 4.10). Approximately 50% increase in the expression of *ARR5* was observed after 24 and 72 h without GPA infestation as compared to uninfested control. Application of ANE also increased expression of *ARR5* in Arabidopsis during GPA infestation at 24 h (~ two fold). However, expression of *ARR5* decreased at 48 h and 72 h after GPA infestation.

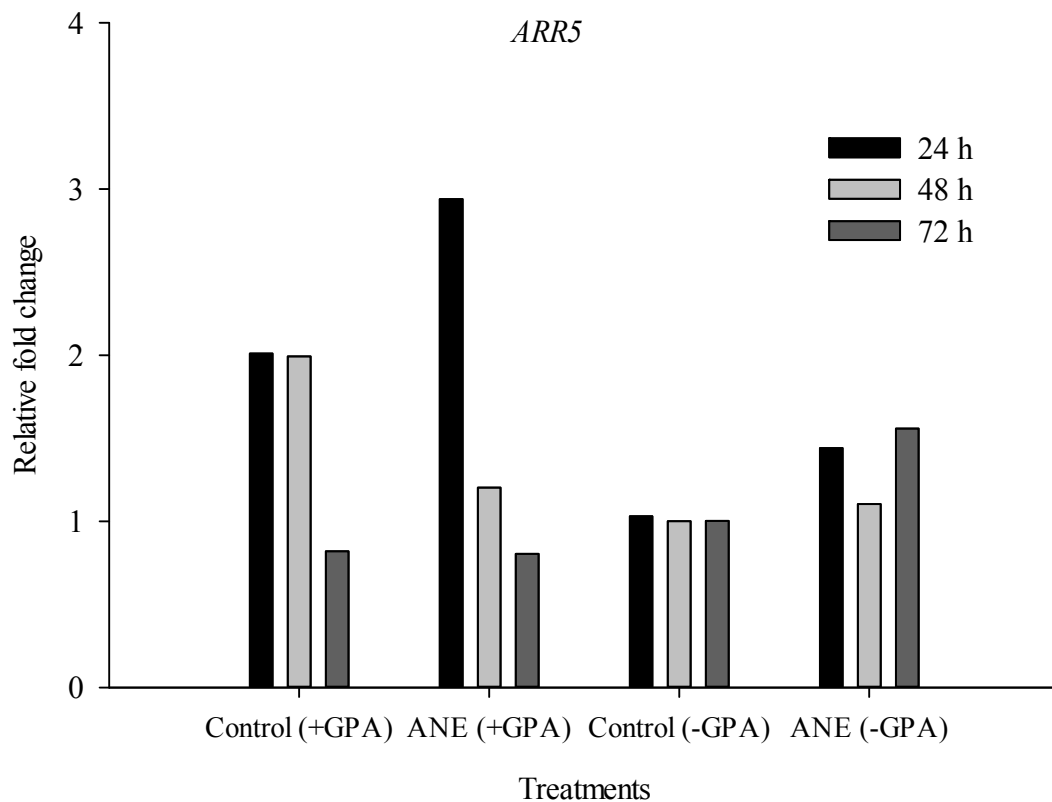


Figure 4.10 Quantitative expression of *ARR5* gene in Arabidopsis at 24, 48 and 72 h with and without infestation by *Myzus persicae*, or treatment with *Ascophyllum nodosum* extract (ANE)

CLHI was suppressed (~ half fold) at 48 and 72 h following GPA infestation (Figure 4.11). ANE did not affect the level of expression of *CLHI* at 24 and 72 h without GPA. However, ANE treatment suppressed the expression of *CLHI* at 48 h without GPA infestation.

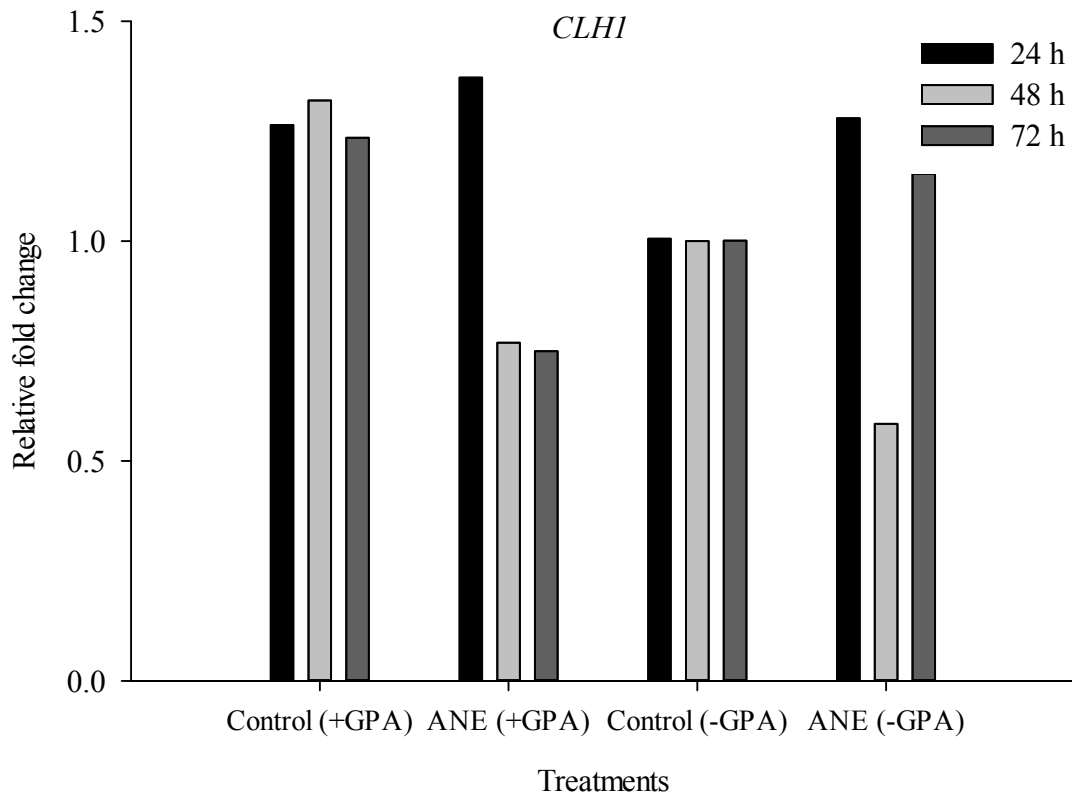


Figure 4.11 Quantitative expression of *CLHI* gene in Arabidopsis at 24, 48 and 72 h with and without infestation by *Myzus persicae*, or treatment with *Ascophyllum nodosum* extract (ANE)

Expression of *SAG21*, a gene which is involved in leaf senescence in Arabidopsis, was not affected by ANE treatment (with GPA infestation) at 24, 48 and 72 h (Figure 4.12). However, expression of *SAG21* was lowered (~ quarter fold) in ANE treated plants without GPA at 24, 48 and 72 h as compared to uninfested control plants.

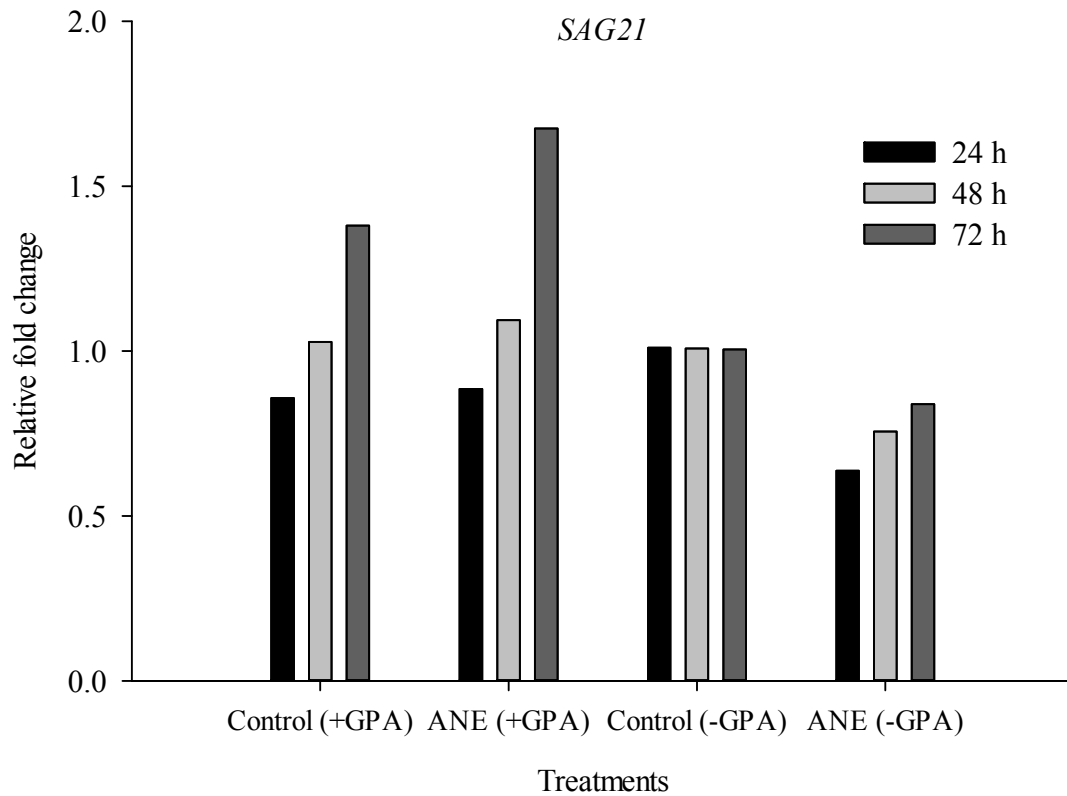


Figure 4.12 Quantitative expression of senescence associated gene 21 (*SAG21*) in Arabidopsis at 24, 48 and 72 h with and without infestation by *Myzus persicae*, or treatment with *Ascophyllum nodosum* extract (ANE)

Unlike results for *SAG21*, expression of *SAG13*, a gene which is involved in leaf senescence in Arabidopsis, was suppressed with ANE at 24, 48 h with GPA (Figure 4.13). However, *SAG13* expression was up regulated in ANE treatment at 72 h. Similar to *SAG21*, *SAG13* was suppressed at 48 and 72 h without GPA.

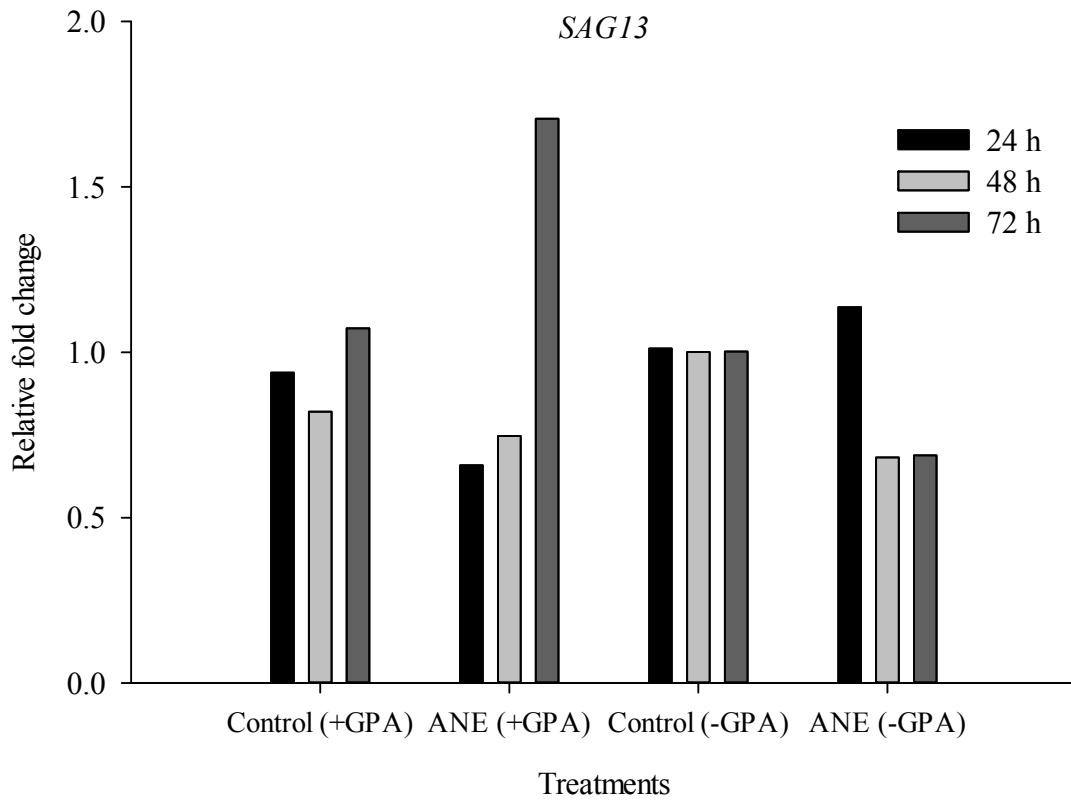


Figure 4.13 Quantitative expression of senescence associated gene 13 (*SAG13*) in Arabidopsis at 24, 48 and 72 h with and without infestation by *Myzus persicae*, or treatment with *Ascophyllum nodosum* extract (ANE)

Expression of *PAD4*, a gene which is involved in antixenosis mediated resistance in Arabidopsis against GPA (Pegadaraju et al. 2005) increased with increasing time of GPA infestation (Figure 4.14). However, application of ANE had no effect on gene expression. However, ANE increased the expression of *PAD4* (~ half fold) at 72 h after without GPA as compared to uninfested control plants.

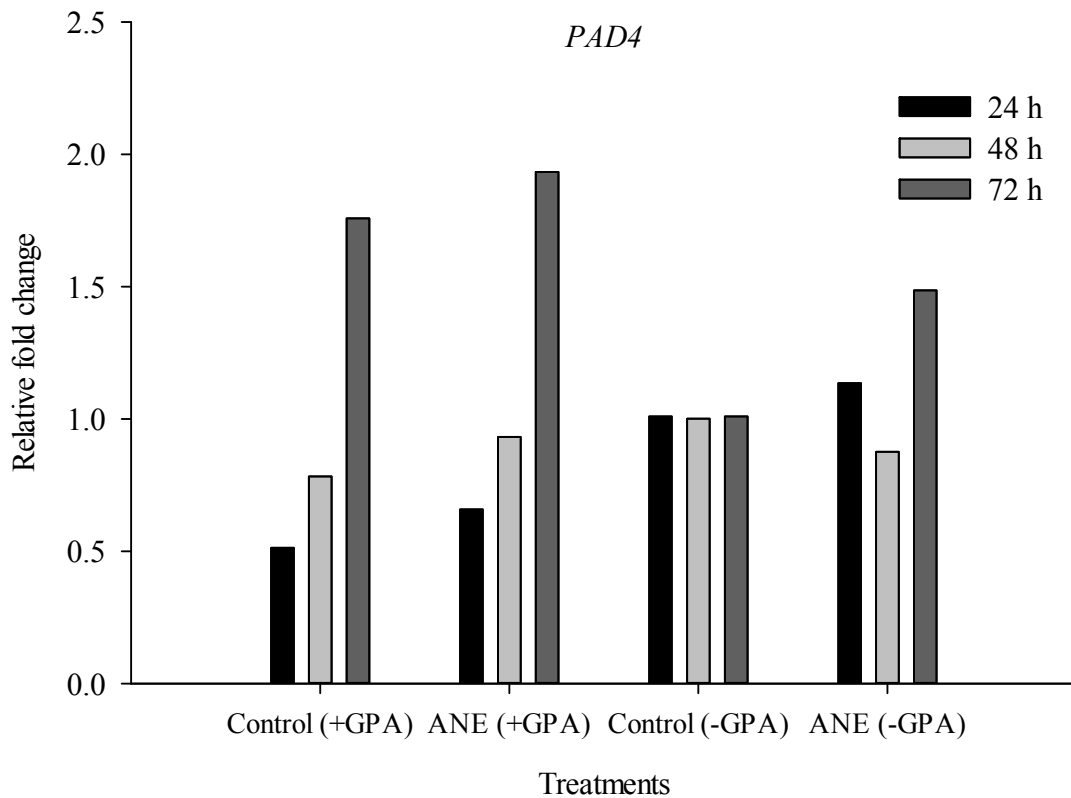


Figure 4.14 Quantitative expression of phytoalexin deficient 4 (*PAD4*) gene in Arabidopsis at 24, 48 and 72 h with and without infestation by *Myzus persicae*, or treatment with *Ascophyllum nodosum* extract (ANE)

4.5 DISCUSSION

This study demonstrated that green peach aphid (GPA), *Myzus persicae* numbers increased following application of ANE. However, in the first set of experiments with clip cages, there was no significant difference in GPA numbers between treated and untreated plants. Clip cages for insect experiments are advantageous in that they can be fixed to the same leaf of the plant and counting is easier than counting on a whole plant. However, there was no treatment effect on GPA reproduction in no-choice experiments using clip cages.

In no-choice experiments using whole plants, an increase in the GPA numbers with 1.0 and 2.0 g/L ANE concentrations occurred as compared to water control. However, the 3.0 g/L ANE concentration was not significantly different when compared to the control. This may be a result of high amounts of potassium (14-18%) and sodium (3.0-5.0%) in higher concentrations of ANE (Acadian Seaplants Limited, Canada). Since water was used as a control, a higher alkalinity may have affected the health of *Arabidopsis* and thereby GPA numbers did not increase with 3 g/L ANE treatment. Because inorganic or organic components present in the ANE extracts might have affected the response of aphids, I also used an inorganic control containing the same inorganic composition as in 1.0 g/L ANE. Since, higher numbers of GPA were observed in ANE treated plants, the effect observed was likely due to organic components present in ANE. The same type of inorganic control was used in a previous study to test the effect of organic components of seaweed extract on chlorophyll content of tomato, wheat, dwarf French bean, barley and maize, and no significant differences were found between inorganic control and water control (Blunden, 1997). There are few scientific reports on

the effects of seaweed extracts on insects. Plants treated with ANE exhibited resistance to the two-spotted red spider mite, *Tetranychus urticae* (Hankins and Hockey, 1990). When ANE was applied to broad beans, black bean aphid, *Aphid fabae* the population was reduced (Stephenson, 1966). Cytokinin containing ANE applied as a foliar spray resulted in heavier *Spodoptera exigua* larvae (Reitz and Trumble, 1996). As the fecundity of *S. exigua* larvae is correlated with body mass (Rothschild, 1969), it suggests that ANE could increase *S. exigua* pest populations (Reitz and Trumble, 1996). Similar effects were observed in no-choice experiments where significantly more GPA was found on *Arabidopsis* plants following ANE treatment.

The second set of experiments focused on whether or not ANE increases antixenosis mediated resistance in *Arabidopsis* when infested with GPA. No effect on GPA settling was observed in choice experiments. Initially, all five treatments (water, inorganic control and ANE-1.0, 2.0 and 3.0 g/L) were used in a multiple-choice feeding-preference experiment. There were no significant effects on GPA settling (sections 4.4.3) following either foliar or soil drench application of ANE. Because high variability was observed in these multiple-choice feeding preference experiments, subsequently a paired choice experiment was conducted using 1 g/L concentration of ANE and an inorganic control. However, there were also no significant effects on GPA settling following ANE treatment in the paired experiments. Gene expression studies were conducted to determine the mechanisms behind the phenotypic observations. *PAD4* gene, which is associated with camelexin synthesis, showed antixenosis mediated resistance in *Arabidopsis* against GPA (Pegadaraju et al., 2007; Pegadaraju et al., 2005). No differences in expression of *PAD4* gene were observed in ANE treated plants as

compared to controls. This is in agreement with phenotypic observations in the choice experiments. There were no significant differences in GPA preference to ANE treated plants as compared to control plants. However, there is some evidence of ANE affecting antixenotic resistance with other insects. Cytokinin containing ANE increased feeding preference for tomato foliage by *Spodoptera exigua* larvae following root application, although foliar application did not alter the feeding preference (Reitz and Trumble, 1996). In another study, ANE deterred the herbivorous snail, *Littorina littorea*, when it was provided an artificial diet containing polyphenols (Geiselman and McConnell, 1981). ANE has polyphenol compounds in its extracts, which might provide chemical defenses against herbivores (Geiselman and McConnell, 1981).

Since neither antibiosis nor antixenosis mediated resistance was observed in *Arabidopsis* infested with GPA, the next sets of experiments focused on plant tolerance. The plant tolerance study consisted of time course analyses of fresh weight (g), chlorophyll a, b, and total chlorophyll ($\mu\text{g}/\text{mg}$ fresh weight). There were no significant differences in chlorophyll content between ANE and control plants at any harvest time. However, treated plants maintained good biomass under GPA infestation. Since the control treatment contained all the same inorganic mineral constituents as ANE, it is likely that the effects are largely due to the organic fraction of the extracts. This might be associated with beneficial growth due to plant growth regulators present in ANE. In the gene experiments, higher cytokinins were observed following ANE treated GPA infested plants at 24 h, and these are considered to be one of the plant growth regulators activated following ANE treatment (Khan et al., 2011). Cytokinins play a major role in reducing chlorophyll loss under stress (De Oliveira et al., 2008), and delaying the senescence

process (Gan and Amasino, 1995). A gene (*IPT*) encoding for isopentenyltransferase enzyme which is involved in cytokinin biosynthesis, was studied using a senescence specific promoter P_{SAG12} -*IPT* in tobacco plants and it was reported that endogenous cytokinins can regulate the leaf senescence (Gan and Amasino, 1996). Betaines are also present in seaweeds and increased the chlorophyll content of tomato, wheat, barley and maize (Blunden, 1997).

In summary, increased GPA numbers could be partially due to delayed senescence in Arabidopsis. ANE treated plants had a decrease in cell death, and suppression of *SAG* genes. ANE effect on chlorophyll was not statistically significant. However, suppression of chlorophyllase gene 1 (*CLH1*) was observed. Decreased cell death and suppression of *SAG* genes suggests that ANE may delay plant senescence, resulting in increased GPA numbers in treated plants. Senescence is one of the key characteristics which enhance resistance to GPA (Pegadaraju et al., 2005). The Arabidopsis mutant *PAD4* had delayed senescence and had decreased cell death due to GPA feeding (Pegadaraju et al., 2005). In contrast, the hypersenescent mutant, Arabidopsis constitutive expresser of *PR* gene5 (*CPR5*) had greatly reduced aphid numbers, while exhibiting a much higher degree of visible cell death (Pegadaraju et al., 2005). Delaying leaf senescence may be one way of recovery from insect herbivory (Meyer, 1998). This paralleled the GPA recovery experiment and it was found that significantly high seed yield was observed in ANE applied plants. Less cell death due to GPA infestation in ANE treated plants may result in faster recovery than control.

CHAPTER 5: GENERAL CONCLUSIONS

Minimizing losses caused by insect pest would increase crop production; an important goal to feed the increasing population without increasing the use of arable land area (Oerke and Dehne, 2004). Traditional use of pesticides is still important in pest management, but the usefulness of pesticides in agriculture is limited by insect resistance and potentially harmful effects on the environment. Use of biological elicitors to induce resistance in crop plants has potential to control insect pests. *Ascophyllum nodosum* extracts (ANE) contains several elicitors that activate plant defences (Vera et al., 2011). Further, ANE enhances the growth and development of crop plants and imparts resistance to biotic and abiotic stresses (Khan et al., 2009). The objectives of this research were to evaluate the effect of ANE on growth of plants and then examine the effect of ANE on resistance/ tolerance of Arabidopsis towards GPA, a plant-insect model. I also wanted to examine the molecular changes in Arabidopsis as affected by ANE treatment on GPA infested plants.

There was a significant effect of ANE on dry weight and length of the inflorescence and dry weight of siliques following leaf treatment. Fresh weight, dry weight and length of inflorescence did not change following soil drench application of ANE. However, ANE application through both soil and foliage at the same time might be a more effective method of application. Since an inorganic control was used, increase in seed yield may be an effect of organic compounds present in the extracts. This might possibly be due to different plant growth regulators which are acting at different stages of growth in the Arabidopsis plant. Therefore detail quantitative chemical analysis of plant

growth regulators following treatment with ANE would facilitate to clear understanding effects of ANE on plants. Further, the results of this study can lead to further investigation in the future, to evaluate the field efficacy of ANE application on economically important crop species.

In the second set of experiments, The ANE effect on GPA was evaluated through three different insect resistance mechanisms; antibiosis, antixenosis and tolerance. ANE did not induce either antibiosis or antixenosis mediated resistance in Arabidopsis against GPA. Moreover, ANE treated plants exhibited a greater number of colonizing GPA. However, ANE enhances tolerance to biomass loss following GPA infestation. Since inorganic control was used, enhanced growth effect might be an effect of organic compounds present in the ANE extracts. Therefore, further research will be required to determine the different organic compounds in ANE which lead to enhance the plant tolerance to insects. This will provide a better strategy to manage insect populations in agriculture fields without increasing the resistant in insect pest populations. Further this could help to develop new seaweed extract products for eco-friendly management of insect pests.

REFERENCES

- Alborn HT, Jones TH, Stenhagen GS, Tumlinson JH (2000) Identification and synthesis of volicitin and related components from beet armyworm oral secretions. *Journal of Chemical Ecology* 26: 203-220
- Alfaro-Tapia A, Verdugo JA, Astudillo LA, Ramírez CC (2007) Effect of epicuticular waxes of poplar hybrids on the aphid *Chaitophorus leucomelas* (Hemiptera: Aphididae). *Journal of Applied Entomology* 131: 486-492
- Allen VG, Pond KR, Saker KE, Fontenot JP, Bagley CP, Ivy RL, Evans RR, Schmidt RE, Fike JH, Zhang X, Ayad JY, Brown CP, Miller MF, Montgomery JL, Mahan J, Wester DB, Melton C (2001) Tasco: influence of a brown seaweed on antioxidants in forages and livestock - A review. *Journal of Animal Science* 79: e21-31
- Ashikari M, Sakakibara H, Lin S, Yamamoto T, Takashi T, Nishimura A, Angeles ER, Qian Q, Kitano H, Matsuoka M (2005) Cytokinin oxidase regulates rice grain production. *Science* 309: 741-745
- Beckett RP, Staden J (1990) The effect of seaweed concentrate on the yield of nutrient stressed wheat. *Botanica Marina* 33: 147-152
- Blackman RL, Eastop VF (2000) *Aphids on the World's Crops: An identification and information Guide*, 2nd edition. Wiley & Sons Ltd, Chichester, 466 pp
- Blunden G, Jenkins T, Liu YW (1997) Enhanced leaf chlorophyll levels in plants treated with seaweed extract. *Journal of Applied Phycology* 8: 535-543
- Bowling SA, Clarke JD, Liu Y, Klessig DF, Dong X (1997) The *cpr5* mutant of *Arabidopsis* expresses both *NPR1*-dependent and *NPR1*-independent resistance. *The Plant Cell* 9: 1573-1584
- Boyes DC, Zayed AM, Ascenzi R, McCaskill AJ, Hoffman NE, Davis KR, Görlach J (2001) Growth stage-based phenotypic analysis of *Arabidopsis*: A model for high throughput functional genomics in plants. *The Plant Cell* 13: 1499-1510
- Brandt RN, Lamb RJ (1994) Importance of tolerance and growth rate in the resistance of oilseed rapes and mustards to flea beetles, *Phyllotreta cruciferae* (Goeze) (Coleoptera: Chrysomelidae). *Canadian Journal of Plant Science* 74: 169-176

- Bruce TJA, Matthes MC, Chamberlain K, Woodcock CM, Mohib A, Webster B, Smart LE, Birkett MA, Pickett JA, Napier JA (2008) cis-Jasmone induces Arabidopsis genes that affect the chemical ecology of multitrophic interactions with aphids and their parasitoids. *Proceedings of the National Academy of Sciences* 105: 4553-4558
- Buchanan-Wollaston V (1997) The molecular biology of leaf senescence. *Journal of Experimental Botany* 48: 181-199
- Cabrera y Poch HL, Ponz F, Fereres A (1998) Searching for resistance in *Arabidopsis thaliana* to the green peach aphid *Myzus persicae*. *Plant Science* 138: 209-216
- Castle SJ, Mowry TM, Berger PH (1998) Differential settling by *Myzus persicae* (Homoptera: Aphididae) on various virus infected host plants. *Annals of the Entomological Society of America* 91: 661-667
- Celik I, Ortas I, Kilic S (2004) Effects of compost, mycorrhiza, manure and fertilizer on some physical properties of a chromoxerert soil. *Soil and Tillage Research* 78: 59-67
- Chamngpol S, Willekens H, Moeder W, Langebartels C, Sandermann H, Montagu MV, Inze D, Camp WV (1998) Defense activation and enhanced pathogen tolerance induced by H₂O₂ in transgenic tobacco. *Proceedings of the National Academy of Sciences* 95: 5818-5823
- Chaves ALS, Mello-Farias PCD (2006) Ethylene and fruit ripening: from illumination gas to the control of gene expression, more than a century of discoveries. *Genetics and Molecular Biology* 29: 508-515
- Chen H, Wilkerson CG, Kuchar JA, Phinney BS, Howe GA (2005) Jasmonate-inducible plant enzymes degrade essential amino acids in the herbivore midgut. *Proceedings of the National Academy of Sciences* 102: 19237-19242
- Chevolot L, Mulloy B, Ratiskol J, Foucault A, Collic-Jouault S (2001) A disaccharide repeat unit is the major structure in fucoidans from two species of brown algae. *Carbohydrate Research* 330: 529-535
- Choi HW, Hwang BK (2011) Systemic acquired resistance of pepper to microbial pathogens. *Journal of Phytopathology* 159: 393-400
- Cluzet S, Torregrosa C, Jacquet C, Lafitte C, Fournier J, Mercier L, Salamagne S, Briand X, Esquerre-Tugaye MT, Dumas B (2004) Gene expression profiling and protection of *Medicago truncatula* against a fungal infection in response to an elicitor from green algae *Ulva* spp. *Plant, Cell and Environment* 27: 917-928

- Cohen JE (2003) Human population: the next half century. *Science* 302: 1172-1175
- Craigie J (2010) Seaweed extract stimuli in plant science and agriculture. *Journal of Applied Phycology* 23: 371-393
- Crouch, IJ (1990) The effect of seaweed concentrate on plant growth. University of Natal, Pietermaritzburg, South Africa
- Crouch IJ, Staden J (1993) Effect of seaweed concentrate from *Ecklonia maxima* (Osbeck) Papenfuss on *Meloidogyne incognita* infestation on tomato. *Journal of Applied Phycology* 5: 37-43
- Crouch IJ, Staden J (1992) Effect of seaweed concentrate on the establishment and yield of greenhouse tomato plants. *Journal of Applied Phycology* 4: 291-296
- Crouch IJ, Beckeu RP, Van Staden J (1990) Effect of seaweed concentrate on the growth and mineral nutrition of nutrient-stressed lettuce. *Journal of Applied Phycology* 2: 269-272
- Davey JE, Van Staden J (1979) Cytokinin activity in *Lupinus albus* L. IV. Distribution in seeds. *Plant Physiology* 63: 873-877
- Davey JE, Van Staden J (1978) Cytokinin activity in *Lupinus albus*. III. Distribution in fruits. *Physiology* 43: 87-93
- Davies, PJ (2010) The plant hormones: their nature, occurrence, and functions. In: Davies, P. J. (Ed.), *Plant Hormones: biosynthesis, signal transduction, action*. Springer, Dordrecht, 1-15 pp
- Davies PJ (1995) *Plant hormones: Physiology, biochemistry, and molecular biology*, Kluwer Academic Publishers, Dordrecht, 836 pp
- Dawson GW, Griffiths DC, Hassanali A, Pickett JA, Plumb RT, Pye BJ, Smart LE, Woodcock CM (1986) Antifeedants: a new concept for control of barley yellow dwarf virus in winter cereals. *Proceedings of British Crop Protection Conference - Pests and Diseases* 3: 1001-1008
- De Oliveira LM, Paiva R, Santana JRFd, Alves E, Nogueira RC, Pereira FD (2008) Effect of cytokinins on in vitro development of autotrophism and acclimatization of *Annona glabra* L. *In Vitro Cellular and Developmental Biology - Plant* 44: 128-135

- De Vos M, Cheng WY, Summers HE, Raguso RA, Jander G (2010) Alarm pheromone habituation in *Myzus persicae* has fitness consequences and causes extensive gene expression changes. *Proceedings of the National Academy of Sciences* 107: 14673-14678
- De Vos M, Kim JH, Jander G (2007) Biochemistry and molecular biology of Arabidopsis-aphid interactions. *Bioessays* 29: 871-883
- De Vos M, Van Oosten VR, Van Poecke RMP, Van Pelt JA, Pozo MJ, Mueller MJ, Buchala AJ, Métraux JP, Van Loon LC, Dicke M, Pieterse CM (2005) Signal signature and transcriptome changes of Arabidopsis during pathogen and insect attack. *Molecular Plant-Microbe Interactions* 18: 923-937
- Deol GS, Reese JC, Gill BS, Wilde GE, Campbell LR (2001) Comparative chlorophyll losses in susceptible wheat leaves fed upon by Russian wheat aphids or green bugs (Homoptera: Aphididae). *Journal of Kansas Entomological Society* 74: 192-198
- Dixon OAG, Bramel-Cox PJ, Reese JC, Harvey TL (1990) Mechanisms of resistance and their interactions in twelve sources of resistance to biotype E greenbug (Homoptera: Aphididae) in sorghum. *Journal of Economic Entomology* 83: 234-240
- Dobromilska R, Mikiciuk M, Gubarewicz K (2008) Evaluation of cherry tomato yeilding and fruit mineral composition after using of Bio-algeen S-90 preparation. *Journal of Elementology* 13: 491-499
- Döring T, Chittka L (2007) Visual ecology of aphids - a critical review on the role of colours in host finding. *Arthropod-Plant Interactions* 1: 3-16
- Du B, Zhang W, Liu B, Hu J, Wei Z, Shi Z, He R, Zhu L, Chen R, Han B, He G (2009) Identification and characterization of *Bph14*, a gene conferring resistance to brown planthopper in rice. *Proceedings of the National Academy of Sciences* 106: 22163-22168
- Duffus JE, Gold AH (1965) Transmission of beet western yellows virus by aphids feeding through a membrane. *Virology* 27: 388-390
- Featonby-Smith BC (1984) Cytokinins in *Ecklonia maxima* and the effect of seaweed concentrate on plant growth. Ph.D thesis, University of Natal, Pietermaritzburg
- Featonby-Smith BC, Van Staden J (1983) The effect of seaweed concentrate on the growth of tomato plants in nematode-infested soil. *Scientia Horticulturae* 20: 137-146

- Feys BJ, Moisan LJ, Newman MA, Parker JE (2001) Direct interaction between the Arabidopsis disease resistance signaling proteins, *EDS1* and *PAD4*. *EMBO Journal* 20: 5400-5411
- Frett JJ, McCardell R (1990) Timing of cytokinin mediated shoot initiation. *HortScience* 25: 1108
- Gan S, Amasino RM (1996) Cytokinins in plant senescence: from spray and pray to clone and play. *BioEssays* 18: 557-565
- Gan S, Amasino RM (1995) Inhibition of leaf senescence by autoregulated production of cytokinin. *Science* 270: 5244
- Geiselman JA, McConnell OJ (1981) Polyphenols in brown algae *Fucus vesiculosus* and *Ascophyllum nodosum*: chemical defenses against the marine herbivorous snail, *Littorina littorea*. *Journal of Chemical Ecology* 7: 1115-1133
- Gibson RW, Pickett JA (1983) Wild potato repels aphids by release of aphid alarm pheromone. *Nature* 302: 608-609
- Glazebrook J, Zook M, Mert F, Kagan I, Rogers EE, Crute IR, Holub EB, Hammerschmidt R, Ausubel FM (1997) Phytoalexin-deficient mutants of Arabidopsis reveal that *PAD4* encodes a regulatory factor and that four *PAD* genes contribute to downy mildew resistance. *Genetics* 146: 381-392
- Godfray HCJ, Beddington JR, Crute IR, Haddad L, Lawrence D, Muir JF, Pretty J, Robinson S, Thomas SM, Toulmin C (2010) Food security: the challenge of feeding 9 billion People. *Science* 327: 812-818
- Guerrieri E, Digilio MC (2008) Aphid-plant interactions: a review. *Journal of Plant Interactions* 3: 223-232
- Hanhimäki S (1989) Induced resistance in mountain birch: defence against leaf-chewing insect guild and herbivore competition. *Oecologia* 81: 242-248
- Hankins SD, Hockey HP (1990) The effect of a liquid seaweed extract from *Ascophyllum nodosum* (Fucales, Phaeophyta) on the two-spotted red spider mite *Tetranychus urticae*. *Hydrobiologia* 204-205: 555-559
- Hammond-Kosack KE, Parker JE (2003) Deciphering plant-pathogen communication: fresh perspectives for molecular resistance breeding. *Current Opinion in Biotechnology* 14: 177-193
- Hare PD, Van Staden J (1997) The molecular basis of cytokinin action. *Plant Growth Regulation* 23: 41-78

- Heng-Moss TM, Baxendale FP, Riordan TP, Foster JE (2002) Evaluation of buffalograss germplasm for resistance to *Blissus occiduus* (Hemiptera: Lygaeidae). *Journal of Economic Entomology* 95: 1054-1058
- Howard RJ, Garland JA, Seaman WL, eds (1994) Diseases and pests of vegetable crops in Canada. The Canadian Phytopathological Society and the Entomological Society of Canada, 554 pp
- Hunt EJ, Pritchard J, Bennett MJ, Zhu X, Barrett DA, Allen T, Bale JS, Newbury HJ (2006) The *Arabidopsis thaliana/ Myzus persicae* model system demonstrates that a single gene can influence the interaction between a plant and a sap-feeding insect. *Molecular Ecology* 15: 4203-4213
- Jarvis JL, Russell WA, Campbell JE, Guthrie WD (1991) Level of resistance in maize to prevent or reduce yield losses by second-generation European corn borers. *Maydica* 36: 267-273
- John CR, Schwenke JR (1994) Importance and quantification of plant tolerance in crop pest management programs for aphids: greenbug resistance in sorghum. *Journal of Agricultural Entomology* 11: 255-270
- Karban R, Baldwin I (1997) Induced responses to herbivory. University of Chicago press, Chicago. 330 pp
- Kariola T, Brader G, Li J, Palva ET (2005) Chlorophyllase 1, a damage control enzyme, affects the balance between defense pathways in plants. *The Plant Cell* 17: 282-294
- Kennedy J, Day M, Eastop VF (1962) A conspectus of aphids as vector of plant viruses. Commonwealth Institute of Entomology, London, 114 pp
- Khan W, Hiltz D, Critchley A, Prithiviraj B (2011) Bioassay to detect *Ascophyllum nodosum* extract-induced cytokinin-like activity in *Arabidopsis thaliana*. *Journal of Applied Phycology* 23: 409-414
- Khan W, Rayirath U, Subramanian S, Jithesh M, Rayorath P, Hodges D, Critchley A, Craigie J, Norrie J, Prithiviraj B (2009) Seaweed extracts as biostimulants of plant growth and development. *Journal of Plant Growth Regulation* 28: 386-399
- Kieber JJ (2002) Cytokinins. In *The Arabidopsis book*. Somerville C, Meyerowitz E, Rockville, MD (eds) The American Society of Plant Biologists, <http://www.aspb.org/publications/arabidopsis>

- Kim JH, Lee BW, Schroeder FC, Jander G (2008) Identification of indole glucosinolate breakdown products with antifeedant effects on *Myzus persicae* (green peach aphid). *The Plant Journal* 54: 1015-1026
- Klarzynski O, Plesse B, Joubert JM, Yvin JC, Kopp M, Kloareg B, Fritig B (2000) Linear β -1,3 glucans are elicitors of defense responses in tobacco. *Plant Physiology* 124: 1027-1038
- Klessig DF, Durner J, Noad R, Navarre DA, Wendehenne D, Kumar D, Zhou JM, Shah J, Zhang S, Kachroo P, Trifa Y, Pontier D, Lam E, Silva H (2000) Nitric oxide and salicylic acid signaling in plant defense. *Proceedings of the National Academy of Sciences* 97: 8849-8855
- Kogan M, Ortman EF (1978) Antixenosis - a new term proposed to replace Painter's 'Non-preference' modality of resistance. *ESA Bulletin* 24: 175-176
- Koornneef A, Pieterse CMJ (2008) Cross talk in defense signaling. *Plant Physiology* 146: 839-844
- Kuc J (2006) What's old and what's new in concepts of induced systemic resistance in plants, and its applications. In: *Multigenic and Induced Resistance in Plants*. (eds.): Tuzun S, Bent E, Springer, New York, 9-20 pp.
- Lichtenthaler HK (1987) Chlorophylls and carotenoids: pigments of photosynthetic biomembranes. *Methods in Enzymology* 148: 331-382
- Lim PO, Woo HR, Nam HG (2003) Molecular genetics of leaf senescence in *Arabidopsis*. *Trends in Plant Science* 8: 272-278
- Louis J, Lorenc-Kukula K, Singh V, Reese J, Jander G, Shah J (2010) Antibiosis against the green peach aphid requires the *Arabidopsis thaliana* *Myzus persicae*-induced lipase1 gene. *The Plant Journal* 64: 800-811
- Lynn LB (1972) The chelating properties of seaweed extracts *Ascophyllum nodosum* vs. *Macrocystis periferia* on the mineral nutrition of sweet peppers, *Capsicum annuum*. M.S thesis, Clemson University, Clemson
- Marais MF, Joseleau JP (2001) A fucoidan fraction from *Ascophyllum nodosum*. *Carbohydrate Research* 336: 155-159
- McNeil SD, Nuccio ML, Hanson AD (1999) Betaines and related osmoprotectants. Targets for metabolic engineering of stress resistance. *Plant Physiology* 120: 945-949

- Meinke DW, Cherry JM, Dean C, Rounsley SD, Koornneef M (1998) *Arabidopsis thaliana*: A model plant for genome analysis. *Science* 282: 662-682
- Mejía-Teniente L, Torres-Pacheco I, González-Chavira MM, Rosalia V, Ocampo-Velazquez, Herrera-Ruiz G, Chapa-Oliver AM, Guevara-González RG (2010) Use of elicitors as an approach for sustainable agriculture. *African Journal of Biotechnology* 9: 9155-9162
- Mercier L, Lafitte C, Borderies G, Briand X, Tugayé MTE, Fournier J (2001) The algal polysaccharide carrageenans can act as an elicitor of plant defense. *New Phytologist* 149: 43-51
- Métraux JP (2002) Recent breakthroughs in the study of salicylic acid biosynthesis. *Trends in plant science* 7: 332-334
- Meyer GA (1998) Mechanisms promoting recovery from defoliation in goldenrod (*Solidago altissima*). *Botany* 76: 450-450
- Mik V, Szüčovaa L, Šmehilováb M, Zatloukal M, Doležala K, Jaroslav N, Grúza J, Galuszka P, Strnad M, Strnada M, Spíchala L (2011) N9-substituted derivatives of kinetin: effective anti-senescence agents. *Phytochemistry* 72: 821-831
- Mok DWS, Mok MC (1994) Cytokinins: chemistry activity and function. CRC Press, Boca Raton. 338 pp
- Moreno A, Bertolini E, Olmos A, Cambra M, Fereres M (2007) Estimation of vector propensity for Lettuce mosaic virus based on viral detection in single aphids. *Spanish Journal of Agricultural Research* 5: 376-384
- Mur LAJ, Kenton P, Lloyd AJ, Ougham H, Prats E (2008) The hypersensitive response; the centenary is upon us but how much do we know? *Journal of Experimental Botany* 59: 501-520
- Musetti L, Neal JJ (1997) Resistance to the pink potato aphid, *Macrosiphum euphorbiae*, in two accessions of *Lycopersicon hirsutum* f. *glabratum*. *Entomologia Experimentalis et Applicata* 84: 137-146
- Nabati DA, Schmidt RE, Parrish DJ (1994) Alleviation of salinity stress in Kentucky bluegrass by plant growth regulators and iron. *Crop Science* 34: 198-202
- Nabati DA (1991) Response of two grass species to plant growth regulators, fertilizer N, chelated Fe, salinity and water stress. Ph.D. dissertation. Virginia Polytechnic Institute and State University, Blacksburg

- Neal JJ, Tingey WM, Steffens JC (1990) Sucrose esters of carboxylic acids in glandular trichomes of *Solanum berthaultii* deter settling and probing by green peach aphid. *Journal of Chemical Ecology* 16: 487-497
- Nelson WR, Van Staden J (1985) 1-Aminocyclopropane-1-carboxylic acid in seaweed concentrate. *Botanica Marina* 28: 415-417
- Norrie J, Keathley JP (2006) Benefits of *Ascophyllum nodosum* marine plant extract applications to 'Thompson Seedless' grape production. X International symposium on plant bioregulators in fruit production, ISHS Acta Horticulturae 727: 243-248
- Oerke EC, Dehne HW (2004) Safeguarding production-losses in major crops and the role of crop protection. *Crop Protection* 23: 275-285
- Onkokesung N, Baldwin IT, Galis I (2010) The role of jasmonic acid and ethylene crosstalk in direct defense of *Nicotiana attenuata* plants against chewing herbivores. *Plant Signaling and Behavior* 5 1305-1307
- Ori N, Juarez MT, Jackson D, Yamaguchi J, Banowitz GM, Hake S (1999) Leaf senescence is delayed in tobacco plants expressing the maize homeobox gene knotted1 under the control of a senescence-activated promoter. *The Plant Cell* 11: 1073-1080
- Painter RH (1951) Insect resistance in crop plants. MacMillan Company, New York. 520 pp
- Panda N, Khush SG (1995) Host plant resistance to insects. CAB International, Wallingford. 431 pp
- Patier P, Yvin JC, Kloareg B, Liénart Y, Rochas C (1993) Seaweed liquid fertilizer from *Ascophyllum nodosum* contains elicitors of plant D-glycanases. *Journal of Applied Phycology* 5: 343-349
- Pegadaraju V, Louis J, Singh V, Reese JC, Bautor J, Feys BJ, Cook G, Parker JE, Shah J (2007) Phloem-based resistance to green peach aphid is controlled by Arabidopsis phytoalexin deficient4 without its signaling partner enhanced disease susceptibility1. *The Plant Journal* 52: 332-341
- Pegadaraju V, Knepper C, Reese J, Shah J (2005) Premature leaf Senescence modulated by the Arabidopsis phytoalexin deficient4 gene is associated with defense against the phloem-feeding green peach aphid. *Plant Physiology* 139: 1927-1934

- Peres LEP, Amar S, Kerbauy GB, Salatino A, Zaffar GR, Mercier H (1999) Effects of auxin, cytokinin and ethylene treatments on the endogenous ethylene and auxin to cytokinins ratio related to direct root tip conversion of *Catsetum fimbriatum* Lindl. (Orchidaceae) into buds. *Journal of Plant Physiology* 155: 551-555
- Pettitt FL, Smilowitz Z (1982) Green peach aphid feeding damage to potato in various plant growth stages. *Journal of Economic Entomology* 75: 431-435
- Pfaffl MW (2001) A new mathematical model for relative quantification in real-time RT-PCR. *Nucleic Acids Research* 29: e45
- Pickett JA, Wadhams LJ, Woodcock CM, Hardie J (1992) The chemical ecology of aphids. 37: 67-90
- Pieterse CMJ, Dicke M (2007) Plant interactions with microbes and insects: from molecular mechanisms to ecology. *Trends in plant science* 12: 564-569
- Pirone TP, Harris KF (1977) Nonpersistent transmission of plant viruses by aphids. *Annual Review of Phytopathology* 15: 55-73
- Pise NM, Sabale AB (2010) Effect of seaweed concentrates on the growth and biochemical constituents of *Trigonella Foenum-Graecum* L. *Journal of Phytology* 2: 50-56
- Ponsen MB (1970) The biological transmission of potato leafroll virus by *Myzus persicae*. *European Journal of Plant Pathology* 76: 234-239
- Racah B, Fereres A (2009) Plant virus transmission by insects. In *Encyclopedia of Life Sciences*. John Wiley and Sons, Ltd, Chichester. DOI: 10.1002/9780470015902.A0021525.a0000760.pub2
- Ramsey J, Wilson A, De Vos M, Sun Q, Tamborindéguy C, Winfield A, Malloch G, Smith D, Fenton B, Gray S, Jander G (2007) Genomic resources for *Myzus persicae*: EST sequencing, SNP identification, and microarray design. *BMC Genomics* 8: 423
- Rask L, Andréasson E, Ekblom B, Eriksson S, Pontoppidan B, Meijer J (2000) Myrosinase: gene family evolution and herbivore defense in Brassicaceae. *Plant Molecular Biology* 42: 93-114
- Rate DN, Cuenca JV, Bowman GR, Guttman DS, Greenberg JT (1999) The gain-of-function *Arabidopsis* *acd6* mutant reveals novel regulation and function of the salicylic acid signaling pathway in controlling cell death, defenses, and cell growth. *The Plant Cell* 11: 1695-1708

- Rathore SS, Chaudhary DR, Boricha GN, Ghosh A, Bhatt BP, Zodape ST, Patolia JS (2009) Effect of seaweed extract on the growth, yield and nutrient uptake of soybean (*Glycine max*) under rainfed conditions. South African Journal of Botany 75: 351-355
- Reitz SR, Trumble JT (1996) Cytokinin-containing seaweed extract does not reduce damage by an insect herbivore. HortScience 31: 102-105
- Rioux LE, Turgeon SL, Beaulieu M (2007) Characterization of polysaccharides extracted from brown seaweeds. Carbohydrate Polymers 69: 530-537
- Rothschild GHL (1969) Observations on the armyworm *Spodoptera mauritia acronyctoides* Gn. (Lep., Noctuidae) in Sarawak (Malaysian Borneo). Bulletin of Entomological Research 59: 143-160
- Ryals JA, Neuenschwander UH, Willits MG, Molina A, Steiner HY, Hunt MD (1996) Systemic acquired resistance. The Plant Cell 8: 1809-1819
- Ryan CA (2000) The systemin signaling pathway: differential activation of plant defensive genes. Biochimica et Biophysica Acta 1477: 112-121
- Sakakibara H (2006) Cytokinins: activity, biosynthesis, and translocation. Annual Review of Plant Biology 57: 431-449
- Sangha JS, Khan W, Ji X, Zhang J, Mills AAS, Critchley AT, Prithviraj B (2011) Carrageenans, sulphated polysaccharides of red seaweeds, differentially affect *Arabidopsis thaliana* resistance to *Trichoplusia ni* (Cabbage Looper). PLoS ONE 6: e26834
- Santner A, Calderon-Villalobos LIA, Estelle M (2009) Plant hormones are versatile chemical regulators of plant growth. Nature Chemical Biology 5: 301-307
- Satoh M, Kriedemann PE, Loveys BR (1977) Changes in photosynthetic activity and related processes following decapitation in mulberry trees. Physiologia Plantarum 41: 203-210
- Satoko Y (2003) Molecular regulation of leaf senescence. Current Opinion in Plant Biology 6: 79-84
- Schmidt RE (1990) Employment of biostimulants and iron for enhancement of turfgrass growth and development. Proceeding of 30th Virginia Turfgrass Conference, 9-14
- Senn TL (1987) Seaweed and plant growth. Clemson University, Clemson. 181 pp

- Singh R, Ellis PR, Pink DAC, Phelps K (1994) An investigation of the resistance to cabbage aphid in brassica species. *Annals of Applied Biology* 125: 457-465
- Smith CM (2005) Plant resistance to arthropods: molecular and conventional approaches. Springer, The Netherlands. 432 pp
- Somerville C, Koornneef M (2002) A fortunate choice: the history of *Arabidopsis* as a model plant. *Nature Reviews Genetics* 3: 883-889
- Stephenson WM (1966) The effect of hydrolysed seaweed on certain plant pests and diseases. *Proceedings of the International Seaweed Symposium* 5: 405-415
- Subramanian S, Sangha J, Gray B, Singh R, Hiltz D, Critchley A, Prithiviraj B (2011) Extracts of the marine brown macroalga, *Ascophyllum nodosum*, induce jasmonic acid dependent systemic resistance in *Arabidopsis thaliana* against *Pseudomonas syringae* pv. tomato DC3000 and *Sclerotinia sclerotiorum*. *European Journal of Plant Pathology* 131: 237-248
- Takei K, Yamaya T, Sakakibara H (2004a) *Arabidopsis CYP735A1* and *CYP735A2* encode cytokinin hydroxylases that catalyze the biosynthesis of trans-Zeatin. *Journal of Biological Chemistry* 279: 41866-41872
- Takei K, Ueda N, Aoki K, Kuromori T, Hirayama T, Shinozaki K, Yamaya T, Sakakibara H (2004b) *AtIPT3* is a key determinant of nitrate-dependent cytokinin biosynthesis in *Arabidopsis*. *Plant and Cell Physiology* 45: 1053-1062
- Temple W, Bomke A (1989) Effects of Kelp (*Macrocystis integrifolia* and *Eklonia maxima*) foliar applications on bean crop growth. *Plant and Soil* 117: 85-92
- The *Arabidopsis* Information Resource <http://www.arabidopsis.org> [last access April 2012)
- "The *Arabidopsis* Initiative". Analysis of the genome sequence of the flowering plant *Arabidopsis thaliana*. (2000) *Nature* 408: 796-815
- Thompson GA, Goggin FL (2006) Transcriptomics and functional genomics of plant defence induction by phloem-feeding insects. *Journal of Experimental Botany* 57: 755-766
- Towne G, Clenton O (1983) Cytokinins effect on protein and chlorophyll content of big bluestem leaves. *Journal of Range Management* 36: 75-77

- Tsuchiya T, Ohta H, Okawa K, Iwamatsu A, Shimada H, Masuda T, Takamiya K (1999) Cloning of chlorophyllase, the key enzyme in chlorophyll degradation: finding of a lipase motif and the induction by methyl jasmonate. *Proceedings of the National Academy of Sciences* 96: 15362-15367
- Ugarte RA, Sharp G (2001) A new approach to seaweed management in Eastern Canada: the case of *Ascophyllum nodosum*. *Cahiers de Biologie Marine* 42: 63-70
- Ussuf KK, Laxmi NH, Mitra R (2001) Proteinase inhibitors: plant-derived genes of insecticidal protein for developing insect-resistant transgenic plants. *Current Science* 80: 847-853
- Van Poecke RMP (2007) Arabidopsis-insect interactions. *The Arabidopsis book*. The American Society of Plant Biologists, DOI: 10.1199/tab.0107
- Vera J, Castro J, Gonzalez A, Moenne A (2011) Seaweed polysaccharides and derived oligosaccharides stimulate defense responses and protection against pathogens in plants. *Marine Drugs* 9: 2514-2525
- Vonk CR (1979) Origin of cytokinins transported in the phloem. *Physiologia Plantarum* 46: 235-240
- Walling LL (2000) The myriad plant responses to herbivores. *Journal of Plant Growth Regulation* 19: 195-216
- Walling LL (2008) Avoiding effective defenses: strategies employed by phloem-feeding insects. *Plant Physiology* 146: 859-866
- Wang C, Gao F, Wu J, Dai J, Wei C, Li Y (2010) Arabidopsis putative deacetylase *AtSRT2* regulates basal defense by suppressing *PAD4*, *EDS5* and *SID2* expression. *Plant and Cell Physiology* 51: 1291-1299
- Wildermuth MC, Dewdney J, Wu G, Ausubel FM (2001) Isochorismate synthase is required to synthesize salicylic acid for plant defence. *Nature* 414: 562-565
- Will T and Bel AJEV (2006) Physical and chemical interactions between aphids and plants. *Journal of Experimental Botany* 57: 729-737
- Yan J (1993) Influence of plant growth regulators on turfgrass polar lipid composition, tolerance to drought and salinity stresses, and nutrient efficiency. PhD dissertation. Virginia Polytechnic Institute and State University, Blacksburg
- Zarate SI, Kempema LA, Walling LL (2007) Silverleaf whitefly induces salicylic acid defenses and suppresses effectual jasmonic acid defenses. *Plant Physiology* 143: 866-875

Zettler FW, Smyly MO, Evans IR (1969) The repellency of mature citrus leaves to probing aphids. *Annals of the Entomological Society of America* 62: 399-402

Zodape ST, Mukherjee S, Reddy MP, Chaudhary DR (2009) Effect of *Kappaphycus alvarezii* (Doty) Doty ex silva. extract on grain quality, yield and some yield components of wheat (*Triticum aestivum* L.). *International Journal of Plant Production* 3: 97-101

**APPENDIX A: MINERAL COMPOSITION OF LONG ASHTON SOLUTION
(LANS) AND INORGANIC CONTROL**

Compound	LANS 0.1x	Modified LANS (inorganic control) 0.1x
	Final conc'n (ppm=mg/L)	Final conc'n (ppm=mg/L)
KNO ₃	K = 15.6 N = 5.6	K = 15.6 N = 5.6
Ca(NO ₃) ₂ 4H ₂ O	Ca = 16.6 N = 11.2	Ca = 3.3 N = 2.2
MgSO ₄ 7H ₂ O	Mg = 3.6 S = 4.8	Mg = 3.6 S = 4.8
NaH ₂ PO ₄ H ₂ O	P = 4.1 Na = 3.1	P = 4.1 Na = 3.1
Fe-citrate H ₂ O	Fe = 0.28	Fe = 0.28
MnSO ₄ H ₂ O	Mn = 0.05	Mn = 0.05
CuSO ₄ 5H ₂ O	Cu = 0.003	Cu = 0.003
ZnSO ₄ 7H ₂ O	Zn = 0.013	Zn = 0.013
H ₃ BO ₃	B = 0.032	B = 0.032
Na ₂ MoO ₄ 2H ₂ O	Mo = 0.005	Mo = 0.005
NaCl	Cl = 0.36 Na = 0.23	Cl = 0.36 Na = 0.23
CoSO ₄ 7H ₂ O	Co = 0.0012	Co = 0.0012
KCl	-	K = 65 Cl = 60
KOH	-	K = 65

Source: Acadian Seaplants Limited, Dartmouth, Canada