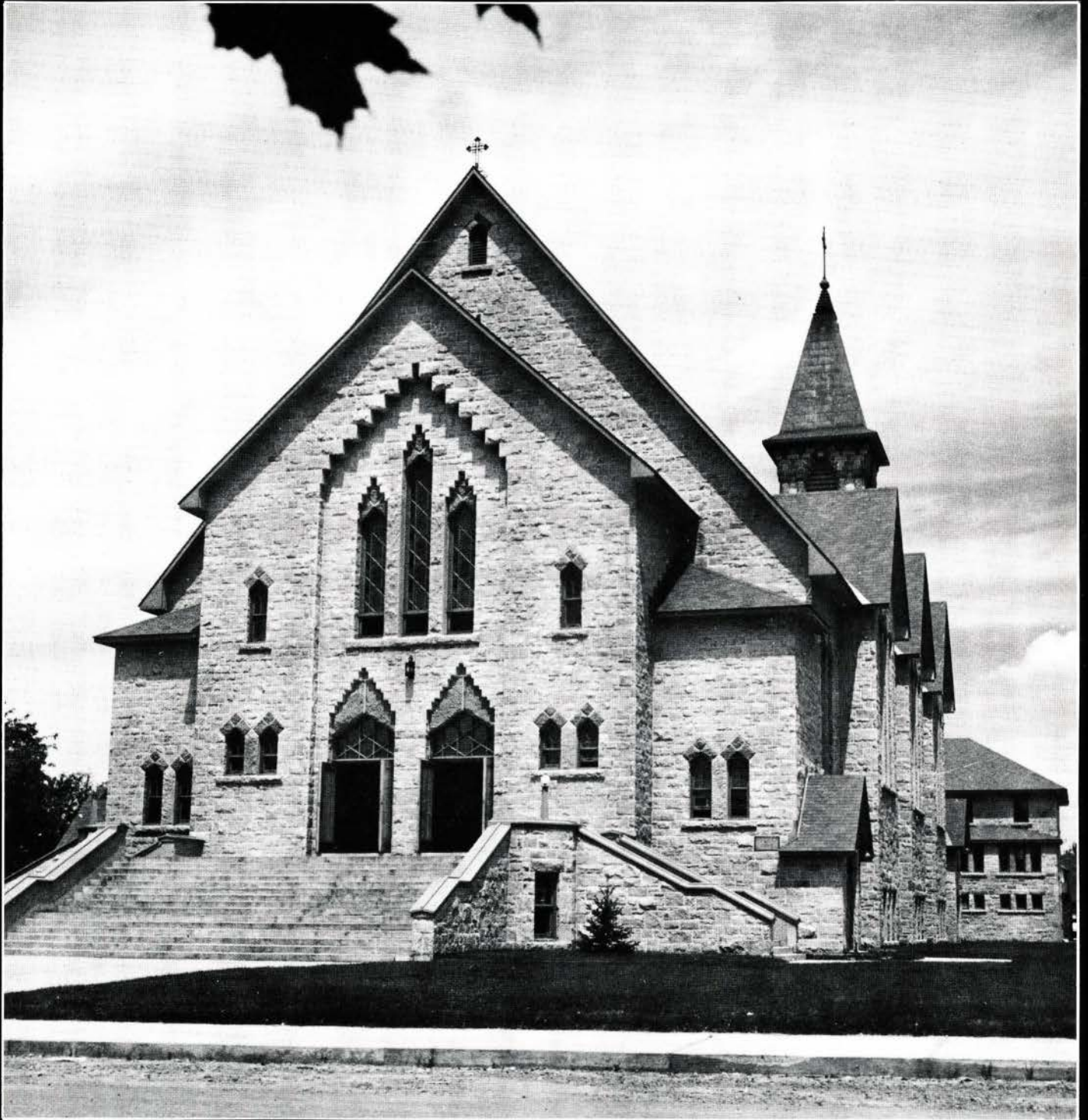


SOCIETY FOR THE STUDY OF ARCHITECTURE IN CANADA

BULLETIN

SOCIÉTÉ POUR L'ÉTUDE DE L'ARCHITECTURE AU CANADA



Society for the Study of Architecture in Canada

President

Douglas Franklin
30 Renfrew Avenue
Ottawa, Ontario, K1S 1Z5

office (613) 237-1867
res. 236-5395

Past President

Christina Cameron
Parks Canada
Les Terrasses de la Chaudière
Ottawa, Ontario, K1A 1G2

office (819) 994-1808
res. 827-1172

Vice-President

Stuart Lazear
11215 - 73 Avenue
Edmonton, Alberta, T6G 0C7

office (403) 431-2345
res. 437-2711

Treasurer

Dana Johnson
1470 Edgecliffe Avenue
Ottawa, Ontario, K1Z 1Z5

office (613) 994-2866
res. 729-8783

Secretary

Neil Einarson
754- Mulvey Avenue
Winnipeg, Manitoba, R3M 1H7

office (204) 945-4390
res. 284-8783

Bulletin Editor

Don Lovell
Architecture Division
DPW&H, G.N.W.T., Box 1320
Yellowknife, Northwest Territories, X1A 2L9

office (403) 873-7818
res. 873-2138

Members at Large (East to West):

Charles Henley
8 Battery Road
St. John's, Newfoundland, A1A 1A4
Richard Mackinnon
89 Cottage Road
Sydney, Nova Scotia, B1P 2C9
Reg Porter
162 Dorchester Street
Charlottetown, P.E.I. C1A 1E3
Allen Doiron
Provincial Archives
P.O. Box 6000
Fredericton, N.B., E3B 5H1
Howard Shubert
Canadian Centre for Architecture
2nd Floor 1440 Ste. Catherine St. W.
Montréal, Quebec, H3G 1R8

(709) 726-5683

Mark Fram

221 Russell Hill Roads No. 302
Toronto, Ontario, M4V 2T3

office (514) 871-1418
res. 485-1542

Jim Johnston

185 Waverly Street
Winnipeg, Manitoba, R3M 3K4

office (204) 983-3088
res. 452-0377

Frank Korvemaker

Saskatchewan Culture and Recreation
1942 Hamilton Street
Regina, Saskatchewan, S4P 3V7

office (306) 787-5875
res. 586-1405

Diana Thomas Kordan

Historic Sites Alberta Culture
8820 - 112 Street
Edmonton, Alberta, T6G 2P8

office (403) 427-2022
res. 431-2344

Edward Mills

701 - 1133 Melville Street
Vancouver, B.C. V6E 4E5

office (604) 667-6317

ISSN No. 0228-0744

Indexed in the Canadian Periodicals Index

Printing and typesetting: Quadra Graphics Ltd., Nanaimo, B.C.

Cover: Granby, Saint-Benoît, 1949-50. Arch.: Edgar Courchesne et Dom Claude Côté. Inventaire de biens culturels de Québec

Letter from the President

The publication of the **Index of the Canadian Architect and Builder, 1888-1908** by the Society for the Study of Architecture in Canada in 1987 is directly linked to the purpose and objectives of our organization. The exhaustive research and compilation by Patricia Johnson and Pual Chenier was a labour of love. Moreover, the authors offered their manuscript for publication without remuneration. In turn, the SSAC has published the **Index**, primarily as a service to its members and the community of researchers, and the many constituencies that will find it useful. The price of the **Index** was simply based on cost recovery.

The huge response from members to the pre-publication sale indicates the need for the SSAC to continue to serve its members through the coordination of such publications. This might seem self-evident, but it is not. There is still a sizeable inventory of back-issues of *SSAC Bulletins* and individually-published *Proceedings* available. During the coming year I will endeavour to "market" this inventory to all members. It simply represents some of the most extensive research into the field of Canadian architecture during the past fifteen years!

With best wishes,
Douglas Franklin
President

NEW EXECUTIVE SECRETARY

The Society has a new Executive Secretary, Christine Derouin, who will handle the on-going administrative work of the Society. This includes processing memberships, maintaining the membership list, supporting the work of the Treasurer and President, handling the sale of Society publications, and several other duties.

We welcome Christine and will count on her skills in maintaining the business side of our Society. She can be reached through the SSAC box number or by telephone at (613) 523-8725.

NORTHERN ARCHITECTURE

The December issue of the *Bulletin* will consist of papers dealing with architecture of Canada's north. Topics range from anthropological studies of early Inuit dwellings to contemporary architectural practice north of 60° parallel. Those interested in submitting articles should send their manuscripts including photos directly to the Editor.

BULLETIN Volume 12, Number 2 PROCEEDINGS PART VIII

L'Architecture Reliquieuse Contemporaine des Cantons De L'Est : Caractères et Rayonnement
by *Claude Bergeron* (Presented S.S.A.C.
Conference 1985) 3

FEATURES

Witness to the Passing of Victorian Architecture -
the R.A.I.C. Journal, 1924-1935
by *Alexander F. Cross* 9

Report From Saskatchewan
by *Frank Korvemaker* 15

Membership fees are payable on 1 January of each year at the following rates: Student \$10.00, Individual/Family \$20.00, Organization, Corporation, Institution \$30.00. Make cheque payable to SSAC. Further information on membership dues can be obtained from the Membership Secretary, Box 2302, Station 'D', Ottawa, Ontario, K1P 5W5. Opinions expressed herein are those of their authors and not necessarily those of the Society. The *Bulletin* is not responsible for unsolicited material.